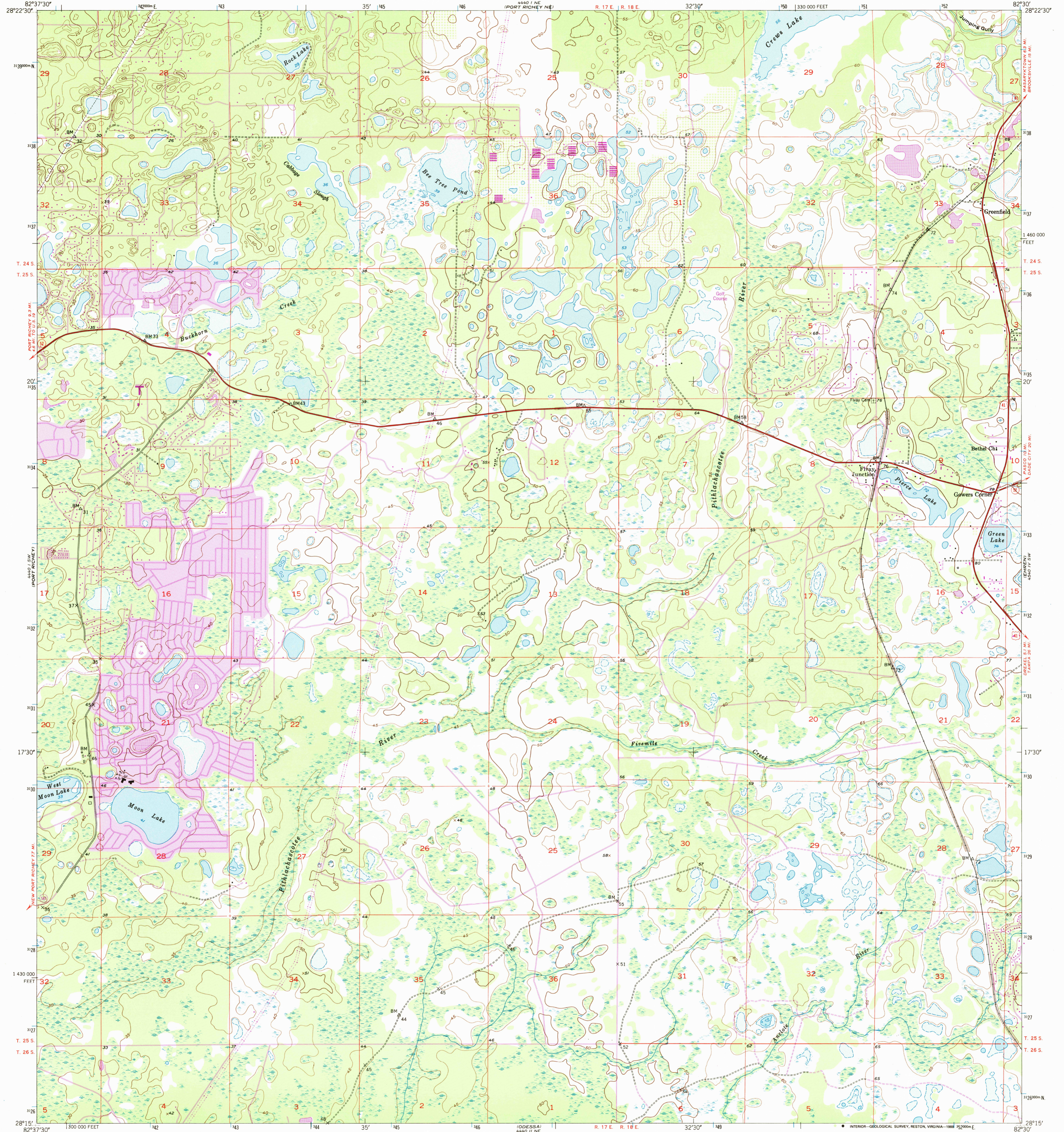


4440 11W  
1450 11W

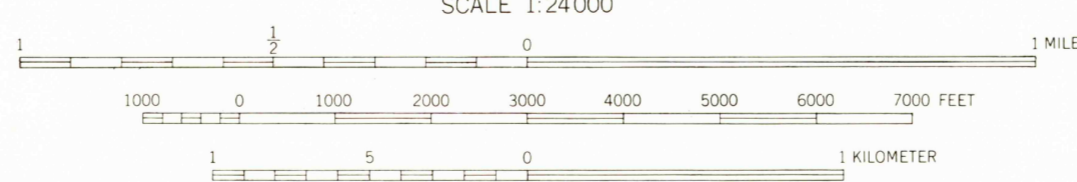
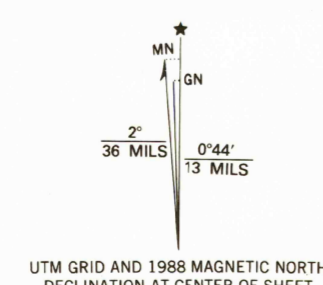
UNITED STATES  
DEPARTMENT OF THE INTERIOR  
GEOLOGICAL SURVEY

FIVAY JUNCTION QUADRANGLE  
FLORIDA-PASCO CO.  
7.5 MINUTE SERIES (TOPOGRAPHIC)

4440 11W  
1450 11W



Mapped, edited, and published by the Geological Survey  
Control by USGS and USC&GS  
Topography from aerial photographs by Kelsh plotter  
and by plane-table surveys 1954. Aerial photographs taken 1951  
Polyconic projection. 1927 North American datum  
10,000-foot grid based on Florida coordinate system,  
west zone  
1000-meter Universal Transverse Mercator grid ticks,  
zone 17, shown in blue  
To place on the predicted North American Datum 1983,  
move the projection lines 28 meters south and  
16 meters west as shown by dashed corner ticks  
Purple tint indicates extension of urban areas



CONTOUR INTERVAL 5 FEET  
NATIONAL GEODETIC VERTICAL DATUM OF 1929

THIS MAP COMPLIES WITH NATIONAL MAP ACCURACY STANDARDS  
FOR SALE BY U.S. GEOLOGICAL SURVEY  
DENVER, COLORADO 80225, OR RESTON, VIRGINIA 22092  
A FOLDER DESCRIBING TOPOGRAPHIC MAPS AND SYMBOLS IS AVAILABLE ON REQUEST



QUADRANGLE LOCATION

ROAD CLASSIFICATION

Heavy-duty	4 LANE 16 LANE	Light-duty
Medium-duty	4 LANE 16 LANE	Unimproved dirt
U.S. Route		Slate Route

USGS NMD HISTORICAL MAP  
DEC 14 1988  
REC'D FILE COPY

FIVAY JUNCTION, FLA.  
28082 C5 TF-024  
1954  
PHOTOREVISED 1988  
DMA 4440 1 SE-SERIES 9847

Revision shown in purple compiled from aerial photographs  
taken 1984 and other sources. This information not  
field checked. Map edited 1988