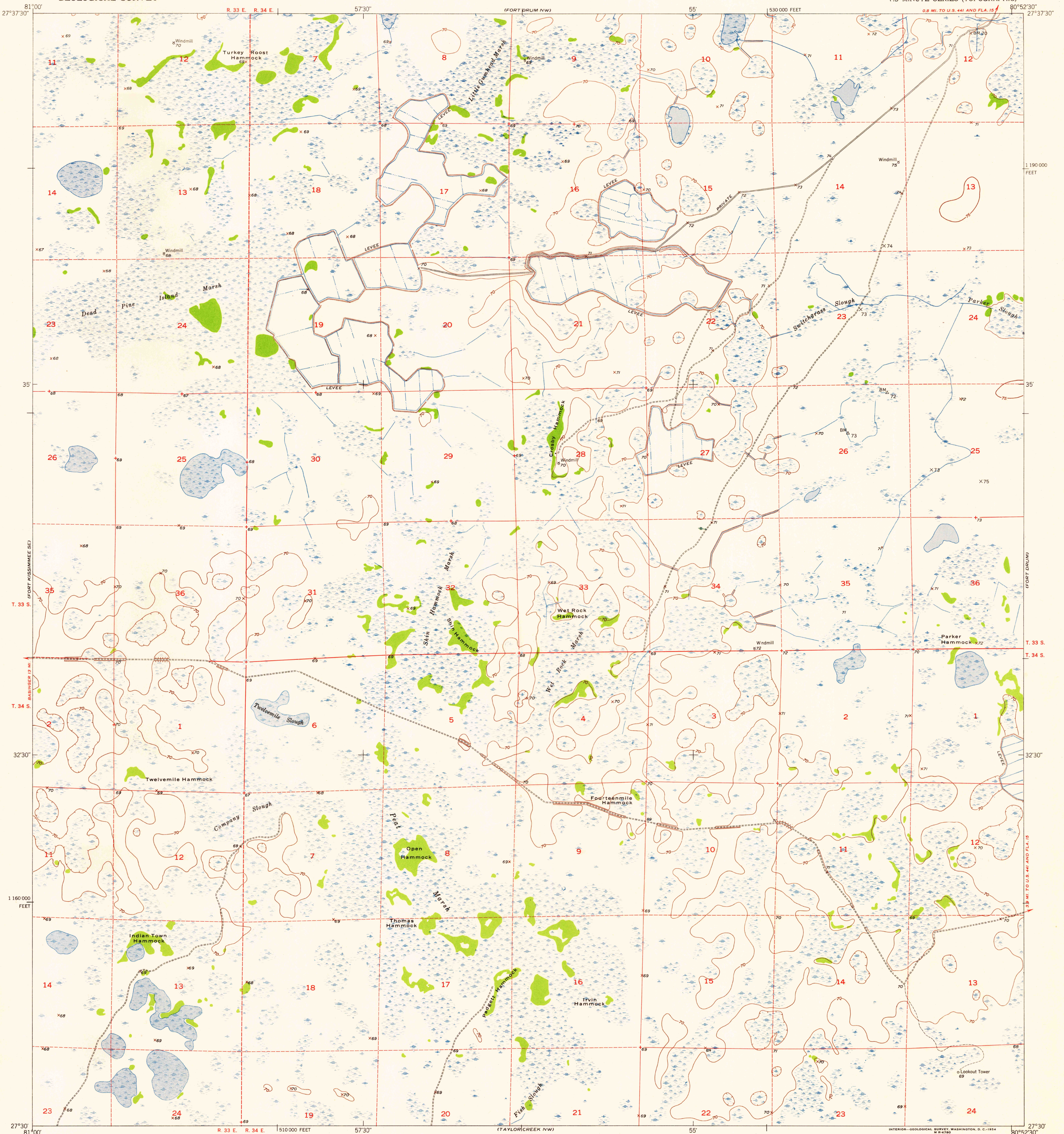


UNITED STATES  
DEPARTMENT OF THE INTERIOR  
GEOLOGICAL SURVEY

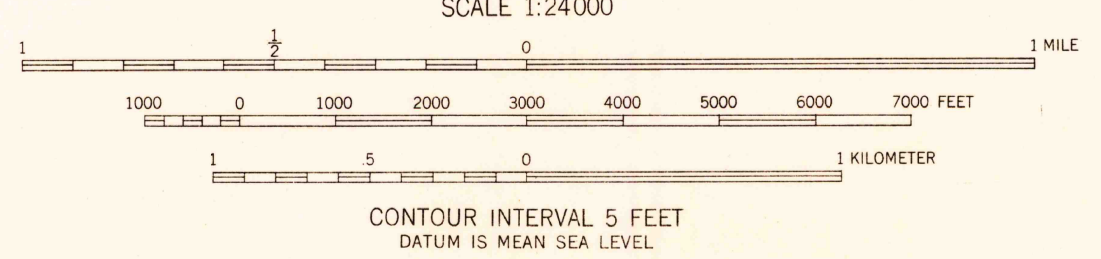
U.S.G.S.  
FILE COPY  
TOPOGRAPHIC DIVISION

FORT DRUM SW QUADRANGLE  
FLORIDA-OKEECHOBEE CO.  
7.5 MINUTE SERIES (TOPOGRAPHIC)



Mapped, edited, and published by the Geological Survey  
Control by USGS, USC&GS, and USCE  
Culture and drainage in part compiled by U. S. Corps of  
Engineers from aerial photographs taken 1950. Topography  
by plane-table surveys 1953  
Polyconic projection, 1927 North American datum  
10,000-foot grid based on Florida coordinate system,  
east zone  
Dashed land lines indicate approximate locations

TRUE NORTH  
MAGNETIC NORTH  
APPROXIMATE MEAN  
DECLINATION, 1953



ROAD CLASSIFICATION  
Heavy-duty 4 LANE 6 LANE Light-duty  
Medium-duty 4 LANE 6 LANE Unimproved dirt  
U. S. Route State Route

U.S.G.S.  
FILE COPY  
TOPOGRAPHIC DIVISION

FORT DRUM SW, FLA.  
N2730-W8052 5/7.5

1953

THIS MAP COMPLIES WITH NATIONAL MAP ACCURACY STANDARDS  
FOR SALE BY U. S. GEOLOGICAL SURVEY, WASHINGTON 25, D. C.  
A FOLDER DESCRIBING TOPOGRAPHIC MAPS AND SYMBOLS IS AVAILABLE ON REQUEST

NOV 16 1954  
2120