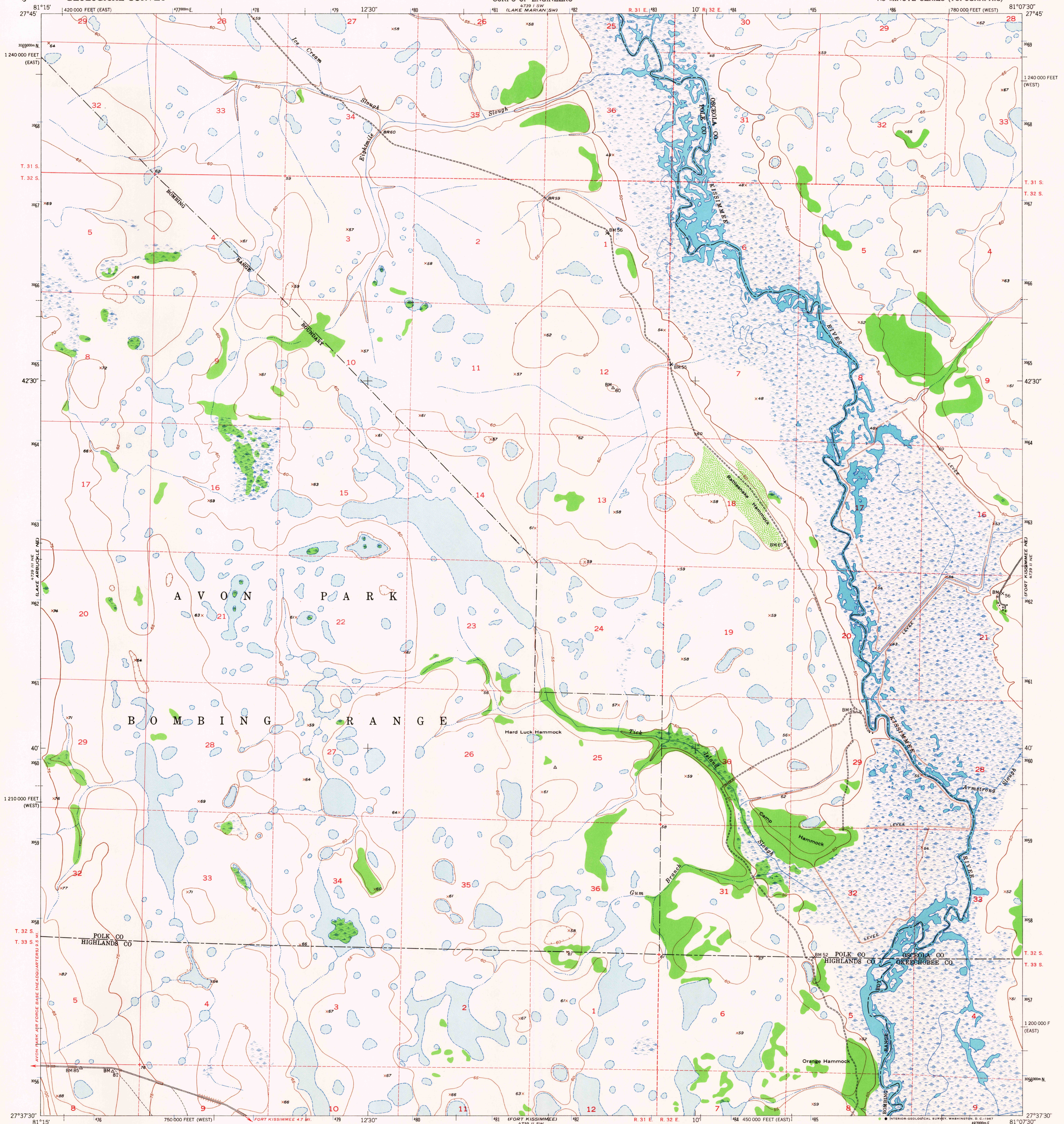


UNITED STATES
DEPARTMENT OF THE INTERIOR
GEOLOGICAL SURVEY

UNITED STATES
DEPARTMENT OF THE ARMY
CORPS OF ENGINEERS

FORT KISSIMMEE NW QUADRANGLE
FLORIDA
7.5 MINUTE SERIES (TOPOGRAPHIC)



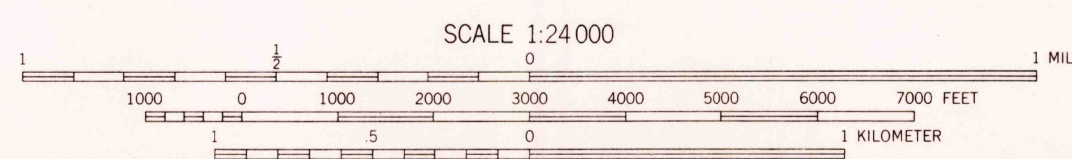
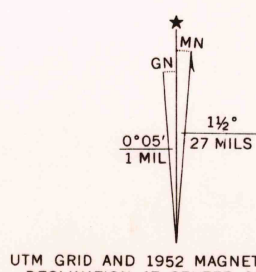
Mapped by U. S. Corps of Engineers
Edited and published by the Geological Survey
Control by USC&GS and USCE

Culture and drainage in part compiled from aerial photographs
taken 1950. Topography by plane-table surveys 1950-1951
Field check by the Geological Survey 1952

Polyconic projection. 1927 North American datum
10,000-foot grids based on Florida coordinate system,
east and west zones

Dashed land lines indicate approximate locations
Certain land lines are omitted in T. 31 S.-R. 31 E. and
T. 32 S.-R. 32 E. because of insufficient data

1000-meter Universal Transverse Mercator grid ticks,
zone 17, shown in blue



THIS MAP COMPLIES WITH NATIONAL MAP ACCURACY STANDARDS
FOR SALE BY U. S. GEOLOGICAL SURVEY, WASHINGTON, D. C. 20242
A FOLDER DESCRIBING TOPOGRAPHIC MAPS AND SYMBOLS IS AVAILABLE ON REQUEST



U.S.G.S.
FOLDER COPY
TOPOGRAPHIC DIVISION

ROAD CLASSIFICATION
Heavy-duty ——— 4 LANE IS LANE Light-duty ———
Medium-duty ——— 4 LANE IS LANE Unimproved dirt ———
U. S. Route ——— State Route ———

FORT KISSIMMEE NW, FLA.
N2737.5-W8107.5/7.5

1952

AMS 4739 II NW-SERIES V847

2125
MAR 9 1957