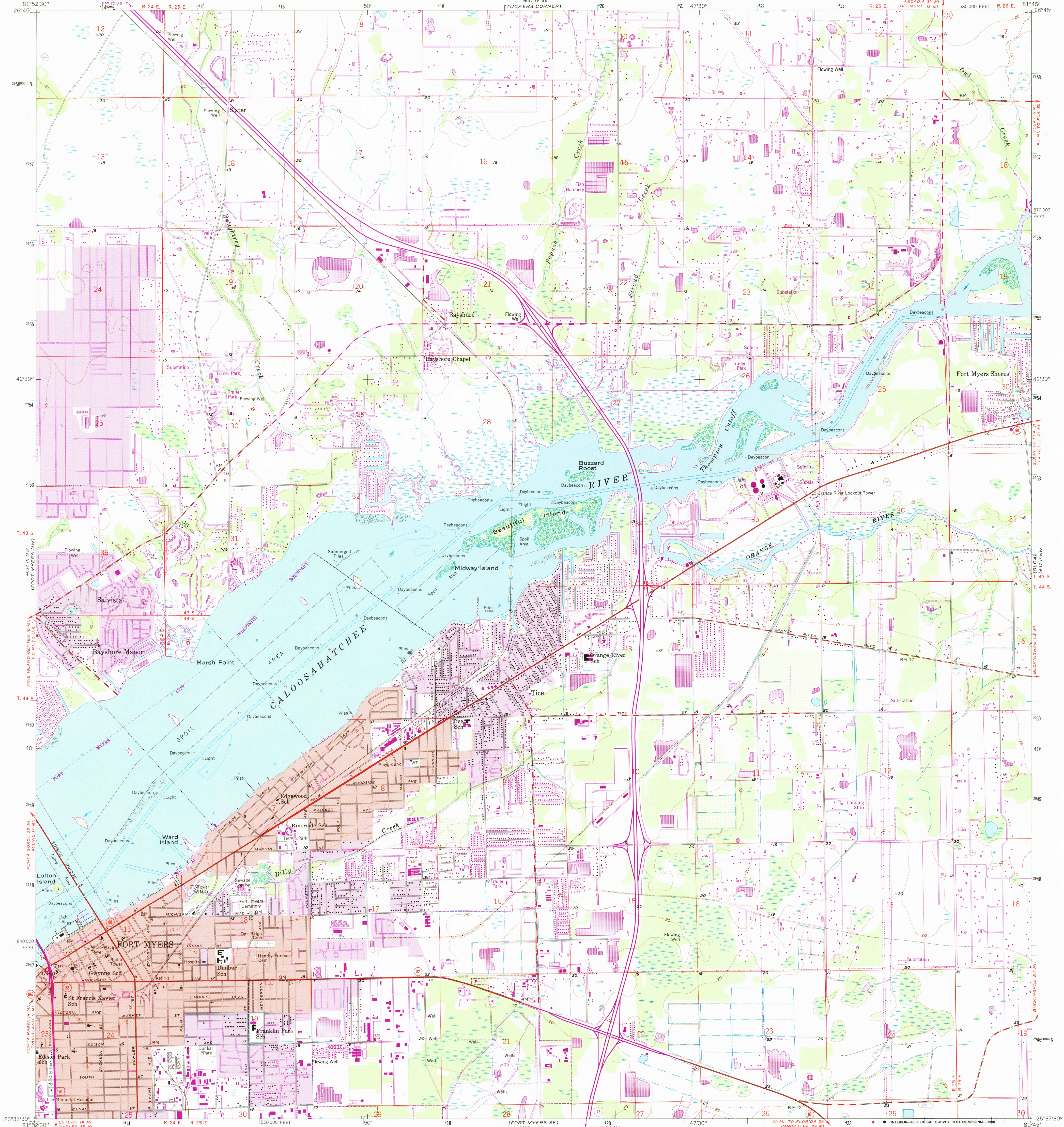


UNITED STATES
DEPARTMENT OF THE INTERIOR
GEOLOGICAL SURVEY

FORT MYERS QUADRANGLE
FLORIDA—LEE CO.
7.5 MINUTE SERIES (TOPOGRAPHIC)



Maped, edited, and published by the Geological Survey

Control by USGS and USC&GS

Culture and drainage in part compiled from aerial photographs taken 1951-1952. Topography by planetable surveys 1958
Hydrography compiled from USC&GS charts 473 and 1289 (1956) This information is not intended for navigational purposes

Polyconic projection. 1927 North American datum
10,000-foot grid based on Florida coordinate system, west zone
1000-meter Universal Transverse Mercator grid ticks, zone 17, shown in blue

To place on the predicted North American Datum 1983
move the projection lines 35 meters south and
18 meters west as shown by dashed corner ticks

Red tint indicates areas in which only
landmark buildings are shown

29° 44' N
44 MILES
022° 7' W
7 MILES
UTM GRID AND 1987 MAGNETIC NORTH
DECLINATION AT CENTER OF SHEET

1 1000 0 1000 2000 3000 4000 5000 6000 7000 FEET
1 5 0 5 10 KILOMETER

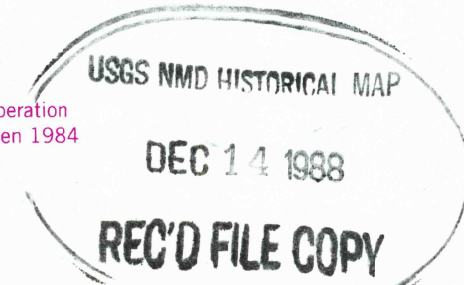
CONTOUR INTERVAL 5 FEET
NATIONAL GEODETIC VERTICAL DATUM OF 1929
DEPTH CURVES AND SOUNDINGS IN FEET—DATUM IS MEAN LOWER LOW WATER
THE RELATIONSHIP BETWEEN THE TWO DATUMS IS VARIABLE
SHORELINE SHOWN REPRESENTS THE APPROXIMATE LINE OF MEAN HIGH WATER
THE MEAN RANGE OF TIDE IS APPROXIMATELY 1 FOOT

THIS MAP COMPLIES WITH NATIONAL MAP ACCURACY STANDARDS
FOR SALE BY U. S. GEOLOGICAL SURVEY
DENVER, COLORADO 80225 OR RESTON, VIRGINIA 22092
A FOLDER DESCRIBING TOPOGRAPHIC MAPS AND SYMBOLS IS AVAILABLE ON REQUEST

ROAD CLASSIFICATION
Primary highway, hard surface
Secondary highway, hard surface
Light-duty road, hard or improved surface
Unimproved road
Interstate Route
U. S. Route
State Route



QUADRANGLE LOCATION



FORT MYERS, FLA.
26081-F7-TF-024

1958

PHOTOREVISED 1987
DMA 4637 II NE—SERIES V847

Revisions shown in purple and woodland compiled in cooperation
with State of Florida agencies from aerial photographs taken 1984
and other sources. This information not field checked
Map edited 1987
Purple tint indicates extension of urban areas