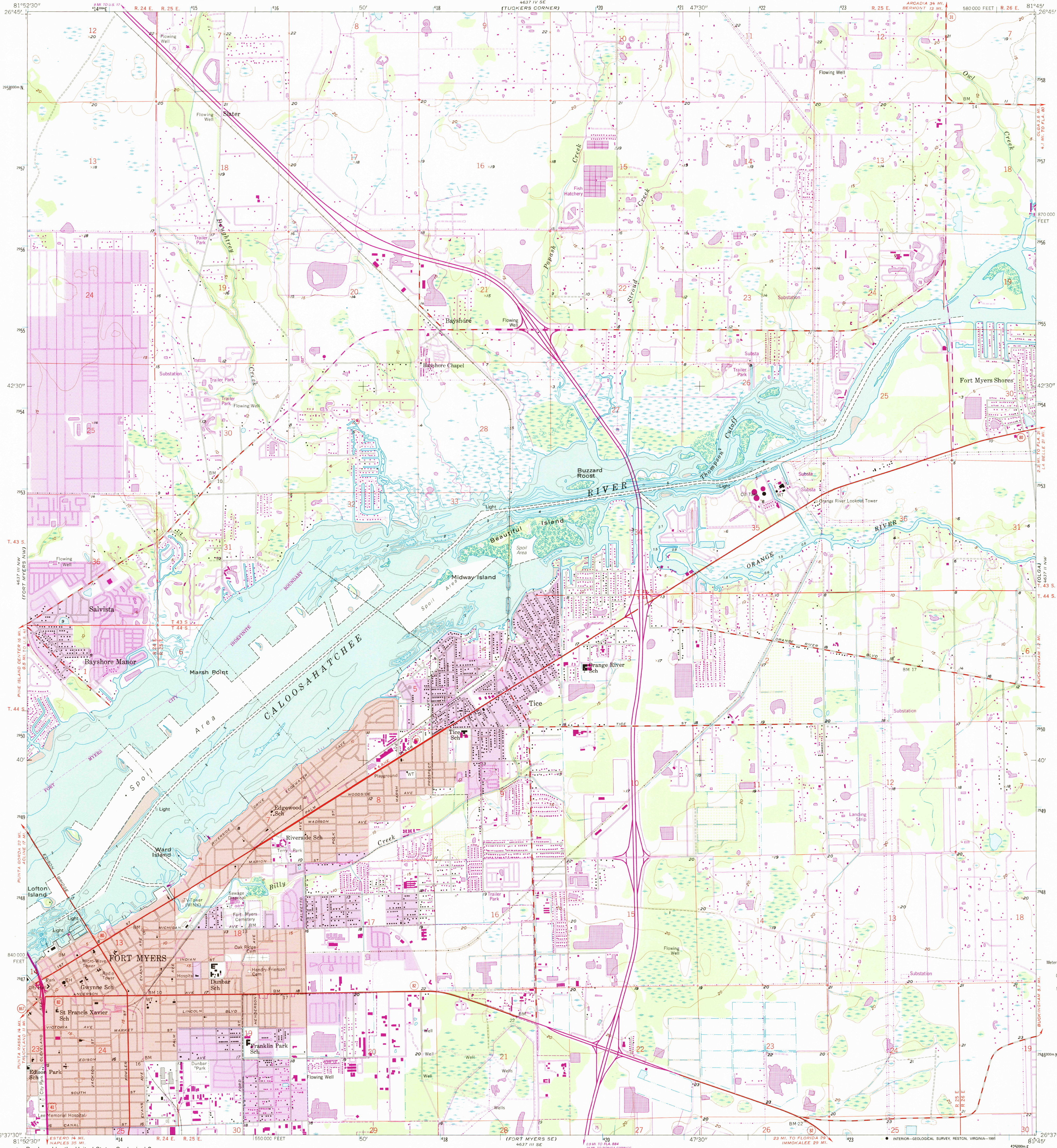


UNITED STATES
DEPARTMENT OF THE INTERIOR
GEOLOGICAL SURVEY

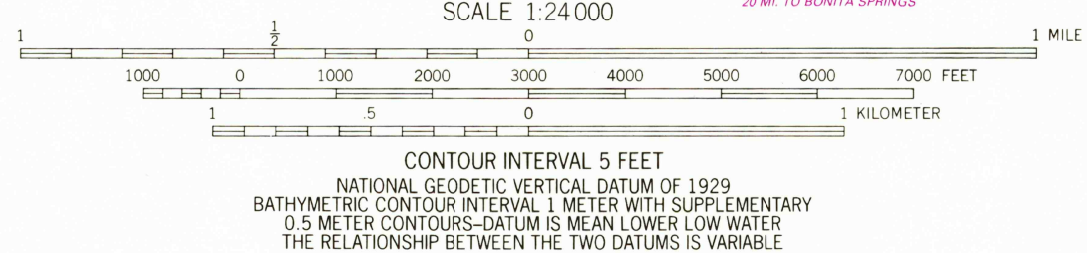
FORT MYERS QUADRANGLE
FLORIDA-LEE CO.
7.5 MINUTE SERIES (TOPOGRAPHIC-BATHYMETRIC)



Produced by the United States Geological Survey
and the National Ocean Service
Control by USGS and NOS/NOAA
Culture and drainage in part compiled from aerial photographs
taken 1951-1952. Topography from planetable surveys 1958
Bathymetry compiled by the National Ocean Service from
tide-coordinated hydrographic surveys. This information is
not intended for navigational purposes.
Mean lower low water (dotted) line and mean high water (heavy solid)
line compiled by NOS from tide-coordinated aerial photographs.
Apparent shoreline (outer edge of vegetation) shown by light solid line.
Polyconic projection. 1927 North American Datum.
10,000-foot grid ticks based on Florida coordinate system, west zone
17, shown in blue.
To place on the predicted North American Datum 1983,
move the projection lines 35 meters south and
18 meters west as shown by dashed corner ticks.
Red tint indicates areas in which only landmark buildings are shown.
Revisions shown in purple and woodland compiled in cooperation
with State of Florida agencies from aerial photographs taken 1984
and other sources. This information not field checked.
Map edited 1987.
Purple tint indicates extension of urban areas.

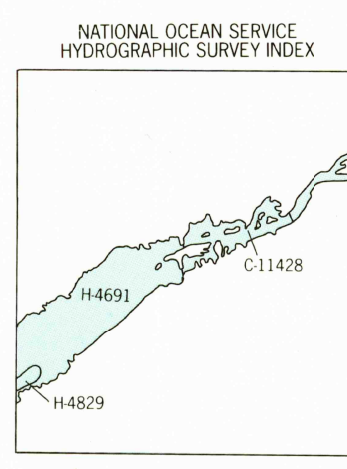


UTM GRID AND 1987 MAGNETIC NORTH
DECLINATION AT CENTER OF SHEET



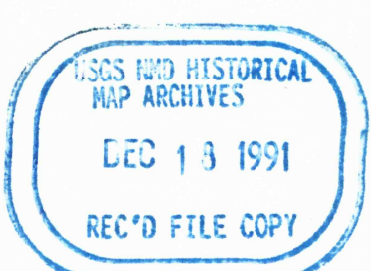
CONTOUR INTERVAL 5 FEET
NATIONAL GEODETIC VERTICAL DATUM OF 1929
BATHYMETRIC SURVEY DATA COMPILED WITH INTERNATIONAL HYDROGRAPHIC
ORGANIZATION (IHO) SPECIAL PUBLICATION 44 ACCURACY STANDARDS
AND/OR STANDARDS USED AT THE DATE OF THE SURVEY
THE RELATIONSHIP BETWEEN THE TWO DATUMS IS VARIABLE

BASE MAP COMPILES WITH NATIONAL MAP ACCURACY STANDARDS
BATHYMETRIC SURVEY DATA COMPILES WITH INTERNATIONAL HYDROGRAPHIC
ORGANIZATION (IHO) SPECIAL PUBLICATION 44 ACCURACY STANDARDS
AND/OR STANDARDS USED AT THE DATE OF THE SURVEY
FOR SALE BY U. S. GEOLOGICAL SURVEY
DENVER, COLORADO 80225, OR RESTON, VIRGINIA 22092
A FOLDER DESCRIBING TOPOGRAPHIC MAPS AND SYMBOLS IS AVAILABLE ON REQUEST



HYDROGRAPHIC SURVEY INFORMATION			
SURVEY NUMBER	SURVEY DATE	SURVEY SCALE	SURVEY LINE SPACING (METER FEET)
H-4691	1927	1:10,000	02.08
H-4629	1929	1:10,000	02.08
NOS CHART 11428 SEPTEMBER 1981 1:40,000			

ROAD CLASSIFICATION
Primary highway, hard surface
Secondary highway, hard surface
Unimproved road
Interstate Route
U. S. Route
State Route



FORT MYERS, FLA.
26081-F7-TB-024
1958
PHOTOREVISED 1987
BATHYMETRY ADDED 1991
DMA 4637 II NE - SERIES 1947