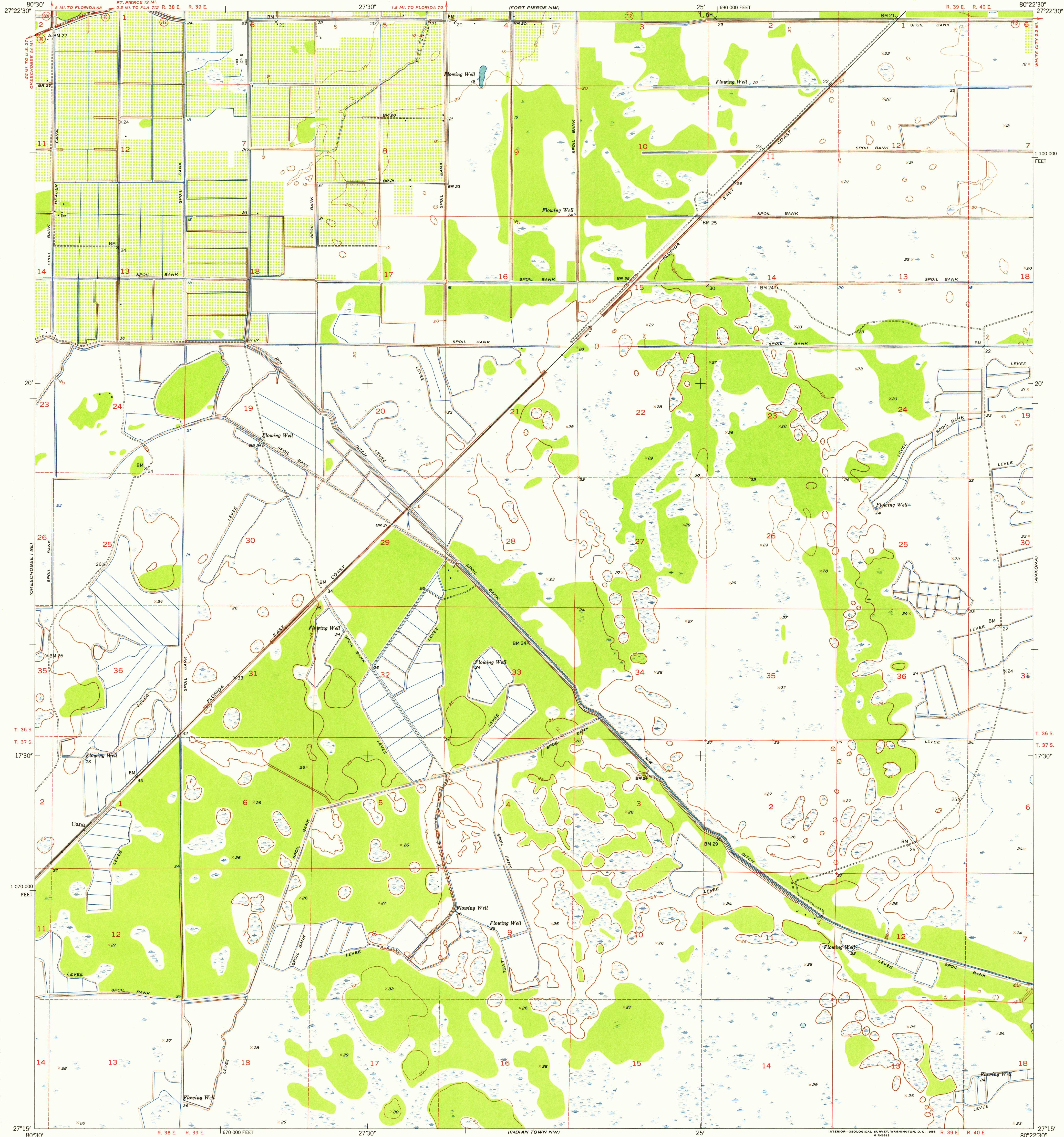


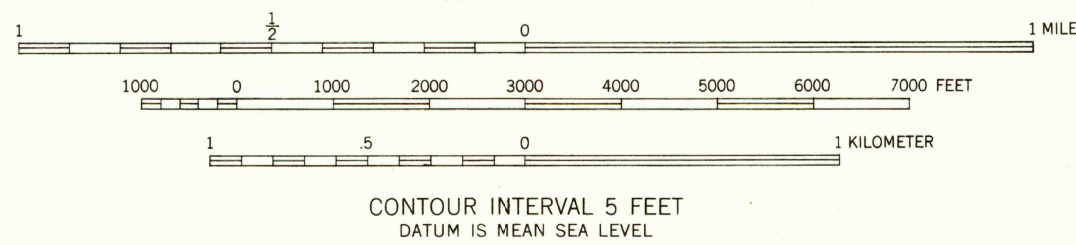
UNITED STATES  
DEPARTMENT OF THE INTERIOR  
GEOLOGICAL SURVEY

FORT PIERCE SW QUADRANGLE  
FLORIDA-ST. LUCIE CO.  
7.5 MINUTE SERIES (TOPOGRAPHIC)



Mapped, edited, and published by the Geological Survey  
Control by USGS and USC&GS  
Culture and drainage in part compiled by U.S. Corps of  
Engineers and Geological Survey from aerial photographs taken 1951  
Topography by plane-table surveys 1952-1953  
Polyconic projection. 1927 North American datum  
10,000-foot grid based on Florida coordinate system,  
east zone  
Dashed land lines indicate approximate locations

TRUE NORTH  
MAGNETIC NORTH  
APPROXIMATE MEAN  
DECLINATION, 1953



USGS  
Historical File  
Topographic Division



ROAD CLASSIFICATION  
Heavy-duty 4 LANE 16 LANE Light-duty  
Medium-duty 4 LANE 16 LANE Unimproved dirt  
U. S. Route State Route

FORT PIERCE SW, FLA.  
N2715-W8022.5/7.5

1953

JUL 6 1955

THIS MAP COMPLIES WITH NATIONAL MAP ACCURACY STANDARDS  
FOR SALE BY U. S. GEOLOGICAL SURVEY, WASHINGTON 25, D. C.  
A FOLDER DESCRIBING TOPOGRAPHIC MAPS AND SYMBOLS IS AVAILABLE ON REQUEST