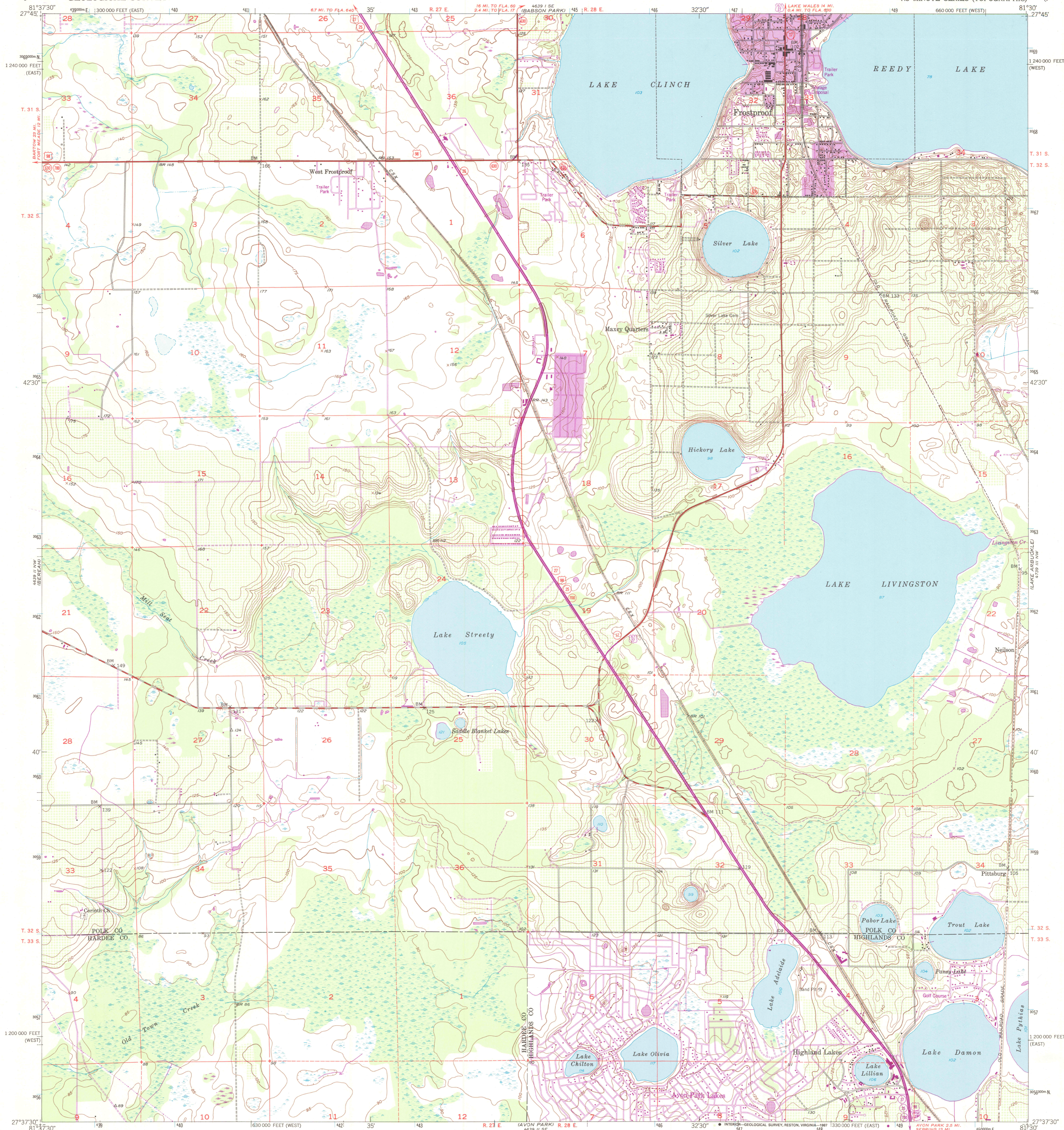


UNITED STATES
DEPARTMENT OF THE INTERIOR
GEOLOGICAL SURVEY

FROSTPROOF QUADRANGLE
FLORIDA
7.5 MINUTE SERIES (TOPOGRAPHIC)



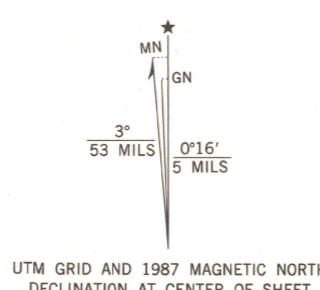
Mapped, edited, and published by the Geological Survey

Control by USGS, USC&GS, and USCE
Culture and drainage in part compiled by U. S. Corps of Engineers from aerial photographs taken 1950
Topography by Kesh plotter and plane-table surveys by Corps of Engineers 1950-51 and Geological Survey 1953

Polyconic projection. 1927 North American Datum
10,000-foot grid ticks based on Florida coordinate system, west and east zones
1000-meter Universal Transverse Mercator grid ticks, zone 17, shown in blue

To place on the predicted North American Datum 1983 move the projection lines 30 meters south and 19 meters west as shown by dashed corner ticks
Dashed land lines indicate approximate locations

Revisions shown in purple and woodland compiled in cooperation with State of Florida agencies from aerial photographs taken 1994 and other sources. This information not field checked
Map edited 1987
Purple tint indicates extension of urban areas

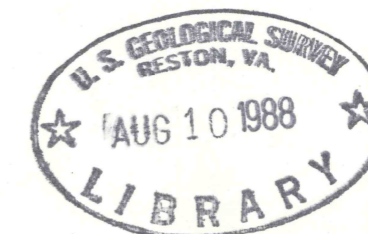


CONTOUR INTERVAL 5 FEET
NATIONAL GEODETIC VERTICAL DATUM OF 1929

ROAD CLASSIFICATION	
Heavy-duty	Light-duty
Medium-duty	Unimproved dirt
U. S. Route	State Route



QUADRANGLE LOCATION



FROSTPROOF, FLA.
27081-F5-TF-024

1963
PHOTOREVISED 1987
DMA 4639 II NE-SERIES V847

THIS MAP COMPLIES WITH NATIONAL MAP ACCURACY STANDARDS
FOR SALE BY U. S. GEOLOGICAL SURVEY
DENVER, COLORADO 80225 OR RESTON, VIRGINIA 22092
A FOLDER DESCRIBING TOPOGRAPHIC MAPS AND SYMBOLS IS AVAILABLE ON REQUEST