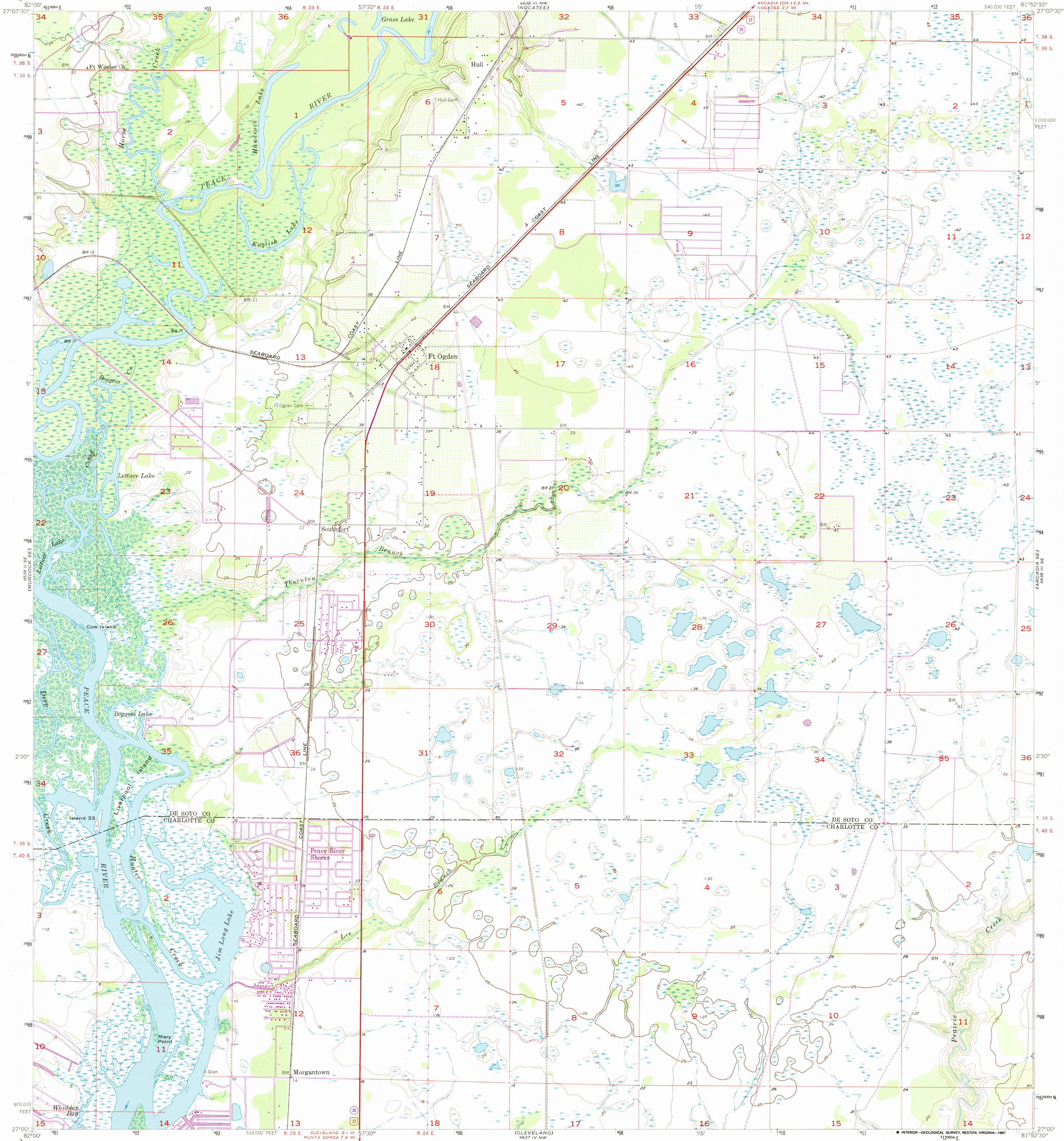


UNITED STATES
DEPARTMENT OF THE INTERIOR
GEOLOGICAL SURVEY

FT. OGDEN QUADRANGLE
FLORIDA
7.5 MINUTE SERIES (TOPOGRAPHIC)

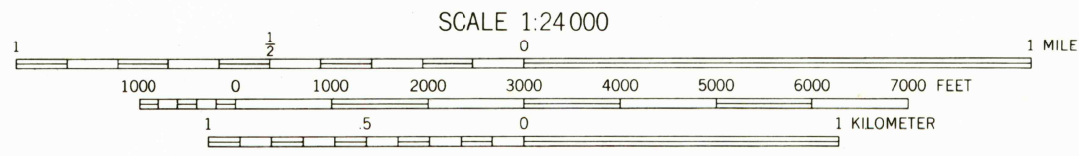
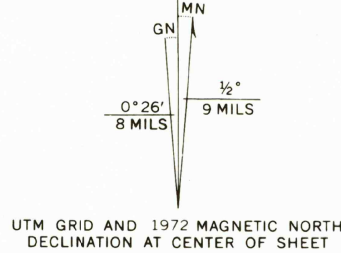


Mapped, edited, and published by the Geological Survey
Control by USGS and USC&GS

Culture and drainage in part compiled from aerial photographs
taken 1951-1952. Topography by planetable surveys 1956

Polyconic projection. 1927 North American datum
10,000-foot grid based on Florida coordinate system, west zone
1000-meter Universal Transverse Mercator grid ticks,
zone 17, shown in blue

Revisions shown in purple compiled from aerial photographs
taken 1972. This information not field checked



CONTOUR INTERVAL 5 FEET
NATIONAL GEODETIC VERTICAL DATUM OF 1929

THIS MAP COMPLIES WITH NATIONAL MAP ACCURACY STANDARDS
FOR SALE BY U.S. GEOLOGICAL SURVEY, DENVER, COLORADO 80225
OR RESTON, VIRGINIA 22092
A FOLDER DESCRIBING TOPOGRAPHIC MAPS AND SYMBOLS IS AVAILABLE ON REQUEST



QUADRANGLE LOCATION

To place on the predicted North American Datum 1983,
move the projection lines 33 meters south and
17 meters west as shown by dashed corner ticks

ROAD CLASSIFICATION
Heavy-duty ——— Light-duty ———
Unimproved dirt ———
U. S. Route ——— State Route ———



FT. OGDEN, FLA.
27081-A8-TF-024

1956
PHOTOREVISED 1972
DMA 4638 III SW-SERIES V847