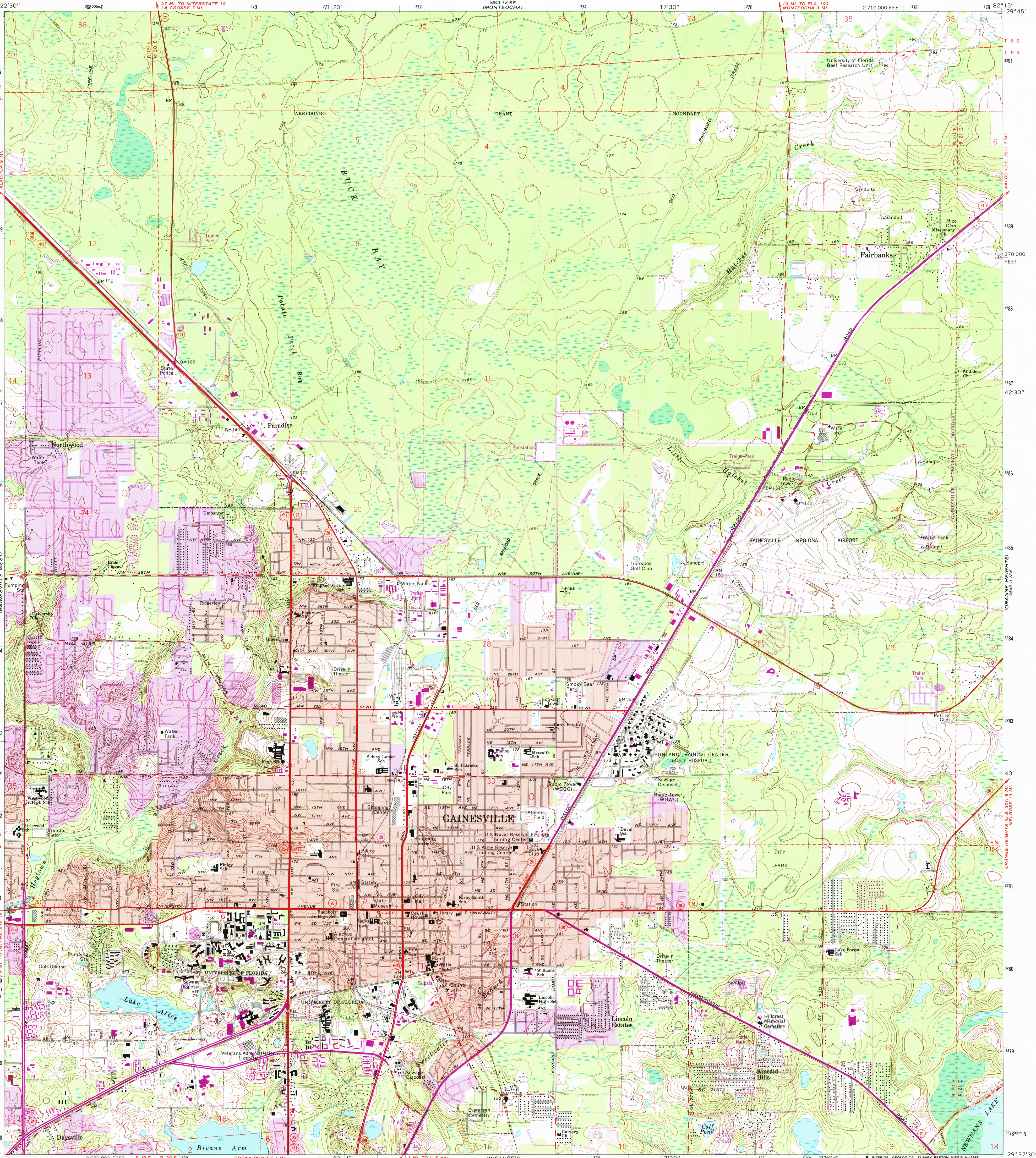


UNITED STATES  
DEPARTMENT OF THE INTERIOR  
GEOLOGICAL SURVEY

GAINESVILLE EAST QUADRANGLE  
FLORIDA—ALACHUA CO.  
7.5 MINUTE SERIES (TOPOGRAPHIC)



Mapped, edited, and published by the Geological Survey  
Control by USGS, NOS/NOAA, USCE, and Florida Geodetic Survey  
Topography by photogrammetric methods from aerial photographs  
taken 1964. Field checked 1966  
Polyconic projection. 10,000-foot grid based on Florida coordinate  
system, north zone. 1000-meter Universal Transverse Mercator  
grid ticks, zone 17, shown in blue. 1927 North American  
Datum. To place on the predicted North American Datum  
1983 move the projection lines 23 meters south and 15  
meters west as shown by dashed corner ticks  
Fine red dashed lines indicate selected fence and field lines where  
generally visible on aerial photographs. This information is unchecked  
Red tint indicates areas in which only landmark buildings are shown  
Dotted land lines established by private survey

UTM GRID AND 1988 MAGNETIC NORTH  
DECLINATION AT CENTER OF SHEET

SCALE 1:240,000  
CONTOUR INTERVAL 5 FEET  
NATIONAL GEODETIC VERTICAL DATUM OF 1929

THIS MAP COMPLIES WITH NATIONAL MAP ACCURACY STANDARDS  
FOR SALE BY U. S. GEOLOGICAL SURVEY, DENVER, COLORADO 80225, OR RESTON, VIRGINIA 22092  
A FOLDER DESCRIBING TOPOGRAPHIC MAPS AND SYMBOLS IS AVAILABLE ON REQUEST

Revisions shown in purple compiled from aerial photographs  
taken 1984 and other sources. This information not  
field checked. Map edited 1988  
Purple tint indicates extension of urban areas

ROAD CLASSIFICATION  
Heavy-duty ——— Light-duty ———  
Medium-duty ——— Unimproved dirt ———  
U. S. Route ——— State Route ———

GAINESVILLE EAST, FLA.  
29082-F3-TF-024  
1966  
PHOTOREVISED 1988  
DMA 4543 III NE-SERIES V847