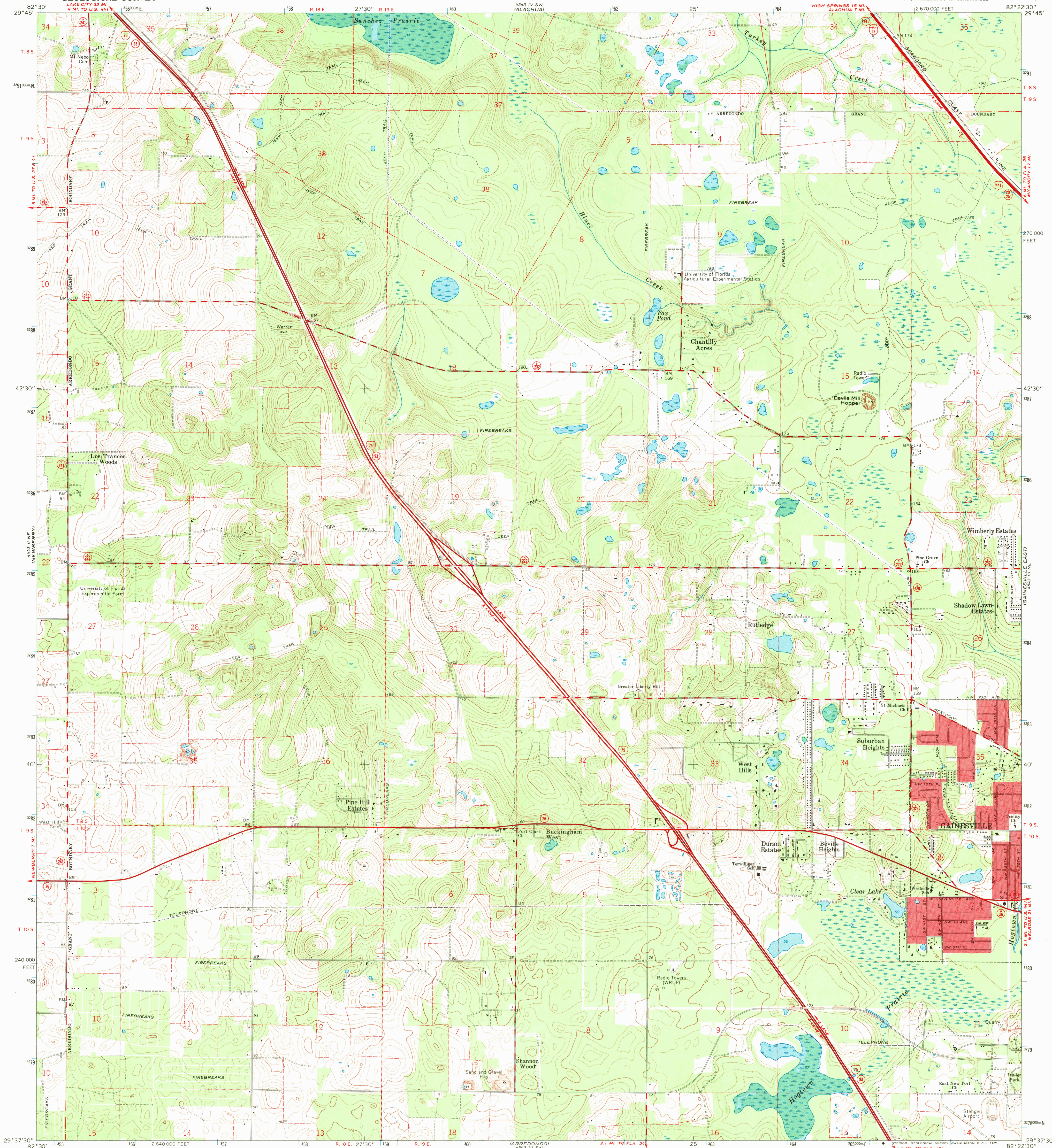
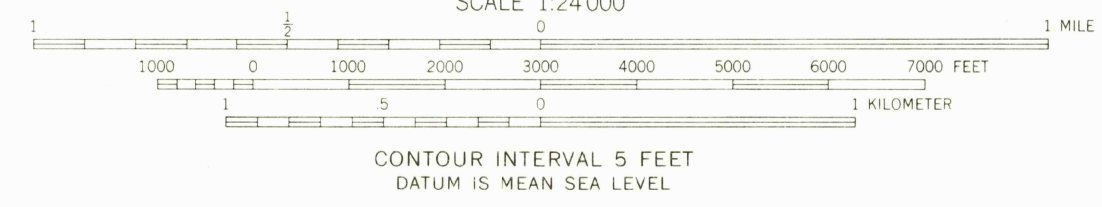
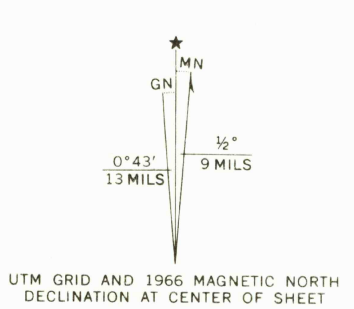


UNITED STATES
DEPARTMENT OF THE INTERIOR
GEOLOGICAL SURVEY

GAINESVILLE WEST QUADRANGLE
FLORIDA—ALACHUA CO.
7.5 MINUTE SERIES (TOPOGRAPHIC)
NW/4 ARREDONDO 15' QUADRANGLE



Mapped, edited, and published by the Geological Survey
Control by USGS, USC&GS, and Florida Geodetic Survey
Topography by photogrammetric methods from aerial photographs taken 1964. Field checked 1966
Polyconic projection, 1927 North American datum
10,000-foot grid based on Florida coordinate system, north zone
1000-meter Universal Transverse Mercator grid ticks, zone 17, shown in blue
Fine red dashed lines indicate selected fence and field lines where generally visible on aerial photographs. This information is unchecked
Red tint indicates areas in which only landmark buildings are shown
Dotted land lines established by private survey



CONTOUR INTERVAL 5 FEET
DATUM IS MEAN SEA LEVEL



ROAD CLASSIFICATION

Heavy-duty	Light duty
Medium-duty	Unimproved dirt
Interstate Route	U.S. Route
	State Route

THIS MAP COMPLIES WITH NATIONAL MAP ACCURACY STANDARDS
FOR SALE BY U. S. GEOLOGICAL SURVEY, WASHINGTON, D. C. 20242
A FOLDER DESCRIBING TOPOGRAPHIC MAPS AND SYMBOLS IS AVAILABLE ON REQUEST

USGS
HISTORICAL FILE
TOPOGRAPHIC DIVISION

GAINESVILLE WEST, FLA.
NW/4 ARREDONDO 15' QUADRANGLE
N2937.5—W8222.5/7.5
1966
AMS 4543 III NW—SERIES V847