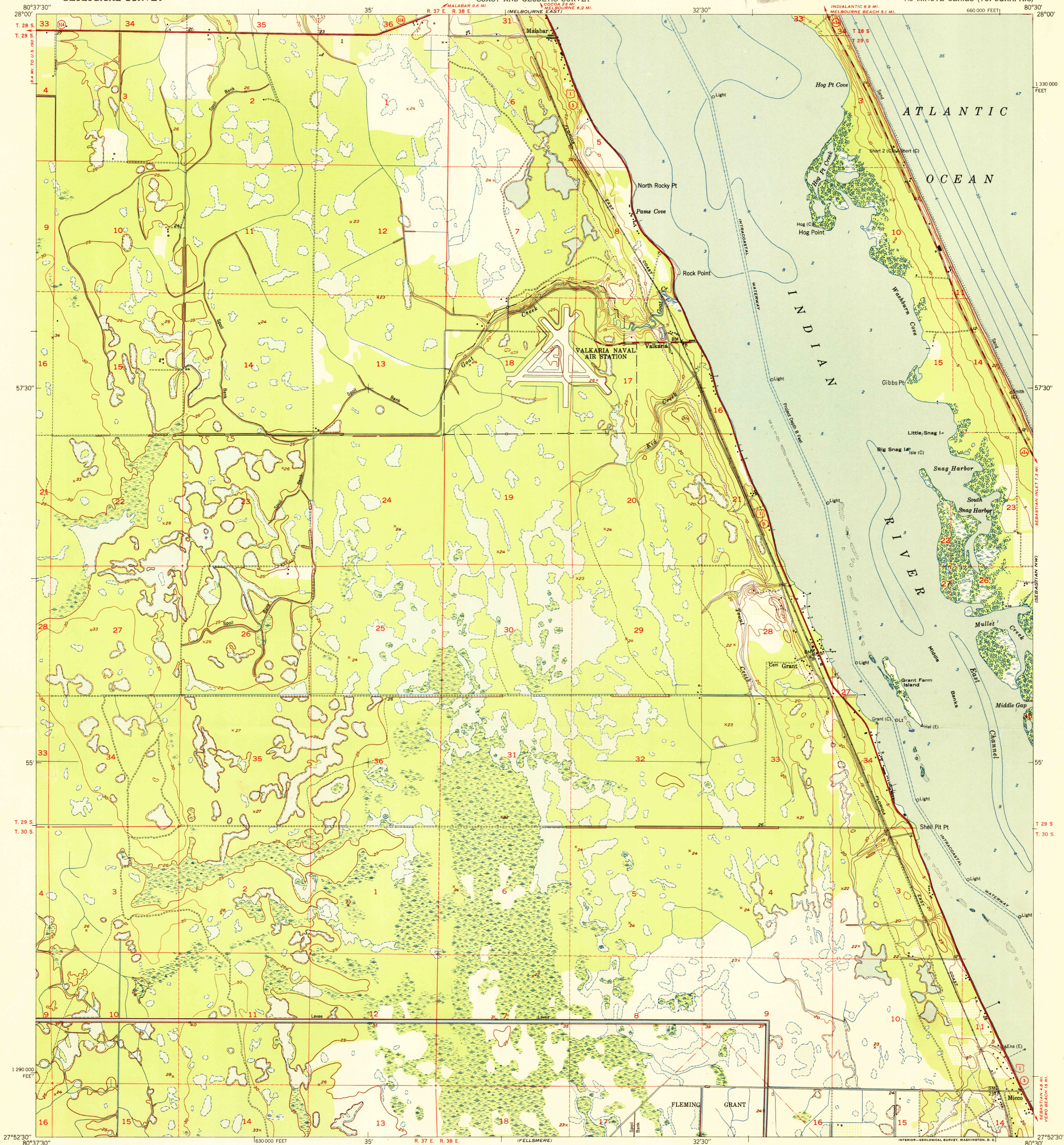


FILE COPY



Mapped by the U. S. Coast & Geodetic Survey
Edited and published by the Geological Survey

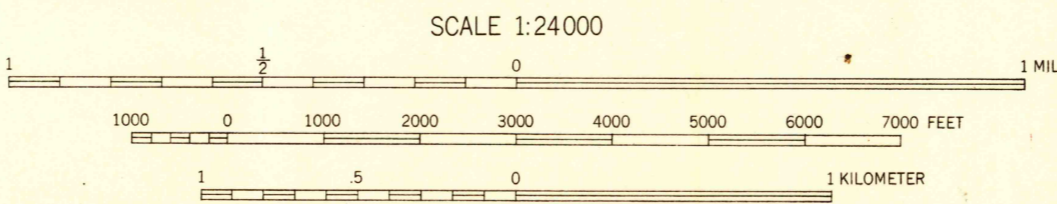
Control by USC&GS (C) and USED (E)

Culture and drainage in part compiled from
aerial photographs taken 1947
Topography by plane-table methods. Field check 1949
Hydrography from charts surveyed 1878 to 1930

Polycyclic projection. 1927 North American datum
10,000-foot grid based on Florida coordinate system,
east zone

Dashed land lines indicate approximate location
Unchecked elevations are shown in brown

TRUE NORTH
MAGNETIC NORTH
APPROXIMATE MEAN
DECLINATION, 1949



CONTOUR INTERVAL 5 FEET
DATUM IS MEAN SEA LEVEL
DEPTH CURVES AND SOUNDINGS IN FEET-DATUM IS MEAN LOW WATER
SHORELINE SHOWN REPRESENTS THE APPROXIMATE LINE OF MEAN HIGH WATER
THE AVERAGE RANGE OF TIDE IS APPROXIMATELY 3 FEET ALONG THE OCEAN
NO PERIODIC TIDES IN THE INDIAN RIVER

THIS MAP COMPLIES WITH NATIONAL MAP ACCURACY STANDARDS
FOR SALE BY U. S. GEOLOGICAL SURVEY, WASHINGTON 25, D. C.
A FOLDER DESCRIBING TOPOGRAPHIC MAPS AND SYMBOLS IS AVAILABLE ON REQUEST

ROAD CLASSIFICATION
Heavy-duty... 4 LANE 16 LANE Light-duty...
Medium-duty... 4 LANE 16 LANE Unimproved dirt...
U. S. Route State Route

FILE COPY

USGS
Historical File
Topographic Division

GRANT, FLA.
N2752-5-W8030/7.5

EDITION OF 1951

3195