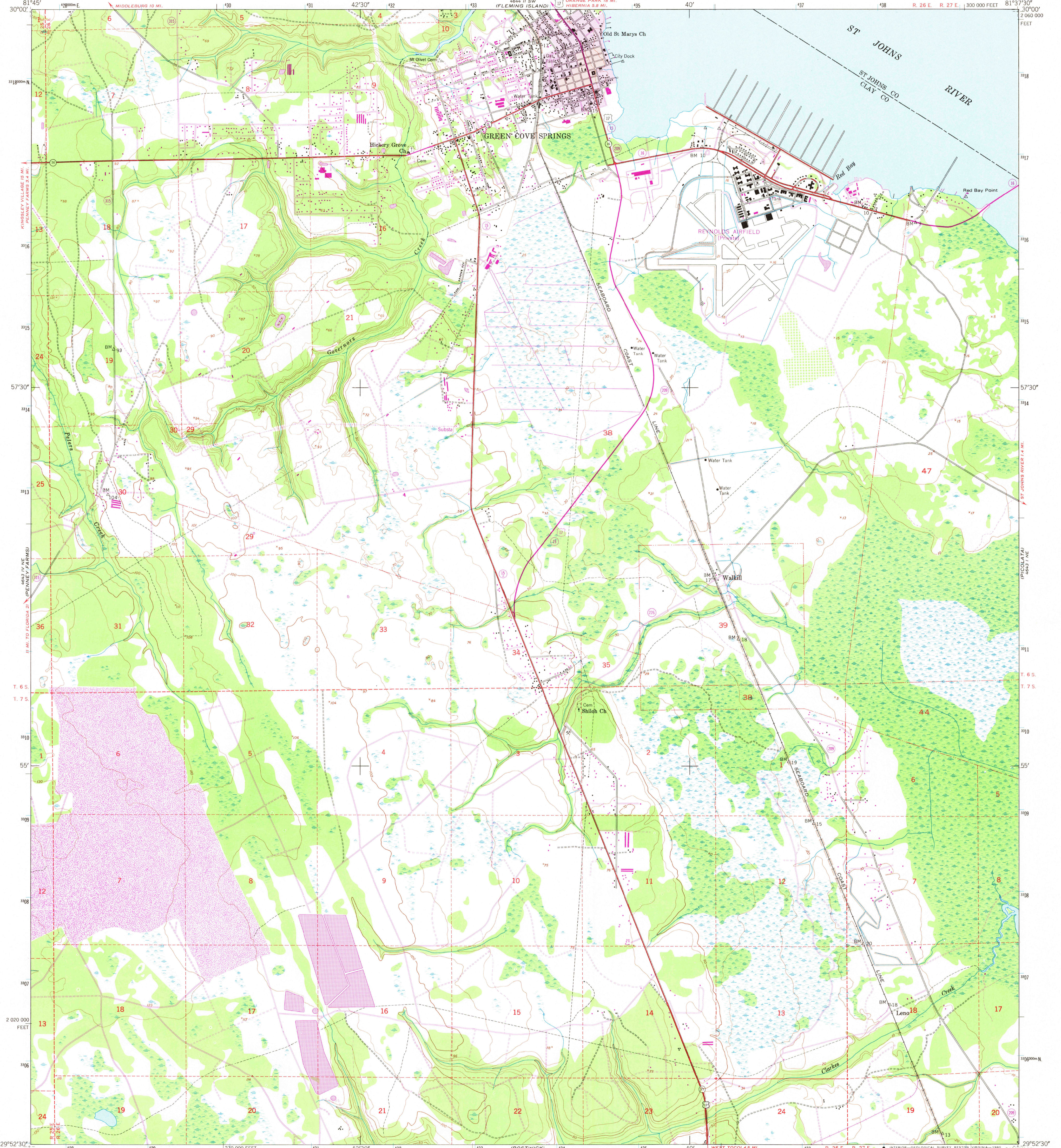
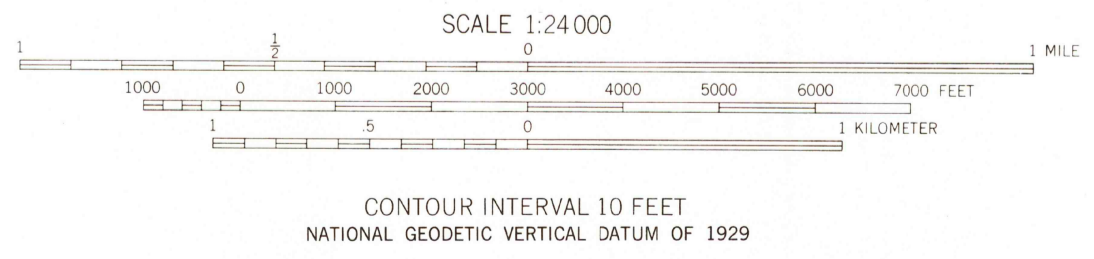
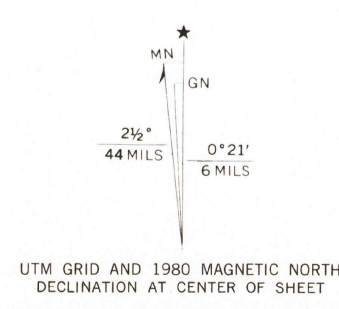


000000 E  
30°00' N

000000 E  
30°00' N



Mapped by the Army Map Service  
Published for civil use by the Geological Survey  
Control by USC&GS, USCE, and Florida Geodetic Survey  
Topography from aerial photographs by multiplex methods  
Aerial photographs taken 1946-1947. Field check 1949  
Polyconic projection  
10,000-foot grid based on Florida coordinate system,  
east zone  
1000-meter Universal Transverse Mercator grid ticks,  
zone 17, shown in blue. 1927 North American Datum  
To place on the predicted North American Datum 1983  
move the projection lines 23 meters south and  
17 meters west as shown by dashed corner ticks  
Dashed land lines indicate approximate locations  
Revisions shown in purple compiled by the Geological Survey  
from aerial photographs taken 1977 and other source data  
This information not field checked. Map edited 1980  
Purple tint indicates extension of urban areas  
Red tint indicates areas in which only landmark buildings are shown  
No distinction is made between barns, dwellings  
commercial and industrial buildings



USGS  
Historical Mapping Division  
MAR 2 1981

GREEN COVE SPRINGS, FLA.  
NW/4 BOSTWICK 15' QUADRANGLE  
N2952.5-W8137.5/7.5

1949  
PHOTOREVISED 1980  
DMA 4643 1 NW - SERIES V847

THIS MAP COMPLIES WITH NATIONAL MAP ACCURACY STANDARDS  
FOR SALE BY U. S. GEOLOGICAL SURVEY, RESTON, VIRGINIA 22092  
A FOLDER DESCRIBING TOPOGRAPHIC MAPS AND SYMBOLS IS AVAILABLE ON REQUEST

1962