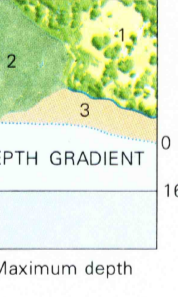


Feet Meters

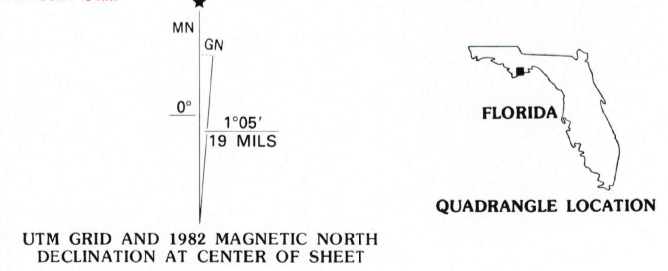
1	3048
2	6096
3	9144
4	12192
5	15240
6	18288
7	21336
8	24384
9	27432
to	33600

To convert feet to meters multiply by 3.048
To convert meters to feet multiply by 3.2808

1. Dryland
2. Wetlands (May be partially submerged at mean high tide. Exposed at mean low tide)

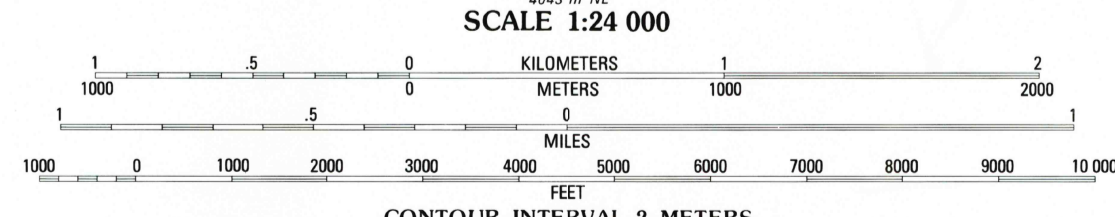


Produced by the United States Geological Survey
Control by USGS and NOS/NOAA
Orthophotomaps prepared from aerial photograph taken January 10, 1976. Topography by photogrammetric methods from aerial photographs taken January 1975
Field checked 1978. Map edited 1982
Supersedes topographic map dated 1944
Bathymetry compiled by the National Ocean Survey from tide coordinated hydrographic surveys
This information is not intended for navigational purposes
Mean low water (dotted) line and mean high water (solid) line compiled by NOS from tide coordinated aerial photographs
Apparent shoreline (outer edge of vegetation) shown by photomicrography
Projection and 10,000-foot grid ticks: Florida coordinate system, north zone (Lambert conformal conic)
1000-meter Universal Transverse Mercator grid, zone 16 1927 North American Datum
To place on the predicted North American Datum 1983 move the projection lines 21 meters south and 8 meters west as shown by dashed corner ticks
Dotted land lines established by private subdivision of the Forbes Purchase

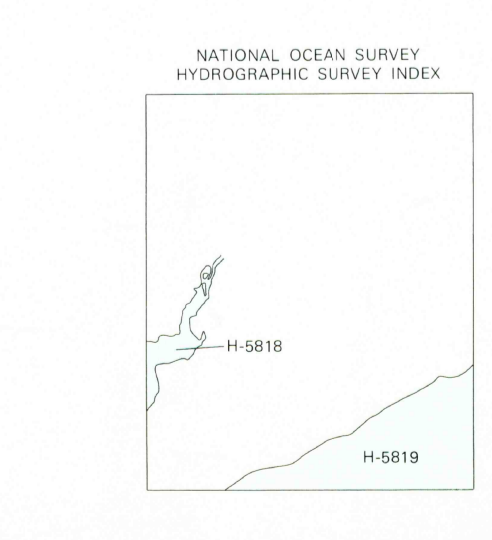


HYDROGRAPHIC SURVEY INFORMATION

Survey Number	Survey Date	Survey Scale	Survey Line Spacing (Naut. Miles)
H-5818	1955	1:20,000	02-10
H-5819	1955	1:20,000	05-15



CONTOUR INTERVAL 2 METERS
SUPPLEMENTARY CONTOUR INTERVAL 1 METER
DASHED SUPPLEMENTARY CONTOURS ARE APPROXIMATE
NATIONAL GEODETIC VERTICAL DATUM OF 1929
CONTROL ELEVATIONS SHOWN TO THE NEAREST 0.1 METER
OTHER ELEVATIONS SHOWN TO THE NEAREST 0.5 METER
BATHYMETRIC CONTOUR INTERVAL 1 METER WITH SUPPLEMENTARY
0.5 METER CONTOURS—GULF COAST LOW WATER DATUM
THE RELATIONSHIP BETWEEN THE TWO DATUMS IS VARIABLE
THE MEAN RANGE OF TIDE IS APPROXIMATELY 0.8 METER
BASE MAP COMPLIES WITH NATIONAL MAP ACCURACY STANDARDS
BATHYMETRIC SURVEY DATA COMPLIES WITH INTERNATIONAL HYDROGRAPHIC ORGANIZATION (IHO) SPECIAL PUBLICATION 44 ACCURACY STANDARDS AND/OR STANDARDS USED AT THE DATE OF THE SURVEY
AND NATIONAL OCEAN SURVEY, ROCKVILLE, MARYLAND 20852
FOR SALE BY U. S. GEOLOGICAL SURVEY, DENVER, COLORADO 80225, OR RESTON, VIRGINIA 22092
A FOLDER DESCRIBING TOPOGRAPHIC MAPS AND SYMBOLS IS AVAILABLE ON REQUEST



ROAD CLASSIFICATION

Primary highway, hard surface — Light-duty road, hard or improved surface
Secondary highway, hard surface — Unimproved road
Trails —
Interstate Route — U. S. Route — State Route
County Route —

GREEN POINT, FLA.
29084-G7024
1982
DMA 4043 IV SE - SERIES V8470

