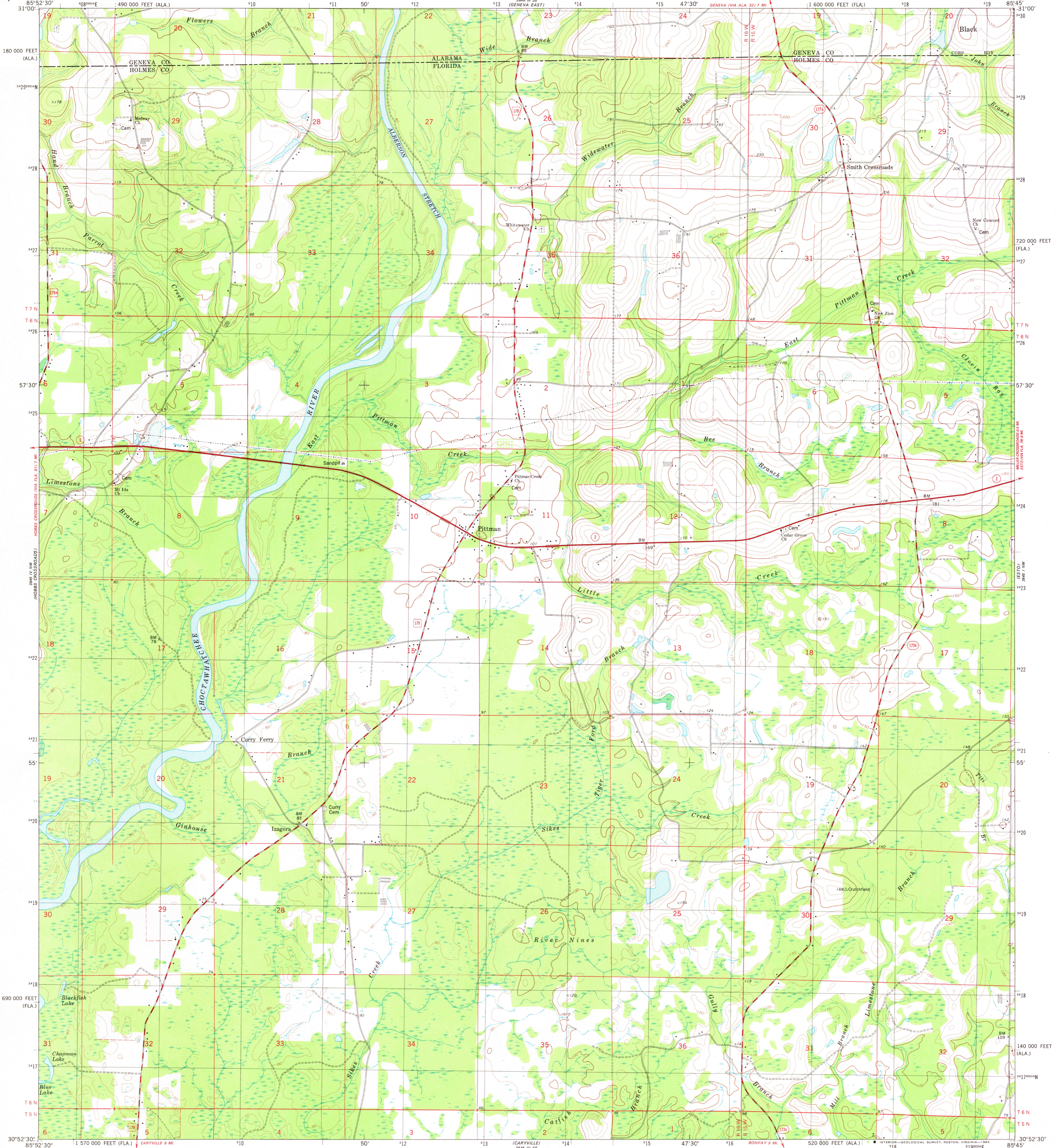
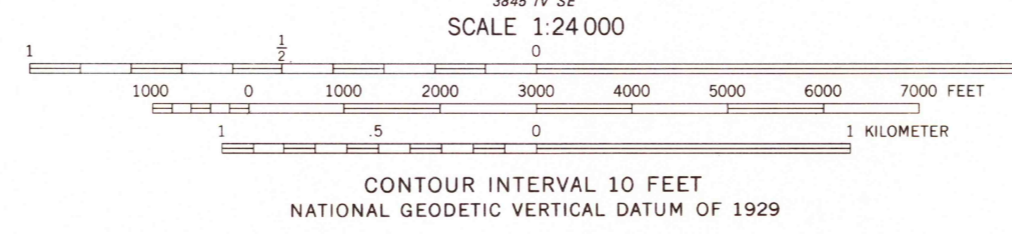
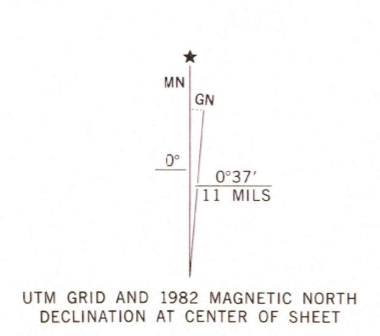


UNITED STATES  
DEPARTMENT OF THE INTERIOR  
GEOLOGICAL SURVEY

IZAGORA QUADRANGLE  
FLORIDA-ALABAMA  
7.5 MINUTE SERIES (TOPOGRAPHIC)



Maped, edited, and published by the Geological Survey in cooperation with the U. S. Corps of Engineers. Revised in cooperation with State of Florida agencies. Control by USGS and NOS/NOAA. Culture and drainage in part compiled from aerial photographs taken 1947. Topography by planetable surveys 1949. Revised from aerial photographs taken January 1976. Field checked 1976. Map edited 1982. Polyconic projection. 10,000-foot grid ticks based on Florida coordinate system, north zone and Alabama coordinate system, east zone. 1000-meter Universal Transverse Mercator grid, zone 16 1927 North American Datum. To place on the predicted North American Datum 1983 move the projection lines 16 meters south and 6 meters west as shown by dashed corner ticks. Fine red dashed lines indicate selected fence and field lines where generally visible on aerial photographs. This information is unchecked.



ROAD CLASSIFICATION

|                                 |   |
|---------------------------------|---|
| Primary highway, hard surface   | Light-duty road, hard or improved surface |
| Secondary highway, hard surface | Unimproved road                           |
| Interstate Route                | U. S. Route                               |
|                                 | State Route                               |
|                                 | County Route                              |

THIS MAP COMPLIES WITH NATIONAL MAP ACCURACY STANDARDS FOR SALE BY U. S. GEOLOGICAL SURVEY, RESTON, VIRGINIA 22092. A FOLDER DESCRIBING TOPOGRAPHIC MAPS AND SYMBOLS IS AVAILABLE ON REQUEST.

IZAGORA, FLA.-ALA.  
N3052.5-W8545/7.5  
1982  
DMA 3845 IV NE-SERIES V847

MAY 16 1983  
2500