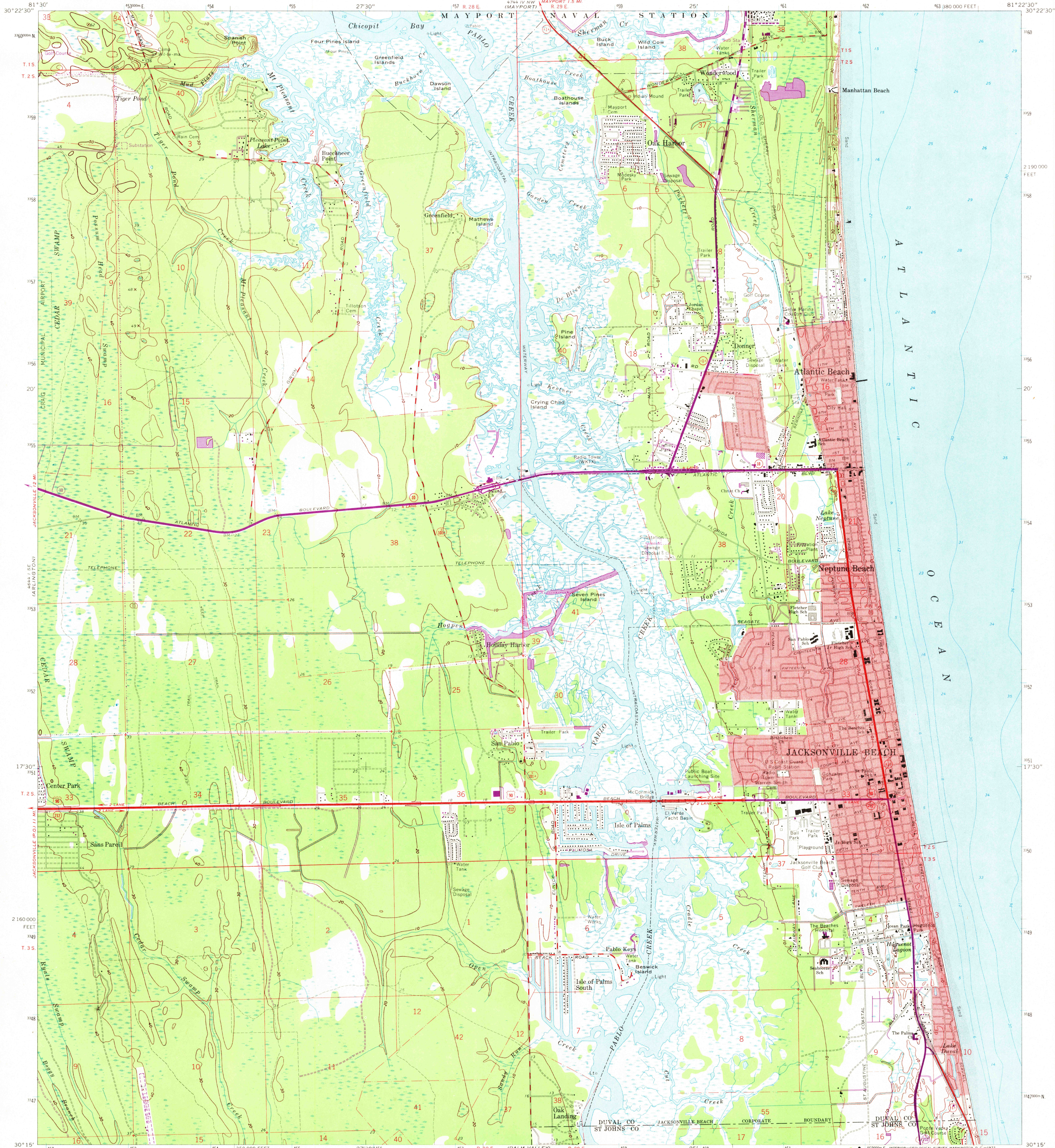


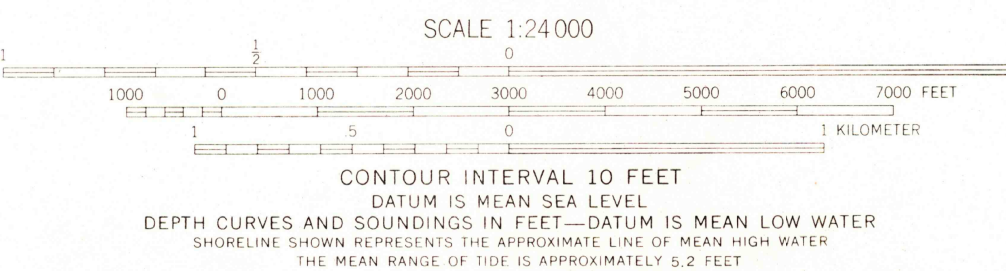
UNITED STATES
DEPARTMENT OF THE INTERIOR
GEOLOGICAL SURVEY

JACKSONVILLE BEACH QUADRANGLE
FLORIDA
7.5 MINUTE SERIES (TOPOGRAPHIC)



Mapped, edited, and published by the Geological Survey
Control by USGS, USC&GS, USCE, and Florida Geodetic Survey
Planimetry by photogrammetric methods from aerial photographs taken 1943. Topography by planimeter surveys 1948. Revised from aerial photographs taken 1963. Field checked 1964
Selected hydrographic data compiled from USC&GS Charts 569 (1963), 577 (1963), and 1243 (1962). This information is not intended for navigational purposes
Polyconic projection. 1927 North American datum
10 000-foot grid based on Florida coordinate system, east zone
1000-meter Universal Transverse Mercator grid ticks, zone 17, shown in blue
Fire red dashed lines indicate selected fence and field lines where generally visible on aerial photographs. This information is unchecked
Red tint indicates areas in which only landmark buildings are shown

Revisions shown in purple compiled from aerial photographs taken 1970. This information not field checked



THIS MAP COMPLIES WITH NATIONAL MAP ACCURACY STANDARDS
FOR SALE BY U.S. GEOLOGICAL SURVEY, WASHINGTON, D.C. 20542
A FOLDER DESCRIBING TOPOGRAPHIC MAPS AND SYMBOLS IS AVAILABLE ON REQUEST

ROAD CLASSIFICATION
Heavy-duty ——— Light-duty ———
Medium-duty ——— Unimproved dirt ———
U.S. Route ——— State Route ———

JACKSONVILLE BEACH, FLA.

N3015-W8122.5/7.5

USGS
HISTORICAL FILE
TOPOGRAPHIC DIVISION

1964
PHOTOREVISED 1970
AMS 4744 IV SW-SERIES V847

AUG 15 1972