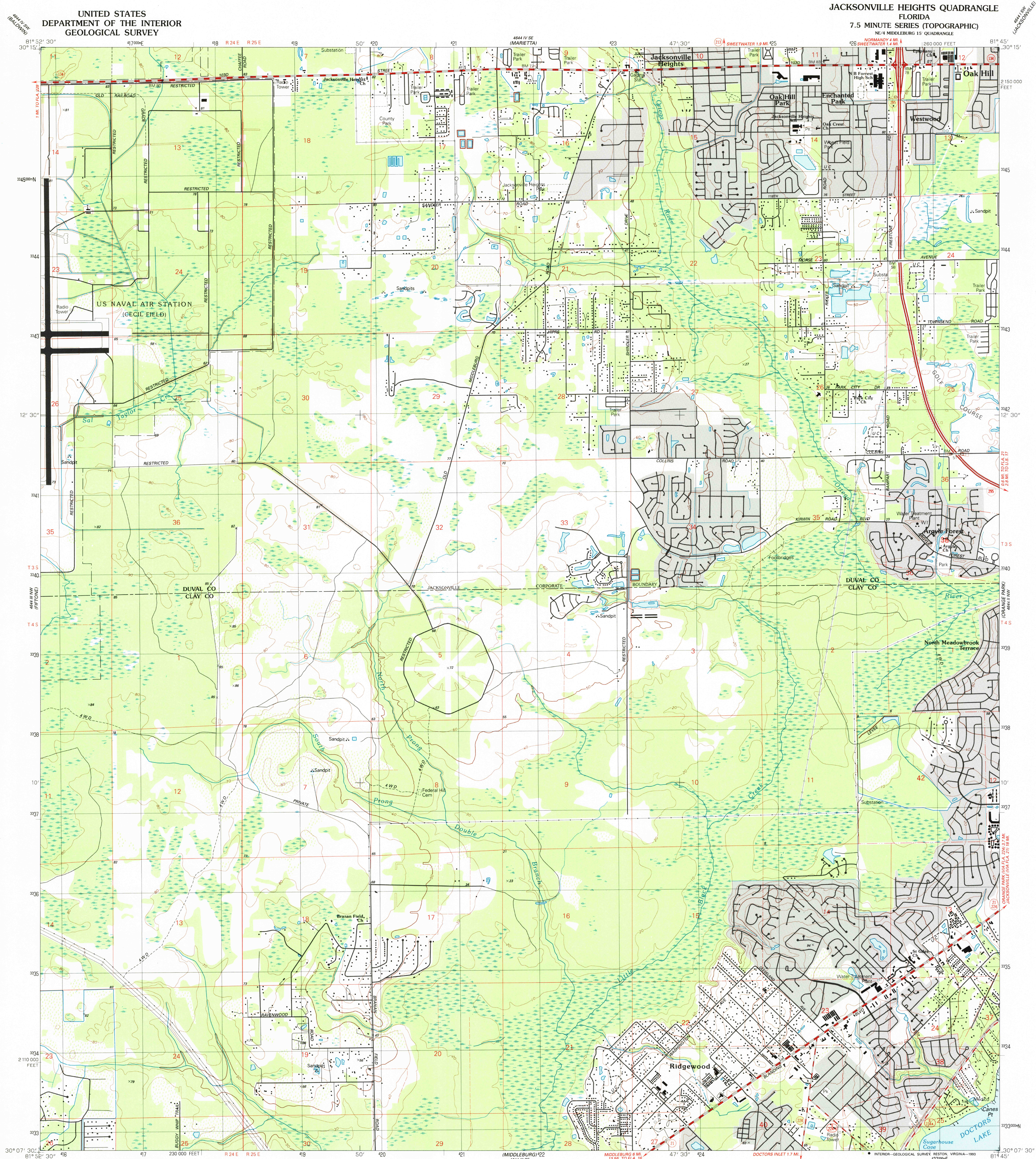


UNITED STATES  
DEPARTMENT OF THE INTERIOR  
GEOLOGICAL SURVEY

JACKSONVILLE HEIGHTS QUADRANGLE  
FLORIDA  
7.5 MINUTE SERIES (TOPOGRAPHIC)



Produced by the United States Geological Survey  
Control by USGS and NOS/NOAA  
Topography by photogrammetric methods from aerial photographs  
taken 1946-47. Field checked 1949. Revised from aerial photographs  
taken 1987-88. Field checked 1989. Map edited 1993  
Projection and 10,000-foot grid ticks: Florida coordinate  
system, east zone (transverse Mercator)  
1000-meter Universal Transverse Mercator grid, zone 17  
1927 North American Datum (NAD 27)  
North American Datum of 1983 (NAD 83) is shown by dashed corner ticks  
The values of the shift between NAD 27 and NAD 83 for 7.5-minute  
intersections are given in USGS Bulletin 1875  
There may be private inholdings within the boundaries of  
the National or State reservations shown on this map  
Gray tint indicates areas in which only landmark buildings are shown  
Fine red dashed lines indicate selected fence and field lines where  
generally visible on aerial photographs. This information is unchecked

UTM GRID AND 1993 MAGNETIC NORTH  
DECLINATION AT CENTER OF SHEET

SCALE 1:24 000  
1 000 0 1000 2000 3000 4000 5000 6000 7000 8000 9000 10 000  
KILOMETERS  
METERS  
MILES  
FEET  
CONTOUR INTERVAL 10 FEET  
NATIONAL GEODETIC VERTICAL DATUM OF 1929

COMPLIES WITH U.S. GEOLOGICAL SURVEY STANDARDS FOR SPATIAL ACCURACY - CLASS 2  
FOR SALE BY U.S. GEOLOGICAL SURVEY  
DENVER, COLORADO 80225, OR RESTON, VIRGINIA 22092  
A FOLDER DESCRIBING TOPOGRAPHIC MAPS AND SYMBOLS IS AVAILABLE ON REQUEST



ROAD CLASSIFICATION  
Primary highway, hard surface .....  
Secondary highway, hard surface .....  
Light-duty road, hard or improved surface .....  
Unimproved road .....  
Interstate Route U.S. Route State Route



JACKSONVILLE HEIGHTS, FLA.  
NE 1/4 MIDDLEBURG 15' QUADRANGLE  
30081-B7-TF-024  
1993  
DMA 4644 III NE-SERIES V847