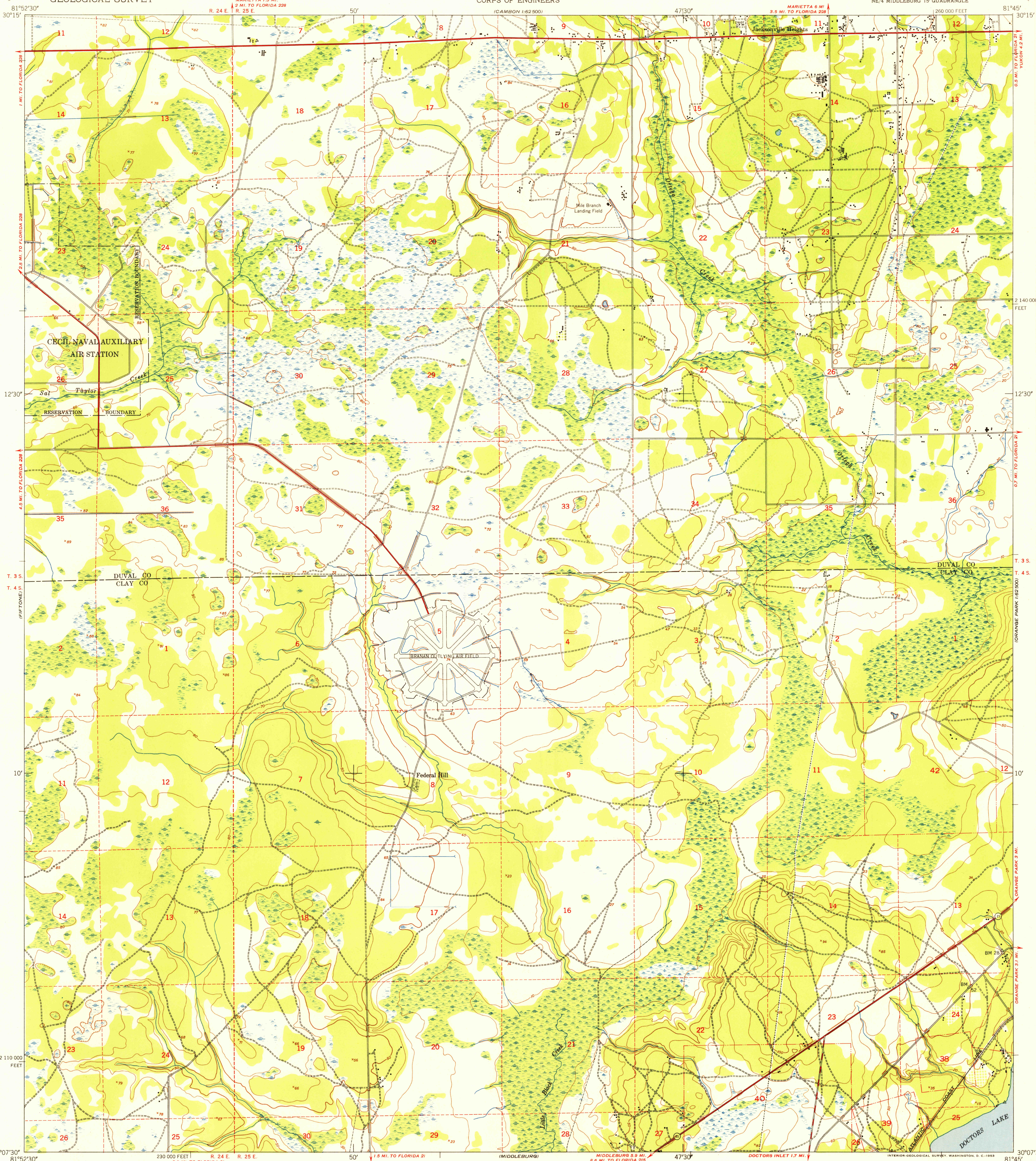


UNITED STATES
DEPARTMENT OF THE INTERIOR
GEOLOGICAL SURVEY

UNITED STATES
DEPARTMENT OF THE ARMY
CORPS OF ENGINEERS

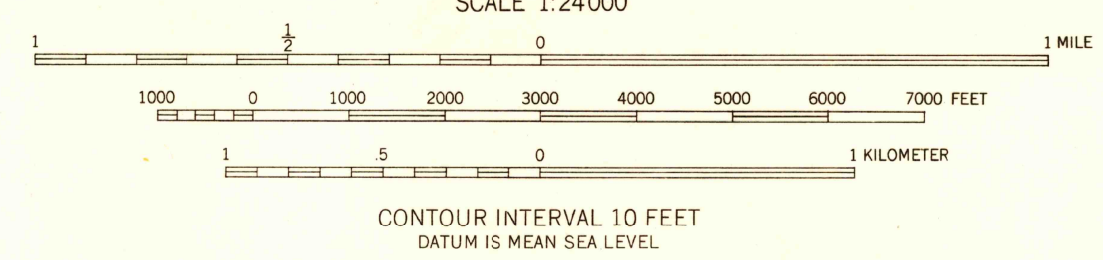
JACKSONVILLE HEIGHTS QUADRANGLE
FLORIDA

7.5 MINUTE SERIES (TOPOGRAPHIC)
NE/4 MIDDLEBURG 15' QUADRANGLE



Mapped by the Army Map Service
Published for civil use by the Geological Survey
Control by USC&GS, USCE, and Florida Geodetic Survey
Topography from aerial photographs by multiplex methods
Aerial photographs taken 1946-1947. Field check 1949
Polyconic projection. 1927 North American datum
10,000-foot grid based on Florida coordinate system,
east zone
No distinction is made between barns, dwellings,
commercial and industrial buildings
Dashed land lines indicate approximate locations
Unchecked elevations are shown in brown

TRUE NORTH
MAGNETIC NORTH
APPROXIMATE MEAN
DECLINATION, 1949



THIS MAP COMPLIES WITH NATIONAL MAP ACCURACY STANDARDS
FOR SALE BY U. S. GEOLOGICAL SURVEY, WASHINGTON 25, D. C.
A FOLDER DESCRIBING TOPOGRAPHIC MAPS AND SYMBOLS IS AVAILABLE ON REQUEST

USGS
Historical File
Topographic Division



FILE COPY
Inspection and Editing

ROAD CLASSIFICATION
Heavy-duty 4 LANE 16 LANE Light-duty
Medium-duty 4 LANE 16 LANE Unimproved dirt
U. S. Route State Route

JACKSONVILLE HEIGHTS, FLA.
NE/4 MIDDLEBURG 15' QUADRANGLE
N3007.5-W8145/7.5
1949

OCT 12 1953
2610