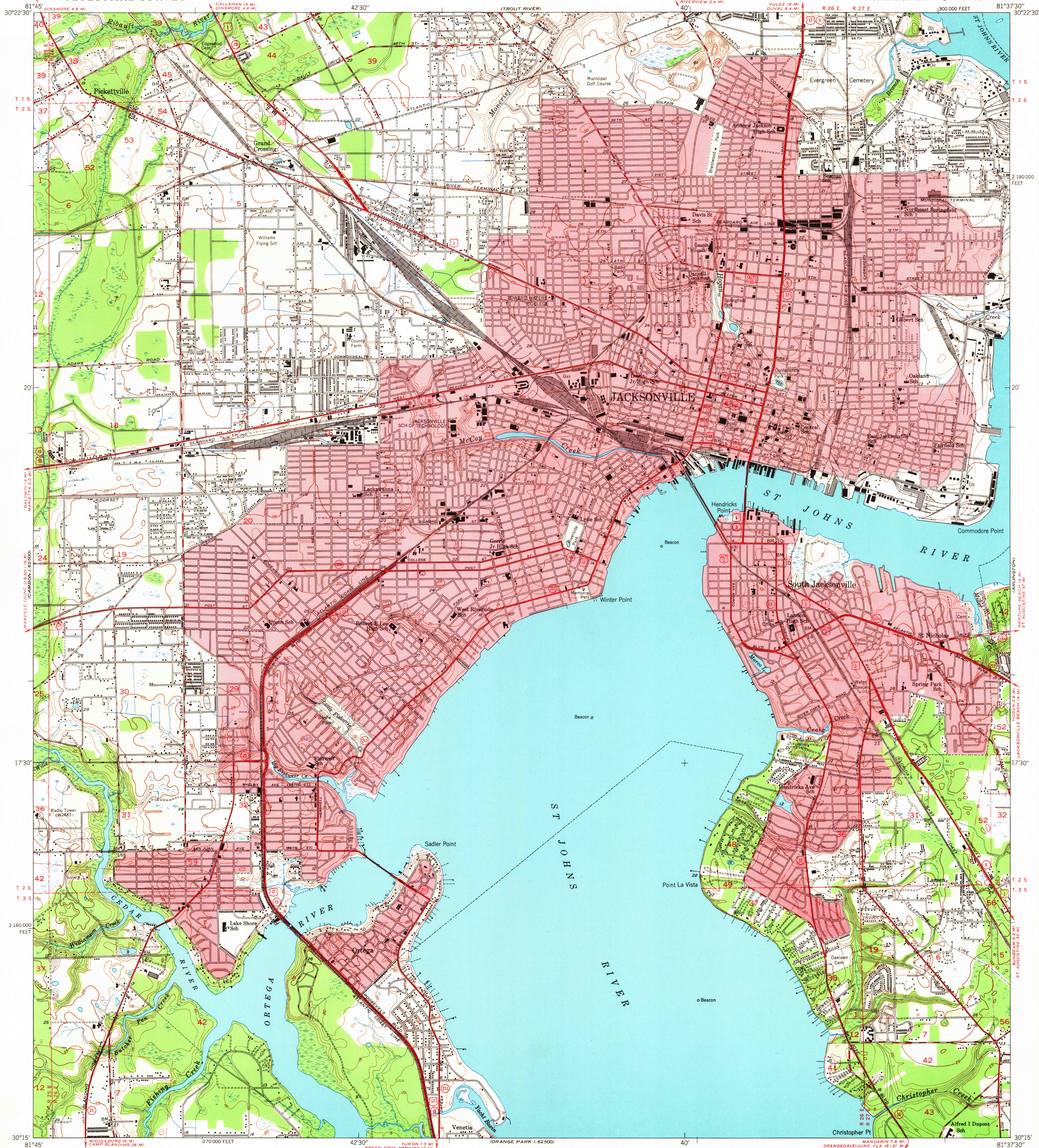


UNITED STATES
DEPARTMENT OF THE INTERIOR
GEOLOGICAL SURVEY

UNITED STATES
DEPARTMENT OF THE ARMY
CORPS OF ENGINEERS

JACKSONVILLE QUADRANGLE
FLORIDA-DUVAL CO.
7.5 MINUTE SERIES (TOPOGRAPHIC)
SW/4 JACKSONVILLE 15' QUADRANGLE



Mapped, edited, and published by the Geological Survey

Control by USC&GS, USGS, and
Florida Geodetic Survey

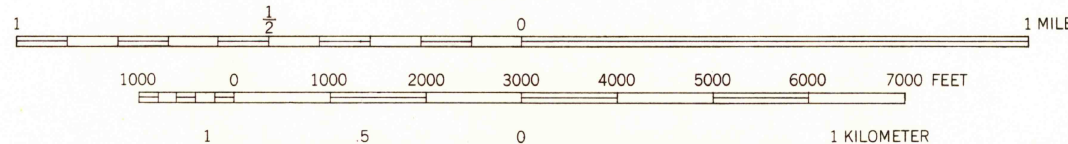
Culture and drainage in part compiled from
USC&GS charts prepared 1933, revised 1948
Topography by plane-table methods 1948

Polyconic projection. 1927 North American datum
10,000-foot grid based on Florida coordinate system,
east zone

Red tint indicates areas in which only
landmark buildings are shown

Land lines omitted within Jacksonville city limits

SCALE 1:24,000



CONTOUR INTERVAL 5 FEET

DATUM IS MEAN SEA LEVEL
SHORELINE SHOWN REPRESENTS THE APPROXIMATE LINE OF MEAN HIGH WATER
THE AVERAGE RANGE OF TIDE IS APPROXIMATELY 1 FOOT

THIS MAP COMPLIES WITH NATIONAL MAP ACCURACY STANDARDS

FOR SALE BY U. S. GEOLOGICAL SURVEY, WASHINGTON 25, D. C.
A FOLDER DESCRIBING TOPOGRAPHIC MAPS AND SYMBOLS IS AVAILABLE ON REQUEST

USGS
Historical File
Topographic Division

ROAD CLASSIFICATION

HARD-SURFACE ALL WEATHER ROADS DRY WEATHER ROADS
Heavy-duty LANE 18 LANE Improved dirt
Medium-duty LANE 18 LANE Unimproved dirt
Loose-surface, graded, or narrow hard-surface
U. S. Route State Route

U.S.G.S.
FILE COPY
TOPOGRAPHIC DIVISION

JACKSONVILLE, FLA.
SW/4 JACKSONVILLE 15' QUADRANGLE
N3015-W8137.5/7.5

EDITION OF 1950

DEC 17 1950