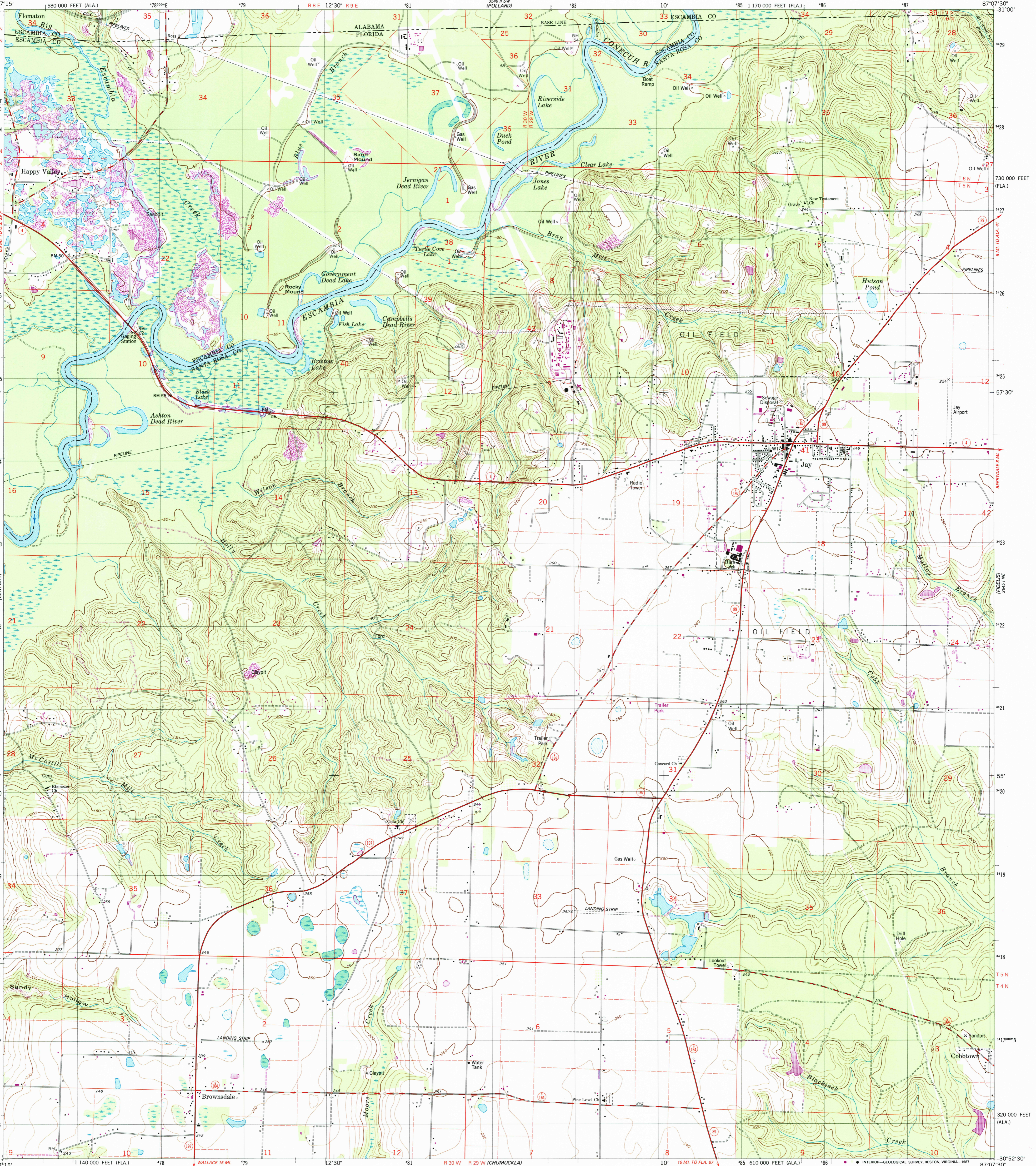


31°00' 30' 25' 20' 15' 10' 5' 0' 5' 10' 15' 20' 25' 30' 35' 40' 45' 50' 55' 60' 65' 70' 75' 80' 85' 90' 95' 100'

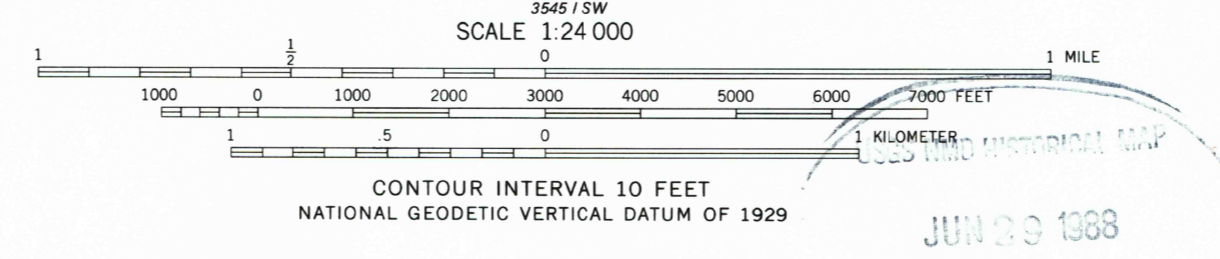
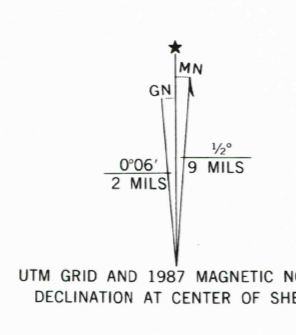
UNITED STATES
DEPARTMENT OF THE INTERIOR
GEOLOGICAL SURVEY

STATE OF FLORIDA

JAY QUADRANGLE
FLORIDA-ALABAMA
7.5 MINUTE SERIES (TOPOGRAPHIC)



Mapped, edited, and published by the Geological Survey
Control by USGS, NOS/NOAA, and Florida Department of Transportation
Topography by photogrammetric methods from aerial photographs taken February 1974. Field checked 1974. Map edited 1978
Projection: Florida coordinate system, north zone (Lambert conformal conic) 10,000-foot grid ticks based on Florida coordinate system, north zone, and Alabama coordinate system, west zone 1000-meter Universal Transverse Mercator grid, zone 16 1927 North American Datum
To place on the predicted North American Datum 1983 move the projection lines 16 meters south and 3 meters west as shown by dashed corner ticks
Fine red dashed lines indicate selected fence and field lines where generally visible on aerial photographs. This information is unchecked



THIS MAP COMPLIES WITH NATIONAL MAP ACCURACY STANDARDS
FOR SALE BY U. S. GEOLOGICAL SURVEY
DENVER, COLORADO 80225 OR RESTON, VIRGINIA 22092
A FOLDER DESCRIBING TOPOGRAPHIC MAPS AND SYMBOLS IS AVAILABLE ON REQUEST



ROAD CLASSIFICATION

Primary highway, hard surface	Light-duty road, hard or improved surface
Secondary highway, hard surface	Unimproved road
Interstate Route	U. S. Route
	State Route

JAY, FLA. - ALA.
30087-H2-TF-024
1978
PHOTOREVISED 1987
DMA 3545 1 NW - SERIES V647