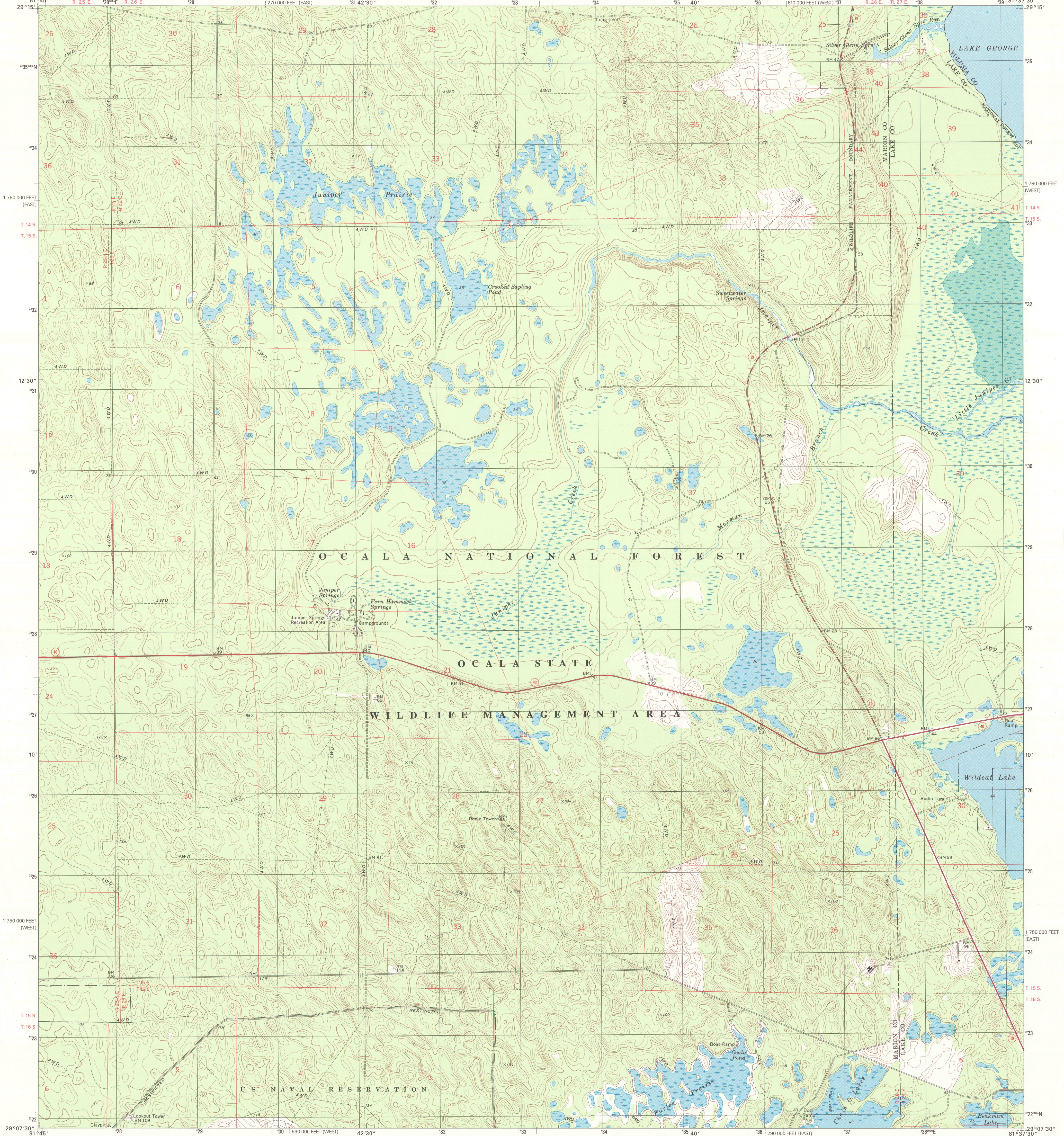




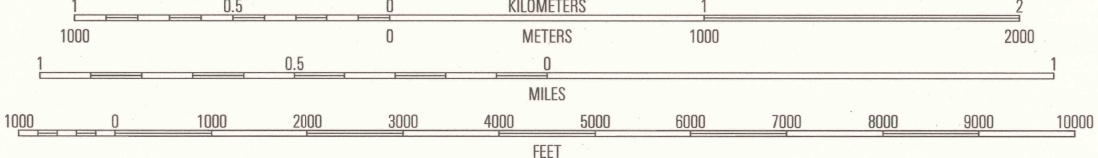
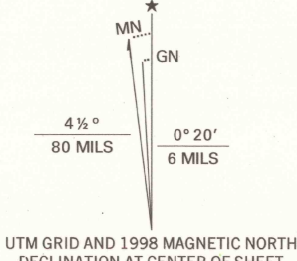
U.S. DEPARTMENT OF THE INTERIOR  
U.S. GEOLOGICAL SURVEY

STATE OF FLORIDA

JUNIPER SPRINGS QUADRANGLE  
FLORIDA  
7.5-MINUTE SERIES (TOPOGRAPHIC)



Produced by the United States Geological Survey  
Derived from imagery taken 1969 and other sources. Photoinspected using imagery taken 1994; no major culture or drainage changes observed. PLSS and survey control current as of 1972  
Boundaries revised 1998  
North American Datum of 1927 (NAD 27)  
Projection: Florida coordinate system, west zone (transverse Mercator)  
10 000-foot ticks: Florida coordinate system, west and east zones  
1000-meter Universal Transverse Mercator grid, zone 17  
North American Datum of 1983 (NAD 83) is shown by dashed corner ticks. The values of the shift between NAD 27 and NAD 83 for 7.5-minute intersections are obtainable from National Geodetic Survey NADCON software  
Selected hydrographic data compiled from USCGS Chart 687 (1968)  
This information is not intended for navigational purposes  
There may be private inholdings within the boundaries of the National or State reservations shown on this map  
Where omitted, land lines have not been established



CONTOUR INTERVAL 5 FEET  
NATIONAL GEODETIC VERTICAL DATUM OF 1929  
TO CONVERT FROM FEET TO METERS, MULTIPLY BY 0.3048  
SOUNDINGS IN FEET-DATUM IS MEAN LOWER LOW WATER  
THE PERIODIC TIDES IN THIS AREA ARE NEGLECTABLE

THIS MAP COMPLIES WITH NATIONAL MAP ACCURACY STANDARDS  
FOR SALE BY U.S. GEOLOGICAL SURVEY, P.O. BOX 25286, DENVER, COLORADO 80225  
A FOLDER DESCRIBING TOPOGRAPHIC MAPS AND SYMBOLS IS AVAILABLE ON REQUEST



QUADRANGLE LOCATION

1	2	3
4	5	6
7	8	

- 1 Lake Kerr
- 2 Salt Springs
- 3 Welaka Se
- 4 Halfmoon Lake
- 5 Alder
- 6 Lake Mary
- 7 Farles Lake
- 8 Alexander Springs

ADJOINING 7.5' QUADRANGLE NAMES

ROAD CLASSIFICATION  
Primary highway, hard surface  
Secondary highway, hard surface  
Light-duty road, hard or improved surface  
Unimproved road  
Interstate Route  
U.S. Route  
State Route

RECEIVED

AUG 31 1998

JUNIPER SPRINGS, FL

USGS NMD  
HISTORICAL MAP ARCHIVES

NIMA 4642 II NW-SERIES V847

