

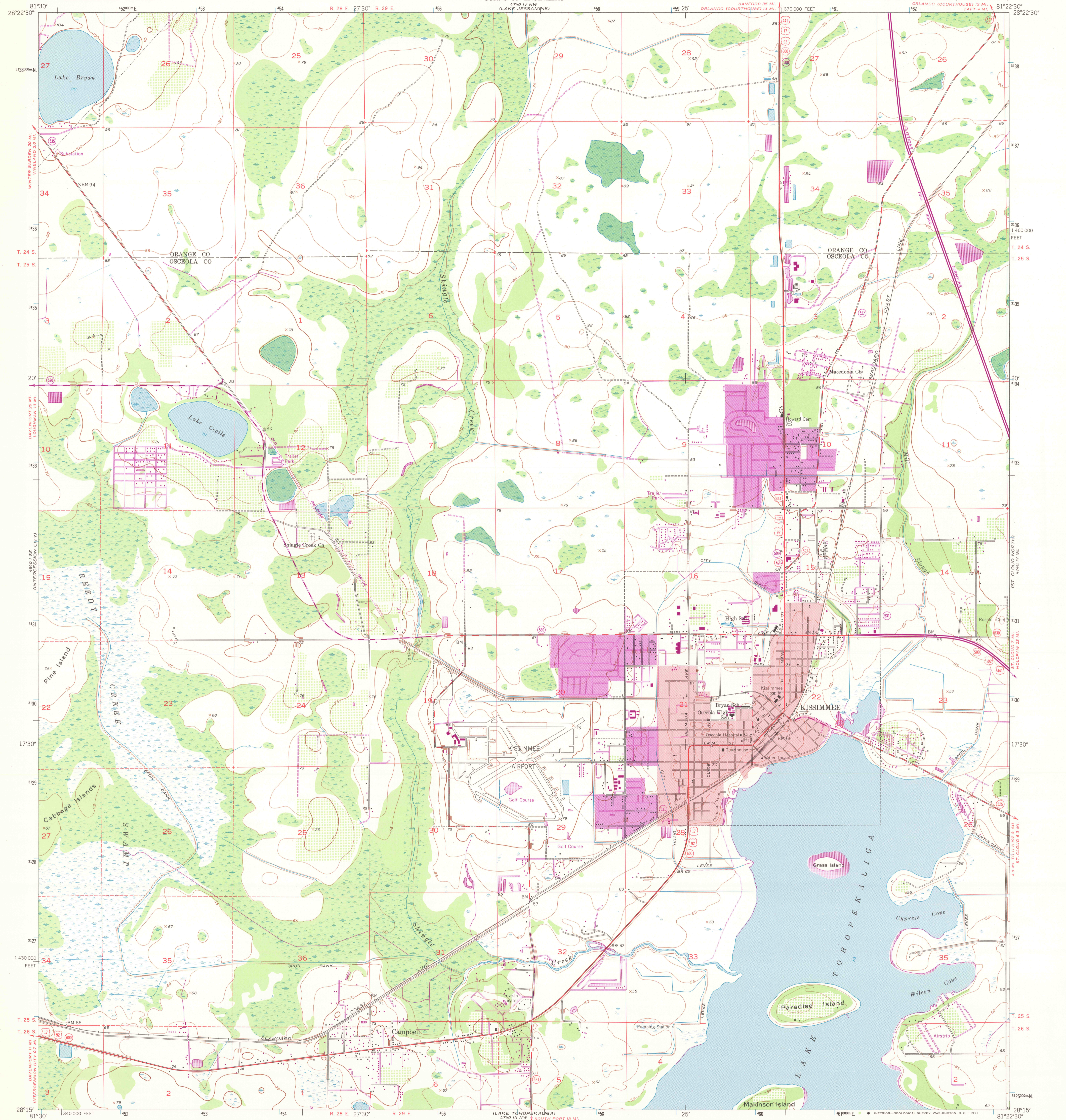
440 1/4 NE  
1/4 WIDE MEAS

440 1/4 NE  
1/4 WIDE MEAS

UNITED STATES  
DEPARTMENT OF THE INTERIOR  
GEOLOGICAL SURVEY

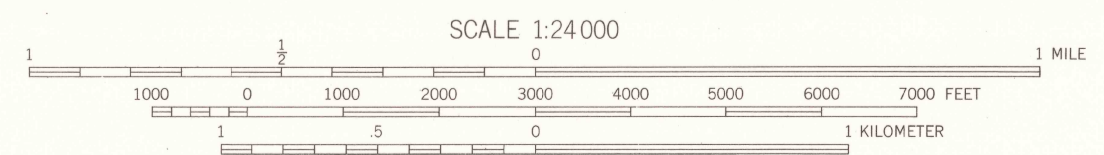
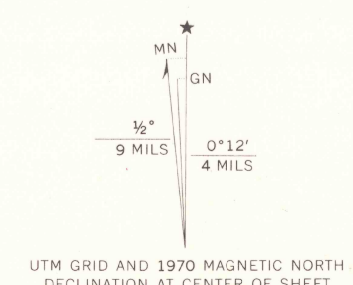
UNITED STATES  
DEPARTMENT OF THE ARMY  
CORPS OF ENGINEERS

KISSIMMEE QUADRANGLE  
FLORIDA  
7.5 MINUTE SERIES (TOPOGRAPHIC)



Mapped by U. S. Corps of Engineers  
Edited and published by the Geological Survey  
Control by USC&GS and USCE  
Culture and drainage in part compiled from aerial photographs  
taken 1950. Topography by plane-table surveys 1950-1951  
Field check by the Geological Survey 1953  
Polyconic projection. 1927 North American datum  
10,000-foot grid based on Florida coordinate system,  
east zone  
Red tint indicates area in which only  
landmark buildings are shown  
Dashed land lines indicate approximate locations  
1000-meter Universal Transverse Mercator grid ticks,  
zone 17, shown in blue

Revisions shown in purple compiled by the Geological Survey from  
aerial photographs taken 1970. This information not field checked  
Purple tint indicates extension of urban areas



SCALE 1:24,000  
CONTOUR INTERVAL 5 FEET  
DATUM IS MEAN SEA LEVEL



ROAD CLASSIFICATION

Heavy-duty	4 LANE 6 LANE	Light-duty
Medium-duty	4 LANE 6 LANE	Unimproved dirt
U. S. Route		State Route

KISSIMMEE, FLA.  
N2815-W8122.5/7.5

1953  
PHOTOREVISED 1970  
AMS 4740 IV SW-SERIES V847

THIS MAP COMPLIES WITH NATIONAL MAP ACCURACY STANDARDS  
FOR SALE BY U. S. GEOLOGICAL SURVEY, WASHINGTON, D. C. 20242  
A FOLDER DESCRIBING TOPOGRAPHIC MAPS AND SYMBOLS IS AVAILABLE ON REQUEST