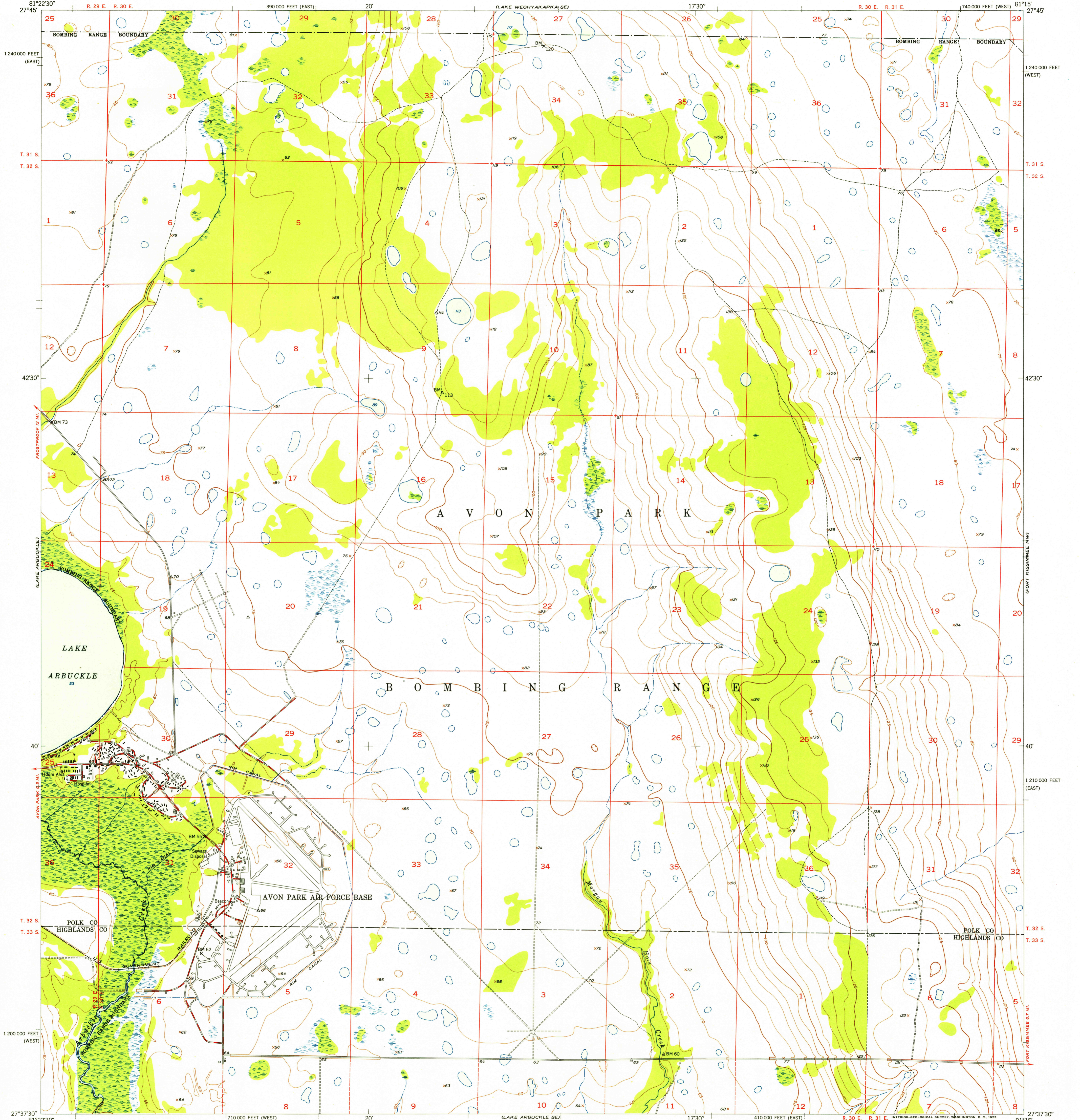


U. S. G. S.
FILE COPY
Inspection and Rating.

UNITED STATES
DEPARTMENT OF THE INTERIOR
GEOLOGICAL SURVEY

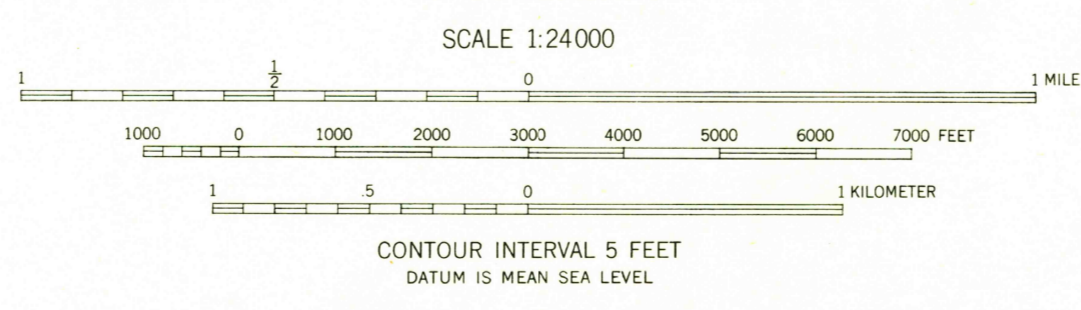
UNITED STATES
DEPARTMENT OF THE ARMY
CORPS OF ENGINEERS

LAKE ARBUCKLE NE, QUADRANGLE
FLORIDA
7.5 MINUTE SERIES (TOPOGRAPHIC)



Mapped by U. S. Corps of Engineers
Edited and published by the Geological Survey
Control by USC&GS, USCE, and
Florida Geodetic Survey
Topography by photogrammetric methods and plane-table
surveys 1950-51. Aerial photographs taken 1950
Culture revision and field check by USGS 1952
Polyconic projection. 1927 North American datum
10,000-foot grids based on Florida coordinate system,
east and west zones
Dashed land lines indicate approximate locations
Certain land lines are omitted in T. 33 S. R. 29 E. and
T. 33 S. R. 30 E. because of insufficient data

14'
TRUE NORTH
MAGNETIC NORTH
APPROXIMATE MEAN
DECLINATION, 1952



USCS
Historical File
Topographic Division

ROAD CLASSIFICATION
Heavy-duty ———+LANE IS LANE Light-duty ———
Medium-duty ———+LANE IS LANE Unimproved dirt - - - - -
U. S. Route ○ State Route ○

U. S. G. S.
FILE COPY
Inspection and Rating.

LAKE ARBUCKLE NE, FLA.
N2737.5-W8115/7.5
1952 FEB 26 1953

THIS MAP COMPLIES WITH NATIONAL MAP ACCURACY STANDARDS
FOR SALE BY U. S. GEOLOGICAL SURVEY, WASHINGTON 25, D. C.
A FOLDER DESCRIBING TOPOGRAPHIC MAPS AND SYMBOLS IS AVAILABLE ON REQUEST