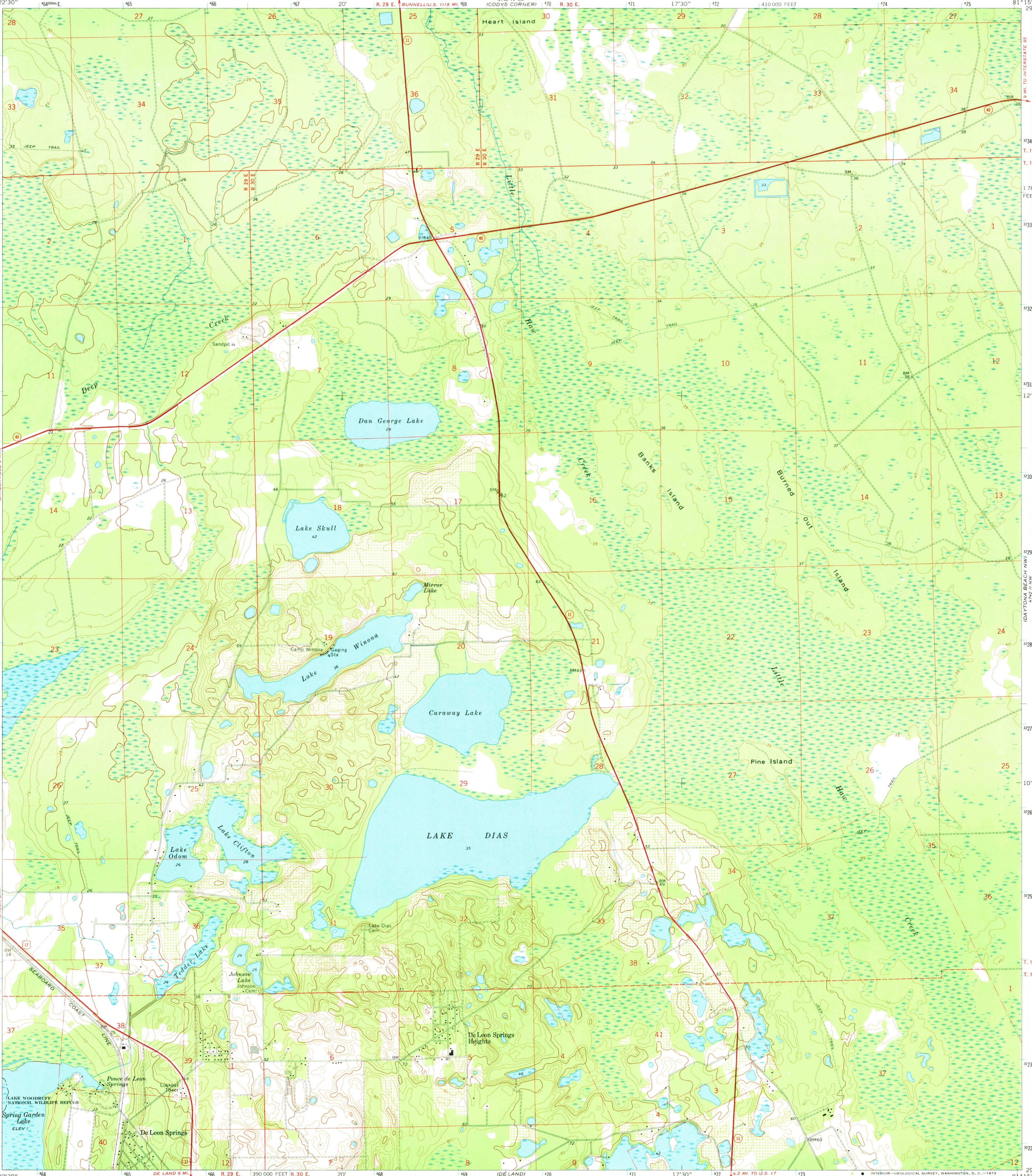
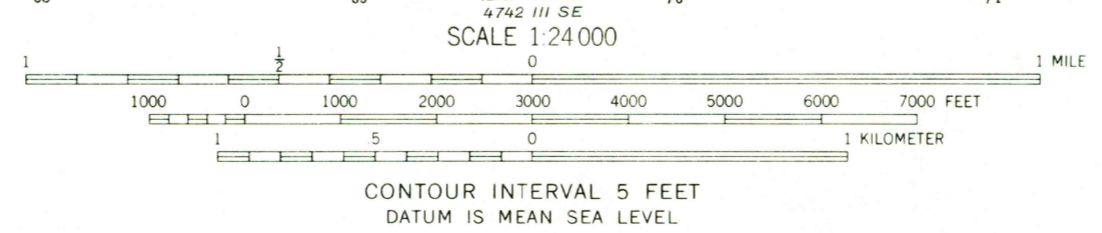
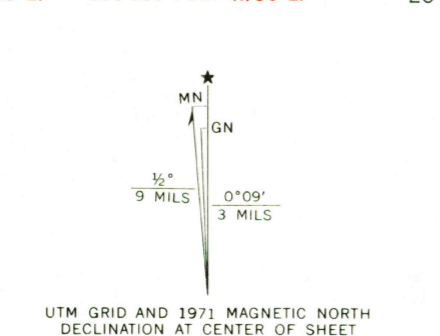


81° 22' 30" W
29° 15' N
3350000 N
334
333
332
331
330
329
328
327
326
325
324
323
322
29° 07' 30" W
81° 22' 30" W

81° 15' W
29° 15' N
1780000 FEET
T. 14 S.
T. 15 S.
12' 30"
T. 15 S.
T. 16 S.
3220000 N
81° 15' W



Mapped, edited, and published by the Geological Survey
Control by USGS and USC&GS
Topography by photogrammetric methods from aerial photographs taken November 1969. Field checked 1971
Polyconic projection. 1927 North American datum
10,000-foot grid based on Florida coordinate system, east zone
1000-meter Universal Transverse Mercator grid ticks, zone 17, shown in blue
Fine red dashed lines indicate selected fence and field lines where generally visible on aerial photographs. This information is unchecked



ROAD CLASSIFICATION

Primary highway, hard surface	Light-duty road, hard or improved surface
Secondary highway, hard surface	Unimproved road
Interstate Route	U. S. Route
	State Route

THIS MAP COMPLIES WITH NATIONAL MAP ACCURACY STANDARDS
FOR SALE BY U. S. GEOLOGICAL SURVEY, WASHINGTON, D. C. 20242
A FOLDER DESCRIBING TOPOGRAPHIC MAPS AND SYMBOLS IS AVAILABLE ON REQUEST

AUG 10 1973
LAKE DIAS, FLA.
N2907.5—W8115.7.5

1971

AMS 4742 III NE—SERIES V847