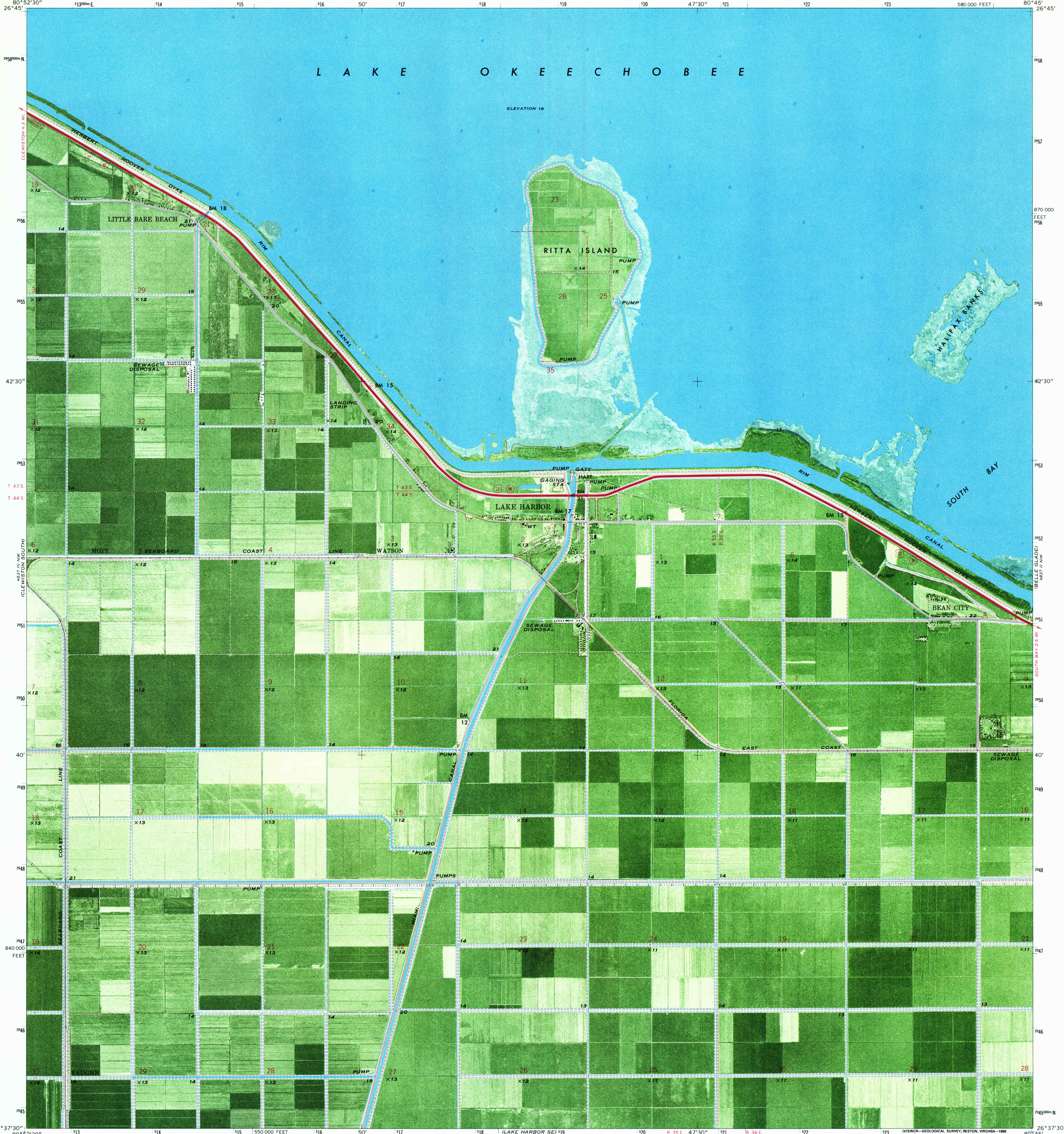
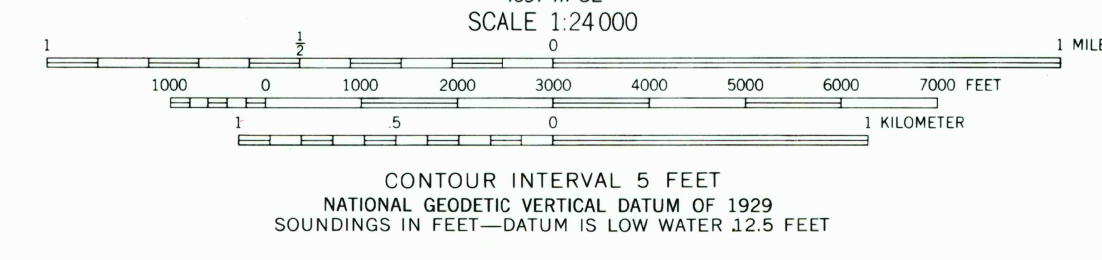
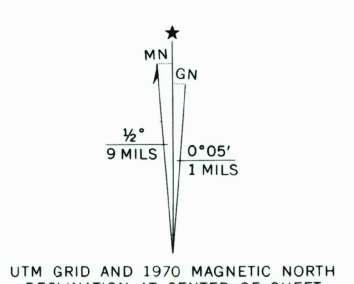


L A K E O K E E C H O B E E



Mapped, edited, and published by the Geological Survey
Control by USGS, USC&GS, and USCE
Orthophotomosaic by photogrammetric methods from aerial photographs
taken January 1970. Topography by planetable surveys 1970
Selected hydrographic data compiled from USC&GS Chart 855 SC
(1970). This information is not intended for navigational purposes
Polyconic projection. 1927 North American datum
10,000-foot grid based on Florida coordinate system, east zone
1000-meter Universal Transverse Mercator grid ticks, zone 17,
shown in blue
Dotted land lines established by private survey
To place on the predicted North American Datum 1983,
move the projection lines 35 meters south and
21 meters west as shown by dashed corner ticks



ROAD CLASSIFICATION

Primary highway, hard surface	Light duty road, hard or improved surface
Secondary highway, hard surface	Unimproved road
Interstate Route	U. S. Route
	State Route



USGS NHD HISTORICAL MAP
DEC 9 1988
REC'D FILE COPY

THIS MAP COMPLIES WITH NATIONAL MAP ACCURACY STANDARDS
FOR SALE BY U. S. GEOLOGICAL SURVEY, DENVER, COLORADO 80225, OR RESTON, VIRGINIA 22092
A FOLDER DESCRIBING TOPOGRAPHIC MAPS AND SYMBOLS IS AVAILABLE ON REQUEST

LAKE HARBOR, FLA.
26080-F7-0M-024
1970
DMA 4837 III NE—SERIES V847