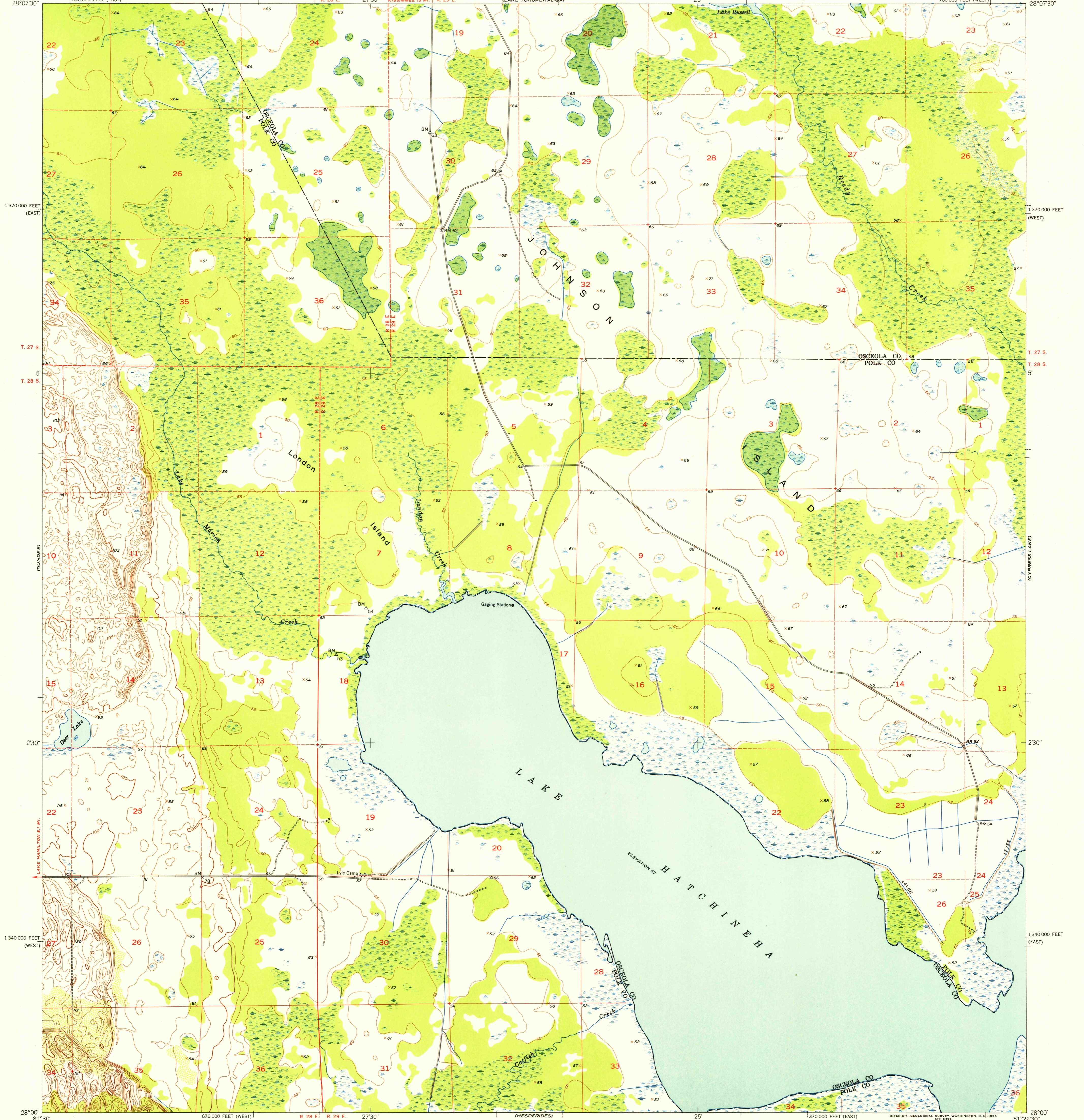


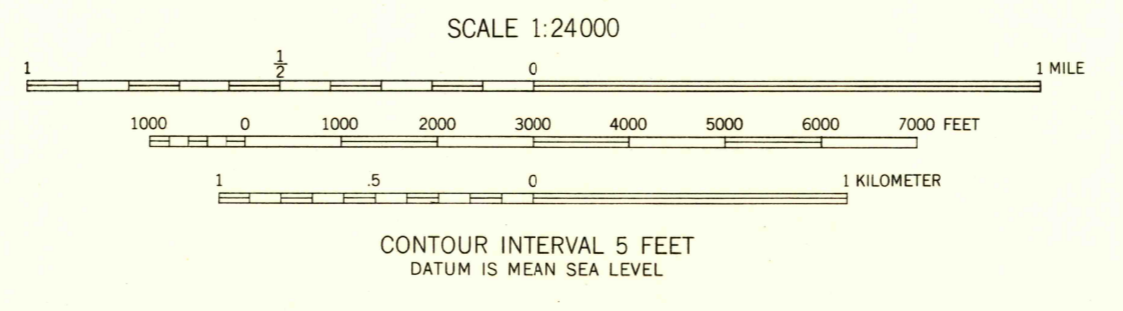
UNITED STATES DEPARTMENT OF THE INTERIOR GEOLOGICAL SURVEY

UNITED STATES DEPARTMENT OF THE ARMY CORPS OF ENGINEERS



Mapped by U. S. Corps of Engineers Edited and published by the Geological Survey Control by USC&GS and USCE Culture and drainage in part compiled from aerial photographs taken 1950. Topography by plane-table surveys 1950-1951 Field check by the Geological Survey 1953 Polyconic projection. 1927 North American datum 10,000-foot grids based on Florida coordinate system, east and west zones Dashed line lines indicate approximate locations

TRUE NORTH
MAGNETIC NORTH
APPROXIMATE MEAN DECLINATION, 1953



ROAD CLASSIFICATION

Heavy-duty	LANE 16 LANE	Light-duty	LANE 16 LANE
Medium-duty	LANE 16 LANE	Unimproved dirt	---

U. S. Route
State Route

THIS MAP COMPLIES WITH NATIONAL MAP ACCURACY STANDARDS FOR SALE BY U. S. GEOLOGICAL SURVEY, WASHINGTON 25, D. C. A FOLDER DESCRIBING TOPOGRAPHIC MAPS AND SYMBOLS IS AVAILABLE ON REQUEST

U.S.G.S. FILE COPY LAKE HATCHINEHA, FLA. N2800-W8122.5/7.5 1953