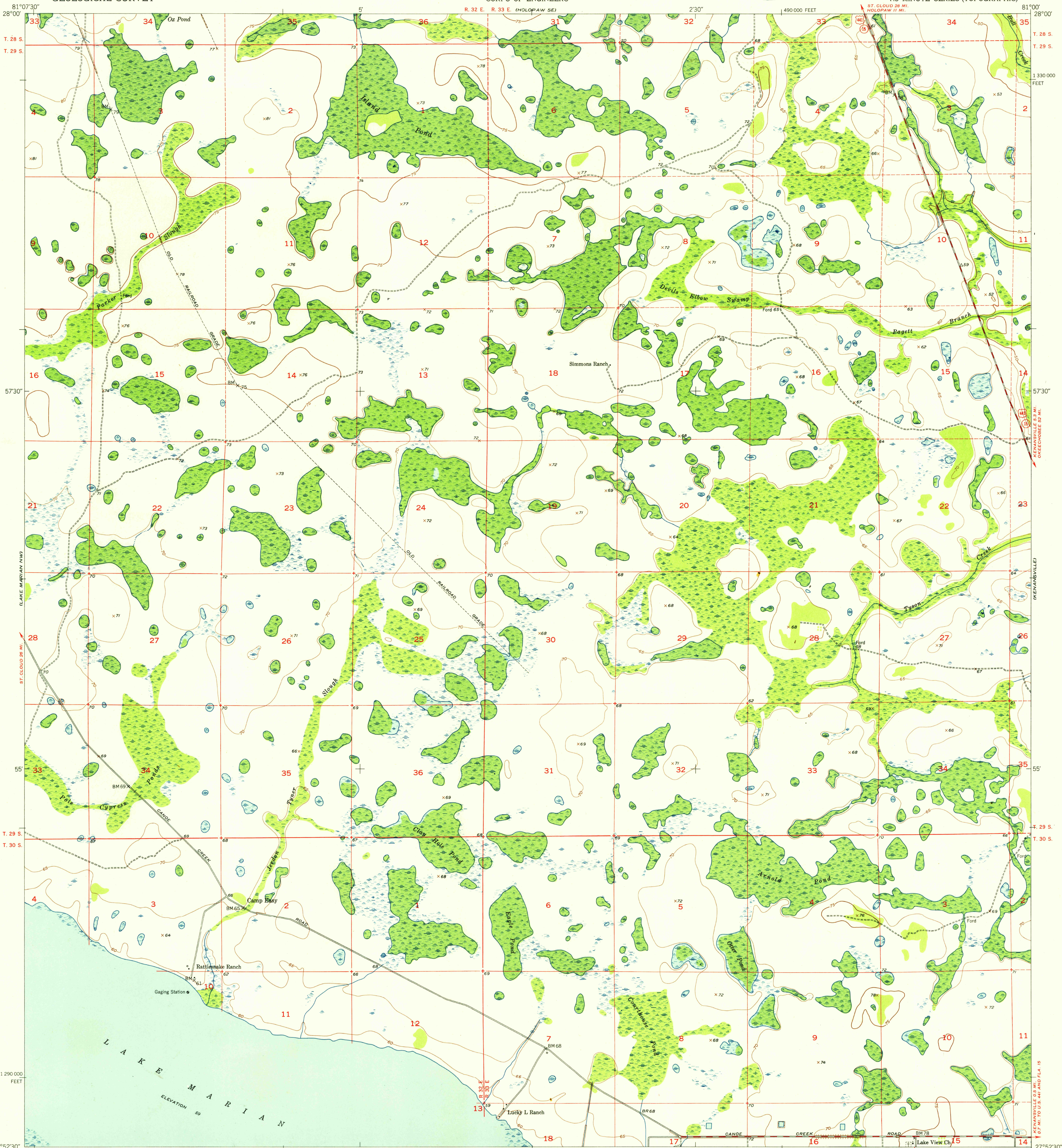
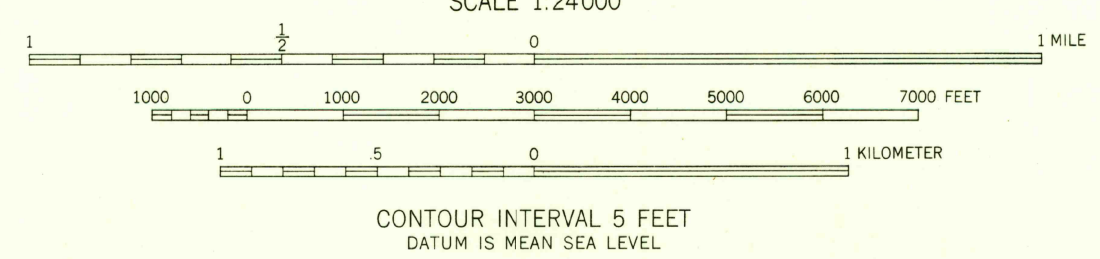


FILE COPY
Reproduction and Editing



Mapped by U. S. Corps of Engineers
Edited and published by the Geological Survey
Control by US&GS and USCE
Culture and drainage in part compiled from aerial photographs
taken 1950. Topography by plane-table surveys 1950-51
Field check by the U. S. Geological Survey 1952-1953
Polyconic projection. 1927 North American datum
10,000-foot grid based on Florida coordinate system,
east zone
Dashed land lines indicate approximate locations

TRUE NORTH
MAGNETIC NORTH
APPROXIMATE MEAN
DECLINATION, 1953



USGS
Historical File
Topographic Division

ROAD CLASSIFICATION
Heavy-duty 4 LANE 16 LANE Light-duty
Medium-duty 4 LANE 16 LANE Unimproved dirt
U. S. Route State Route



FILE COPY
Reproduction and Editing

LAKE MARIAN NE, FLA.
N2752.5-W8100/7.5
1953

THIS MAP COMPLIES WITH NATIONAL MAP ACCURACY STANDARDS
FOR SALE BY U. S. GEOLOGICAL SURVEY, WASHINGTON 25, D. C.
A FOLDER DESCRIBING TOPOGRAPHIC MAPS AND SYMBOLS IS AVAILABLE ON REQUEST

APR 20 1954