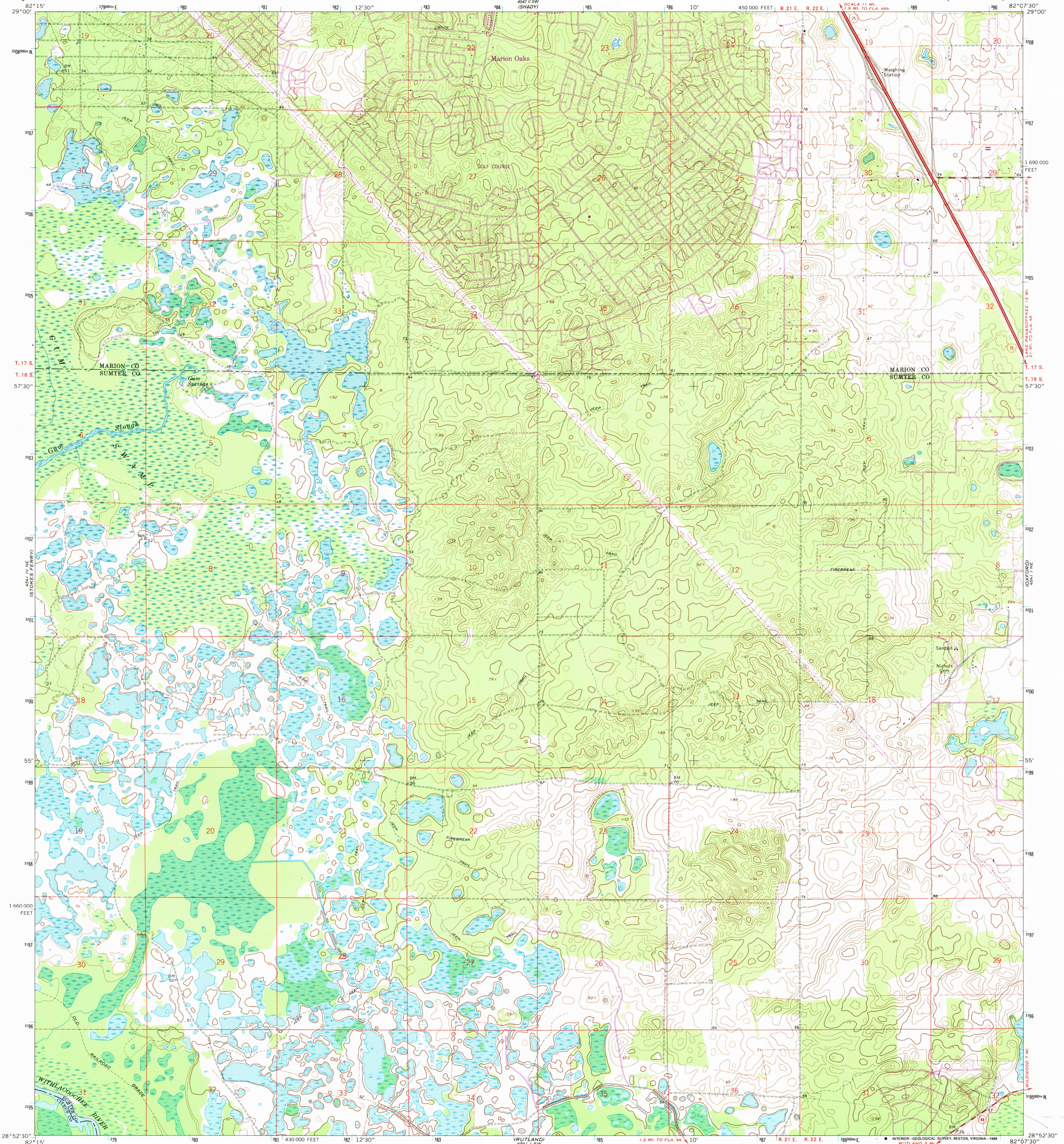


QUADRETS
11 SE
12 SE
13 SE
14 SE
15 SE
16 SE
17 SE
18 SE
19 SE
20 SE
21 SE
22 SE
23 SE
24 SE
25 SE
26 SE
27 SE
28 SE
29 SE

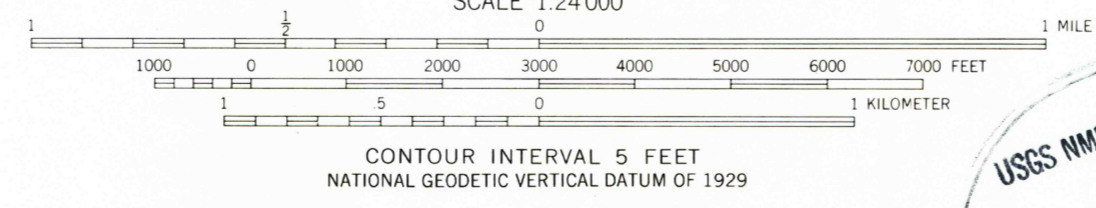
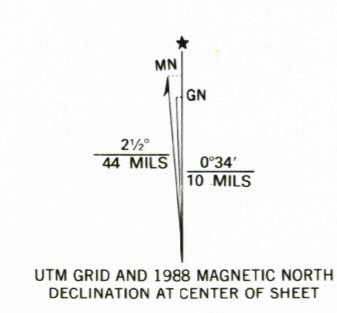
QUADRETS
11 SE
12 SE
13 SE
14 SE
15 SE
16 SE
17 SE
18 SE
19 SE
20 SE
21 SE
22 SE
23 SE
24 SE
25 SE
26 SE
27 SE
28 SE
29 SE

UNITED STATES
DEPARTMENT OF THE INTERIOR
GEOLOGICAL SURVEY

LAKE PANASOFFKEE NW QUADRANGLE
FLORIDA
7.5 MINUTE SERIES (TOPOGRAPHIC)



Mapped, edited, and published by the Geological Survey
Control by USGS and USC&GS
Topography by photogrammetric methods from aerial
photographs taken 1964. Field checked 1966
Polyconic projection. 1927 North American datum
10,000-foot grid based on Florida coordinate system, west zone
1000-meter Universal Transverse Mercator grid ticks,
zone 17, shown in blue
Fine red dashed lines indicate selected fence and field lines where
generally visible on aerial photographs. This information is unchecked
To place on the predicted North American Datum 1983,
move the projection lines 26 meters south and
16 meters west as shown by dashed corner ticks



CONTOUR INTERVAL 5 FEET
NATIONAL GEODETIC VERTICAL DATUM OF 1929

THIS MAP COMPLIES WITH NATIONAL MAP ACCURACY STANDARDS
FOR SALE BY U. S. GEOLOGICAL SURVEY
DENVER, COLORADO 80225, OR RESTON, VIRGINIA 22092
A FOLDER DESCRIBING TOPOGRAPHIC MAPS AND SYMBOLS IS AVAILABLE ON REQUEST

USGS MMO HISTORICAL MAP
DEC 14 1988
REC'D FILE COPY



ROAD CLASSIFICATION

Heavy-duty	Light-duty
Medium-duty	Unimproved dirt
Interstate Route	State Route

LAKE PANASOFFKEE NW, FLA.
28082-H2-TF-024

1966
PHOTOREVISED 1988
DMA 4541 I NW-SERIES V847