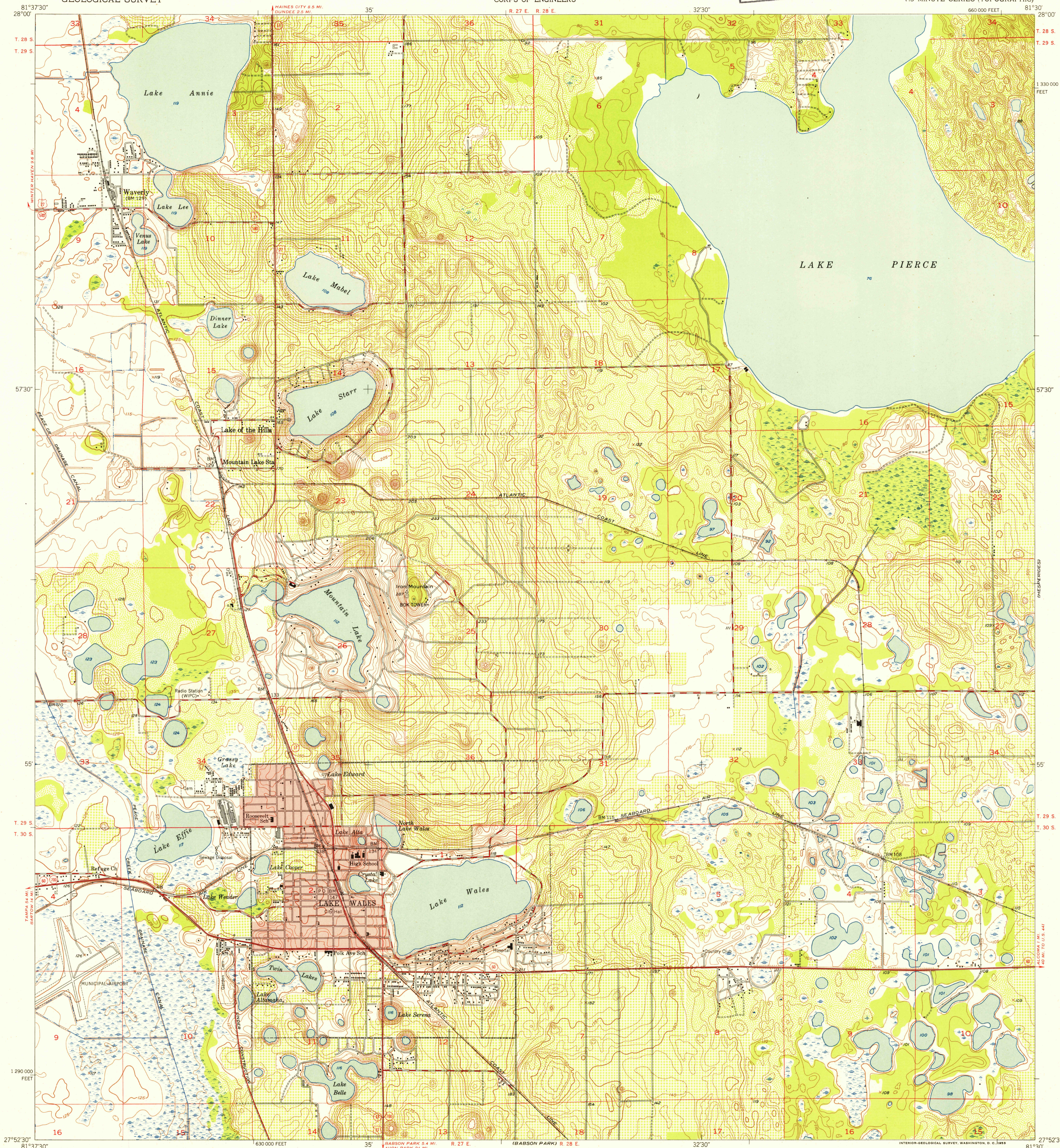
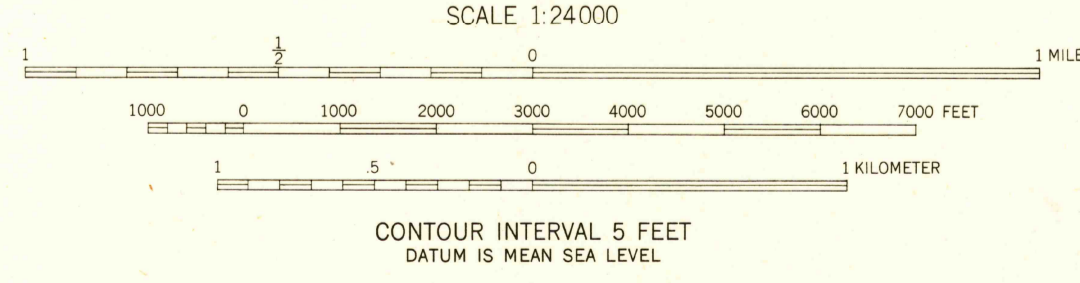


U.S.G.S.
FILE COPY
Inspection and Editing



Mapped by the U. S. Corps of Engineers
Edited and published by the Geological Survey
Control by USGS, USC&GS, USCE, and Florida Geodetic Survey
Topography from aerial photographs by photogrammetric methods
Aerial photographs taken 1950
Field check by the Geological Survey 1952
Polyconic projection. 1927 North American datum
10,000-foot grid based on Florida coordinate system,
west zone
Red tint indicates area in which only
landmark buildings are shown

TRUE NORTH
MAGNETIC NORTH
APPROXIMATE MEAN
DECLINATION, 1952



QUADRANGLE LOCATION

USGS
Historical File
Topographic Division

ROAD CLASSIFICATION	
Heavy-duty	4 LANE 16 LANE Light-duty
Medium-duty	4 LANE 16 LANE Unimproved dirt
U.S. Route	State Route

U.S.G.S.
FILE COPY
Inspection and Editing

LAKE WALES, FLA.
N2752.5-W8130/7.5
1952

THIS MAP COMPLIES WITH NATIONAL MAP ACCURACY STANDARDS
FOR SALE BY U. S. GEOLOGICAL SURVEY, WASHINGTON 25, D. C.
A FOLDER DESCRIBING TOPOGRAPHIC MAPS AND SYMBOLS IS AVAILABLE ON REQUEST