

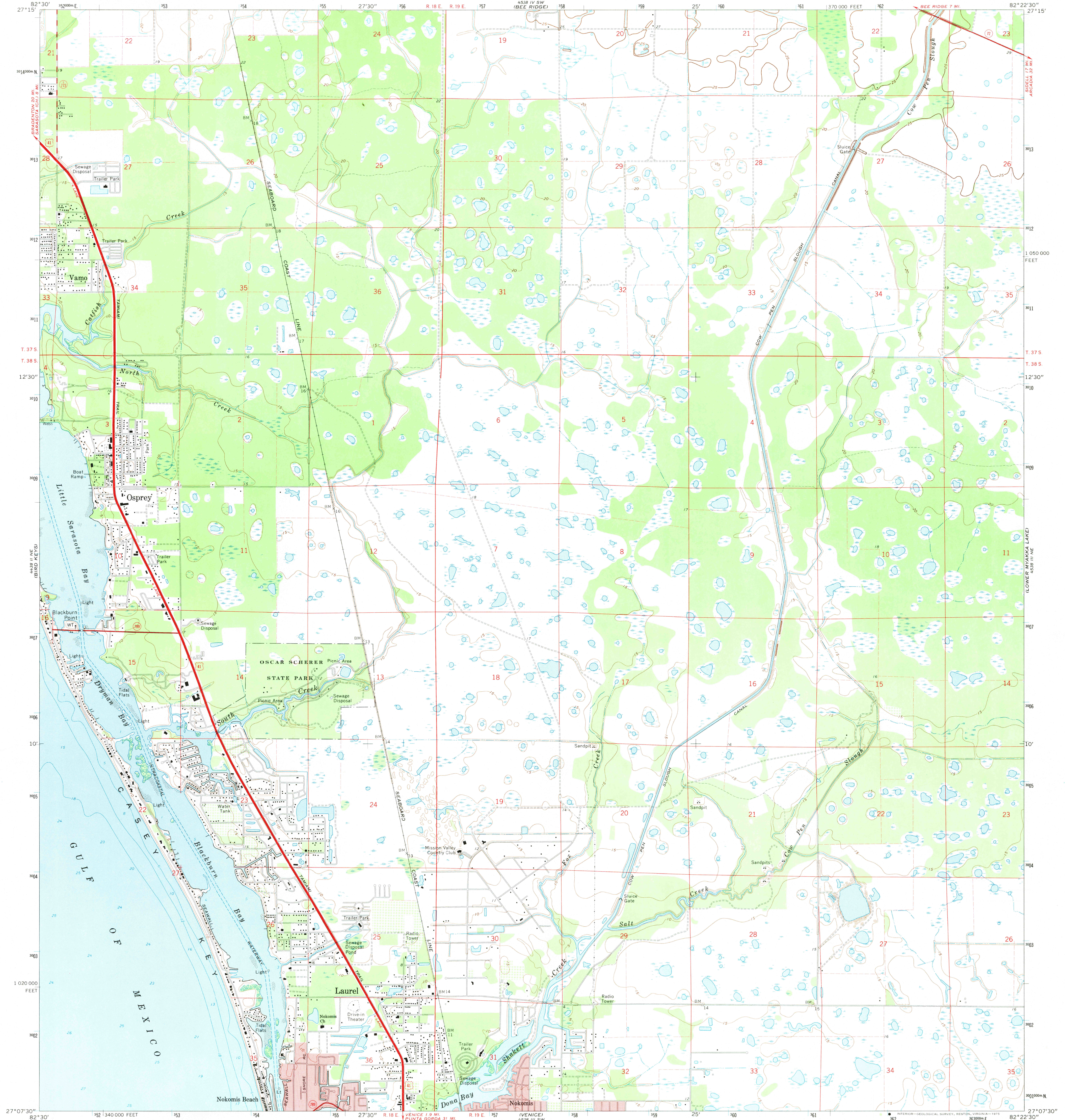
4538 III SE
(SARASOTA)

UNITED STATES
DEPARTMENT OF THE INTERIOR
GEOLOGICAL SURVEY

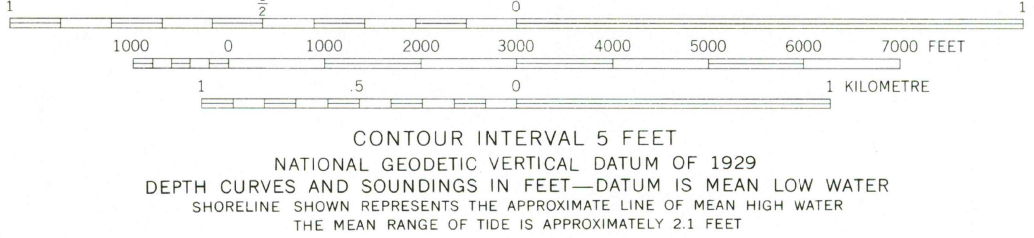
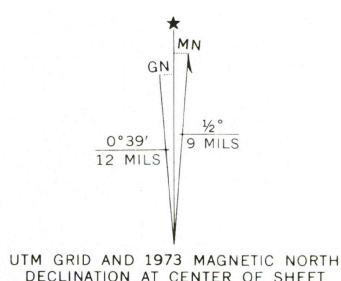
STATE OF FLORIDA

LAUREL QUADRANGLE
FLORIDA-SARASOTA CO.
7.5 MINUTE SERIES (TOPOGRAPHIC)

4538 IV SE
(OLD MYAKKA)



Mapped, edited, and published by the Geological Survey
Control by USGS, NOS/NOAA, and Florida Geodetic Survey
Topography by photogrammetric methods from aerial photographs
taken December 1971. Field checked 1973
Supersedes Army Map Service map dated 1943
Selected hydrographic data compiled from USC&GS Chart 857 SC (1973)
This information is not intended for navigational purposes
Projection and 10,000-foot grid ticks: Florida coordinate
system, west zone (transverse Mercator)
1000-metre Universal Transverse Mercator grid ticks,
zone 17, shown in blue. 1927 North American datum
Fine red dashed lines indicate selected fence and field lines where
definitely visible on aerial photographs. This information is unchecked
Red tint indicates areas in which only landmark buildings are shown



THIS MAP COMPLIES WITH NATIONAL MAP ACCURACY STANDARDS
FOR SALE BY U. S. GEOLOGICAL SURVEY, RESTON, VIRGINIA 22092
A FOLDER DESCRIBING TOPOGRAPHIC MAPS AND SYMBOLS IS AVAILABLE ON REQUEST



ROAD CLASSIFICATION	
Primary highway, hard surface	Light-duty road, hard or improved surface
Secondary highway, hard surface	Unimproved road
Interstate Route	U. S. Route
State Route	

USGS
Historical File
Topographic Division

LAUREL, FLA.
N2707.5-W8222.5/7.5

1973

AMS 4538 III NW-SERIES V847

MAR 2 1975
2965