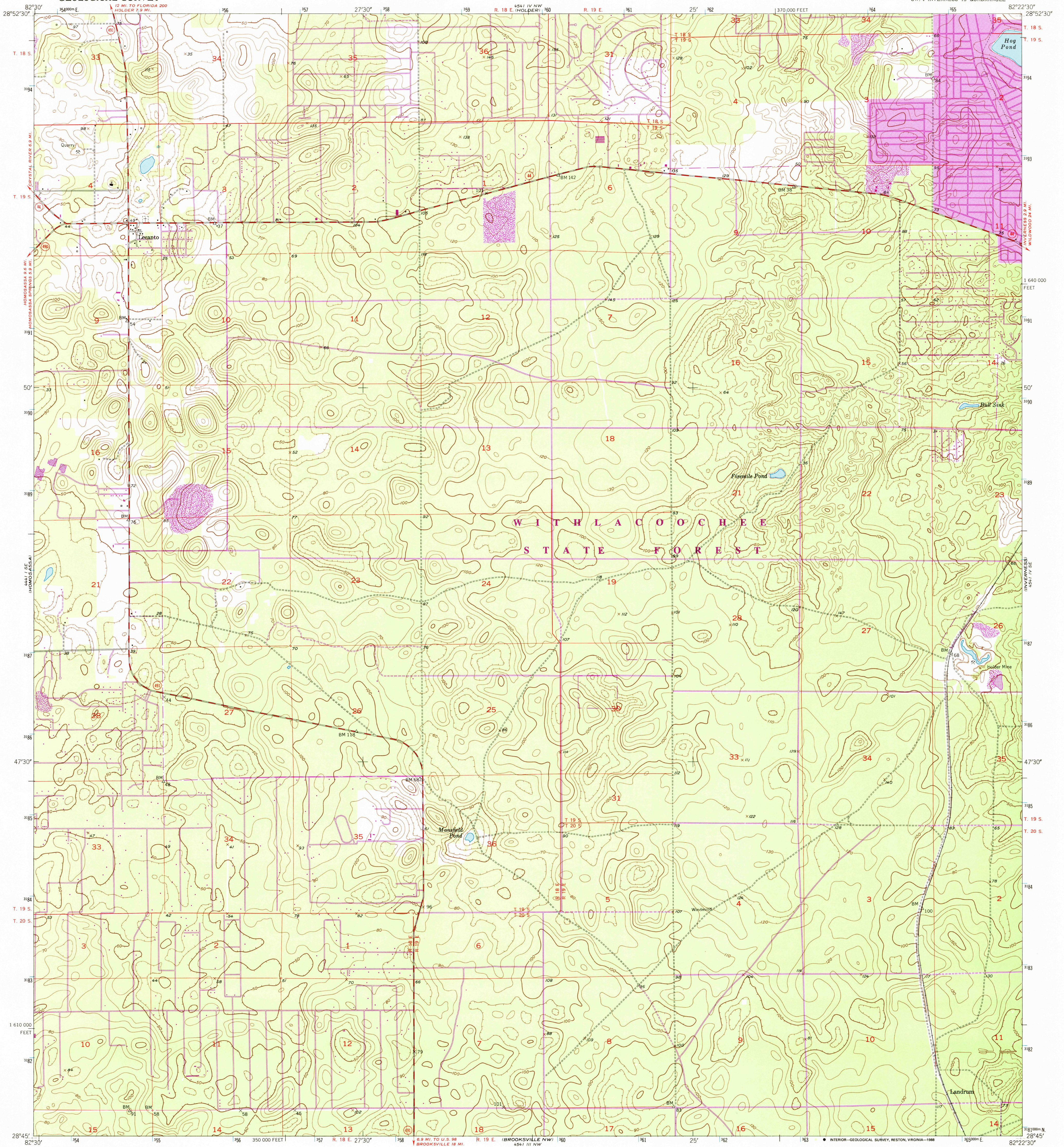


UNITED STATES  
DEPARTMENT OF THE INTERIOR  
GEOLOGICAL SURVEY

LECANTO QUADRANGLE  
FLORIDA-CITRUS CO.  
7.5 MINUTE SERIES (TOPOGRAPHIC)  
SW/4 INVERNESS 15' QUADRANGLE



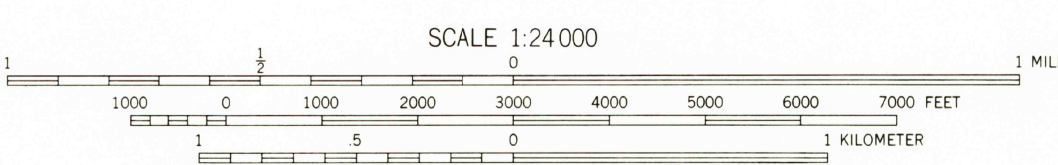
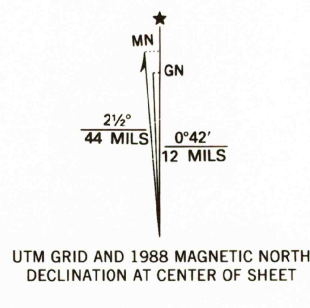
Mapped, edited, and published by the Geological Survey

Control by USGS and USC&GS

Topography from aerial photographs by Kelsh plotter and by plane-table surveys 1954. Aerial photographs taken 1951

Polyconic projection. 1927 North American datum  
10,000-foot grid based on Florida coordinate system,  
west zone  
1000-meter Universal Transverse Mercator grid ticks,  
zone 17, shown in blue

To place on the predicted North American Datum 1983,  
move the projection lines 26 meters south and  
16 meters west as shown by dashed corner ticks  
There may be private inholdings within the boundaries of  
the National or State reservations shown on this map  
Purple tint indicates extension of urban areas



CONTOUR INTERVAL 10 FEET  
NATIONAL GEODETIC VERTICAL DATUM OF 1929

THIS MAP COMPLIES WITH NATIONAL MAP ACCURACY STANDARDS  
FOR SALE BY U.S. GEOLOGICAL SURVEY  
DENVER, COLORADO 80225, OR RESTON, VIRGINIA 22092  
A FOLDER DESCRIBING TOPOGRAPHIC MAPS AND SYMBOLS IS AVAILABLE ON REQUEST



QUADRANGLE LOCATION

ROAD CLASSIFICATION	
Heavy-duty	4 LANE 16 LANE
Medium-duty	4 LANE 16 LANE
Light-duty	Unimproved dirt
U.S. Route	State Route

USGS NMD HISTORICAL MAP  
OCT 21 1988  
REC'D FILE COPY

LECANTO, FLA.  
SW/4 INVERNESS 15' QUADRANGLE  
28082-64-TF-024  
1954  
PHOTOREVISED 1988  
DMA 4541 IV SW-SERIES V847

Revision shown in purple compiled from aerial photographs  
taken 1984 and other sources. This information not  
field checked. Map edited 1988