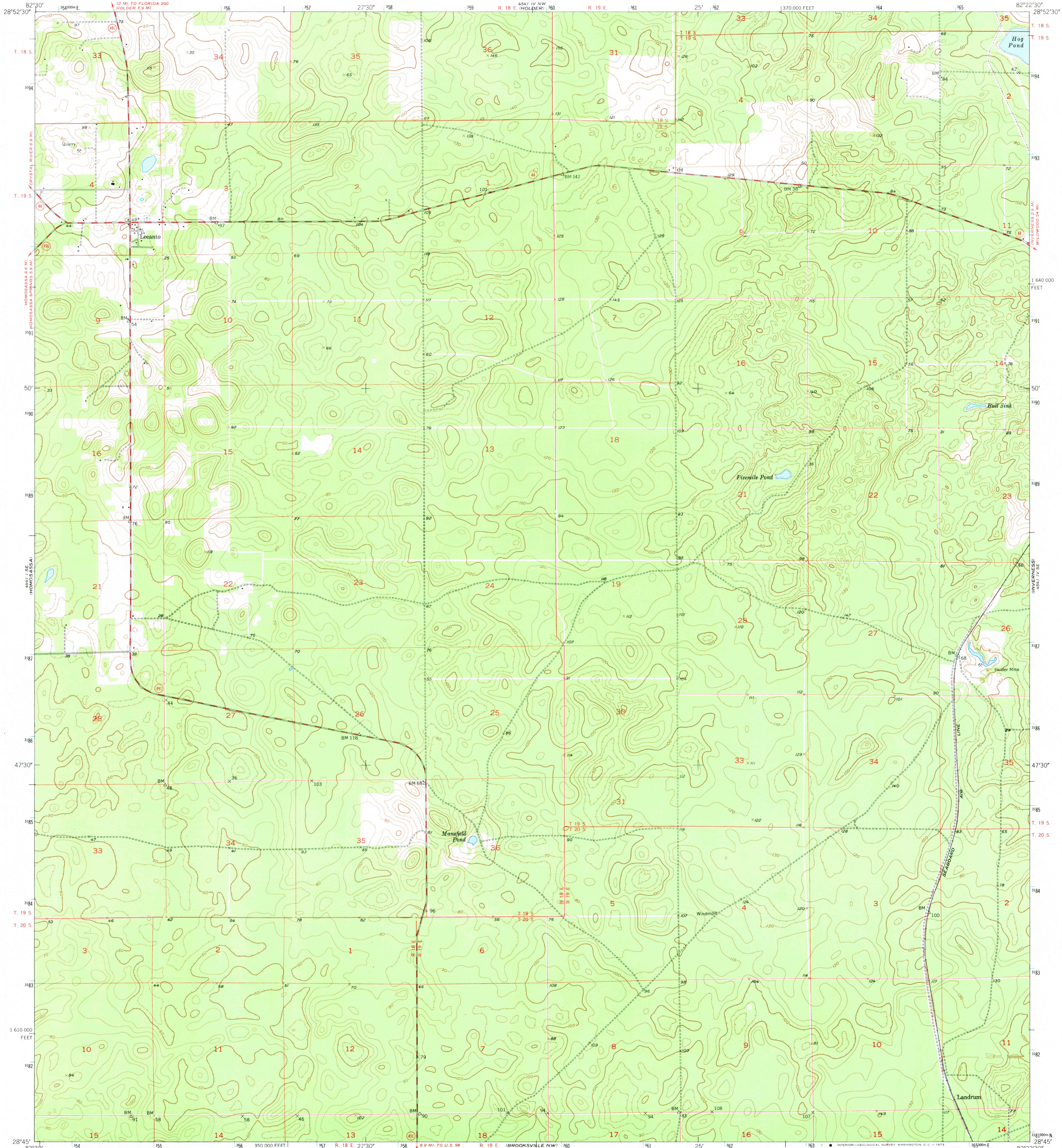
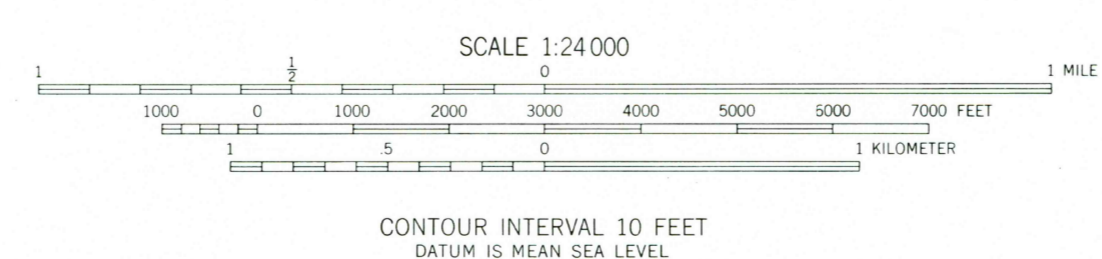
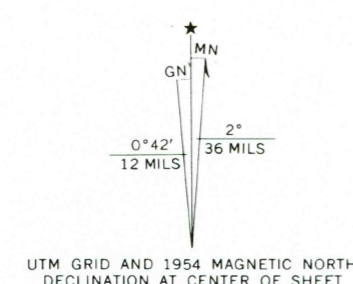


UNITED STATES
DEPARTMENT OF THE INTERIOR
GEOLOGICAL SURVEY

LECANTO QUADRANGLE
FLORIDA-CITRUS CO.
7.5 MINUTE SERIES (TOPOGRAPHIC)
SW/4 INVERNESS 15' QUADRANGLE



Mapped, edited, and published by the Geological Survey
Control by USGS and USC&GS
Topography from aerial photographs by Kelsch plottor and
by plane-table surveys 1954. Aerial photographs taken 1951
Polyconic projection. 1927 North American datum
10,000-foot grid based on Florida coordinate system,
west zone
1000-meter Universal Transverse Mercator grid ticks,
zone 17, shown in blue



CONTOUR INTERVAL 10 FEET
DATUM IS MEAN SEA LEVEL



ROAD CLASSIFICATION

Heavy-duty	4 LANE 16 LANE	Light-duty
Medium-duty	4 LANE 6 LANE	Unimproved dirt
U. S. Route	State Route	

THIS MAP COMPLIES WITH NATIONAL MAP ACCURACY STANDARDS
FOR SALE BY U. S. GEOLOGICAL SURVEY, WASHINGTON, D. C. 20242
A FOLDER DESCRIBING TOPOGRAPHIC MAPS AND SYMBOLS IS AVAILABLE ON REQUEST

LECANTO, FLA.
SW/4 INVERNESS 15' QUADRANGLE
N2845-W8222.5/7.5

1954
AMS 4541 IV SW-SERIES V847

OCT 9 1973