

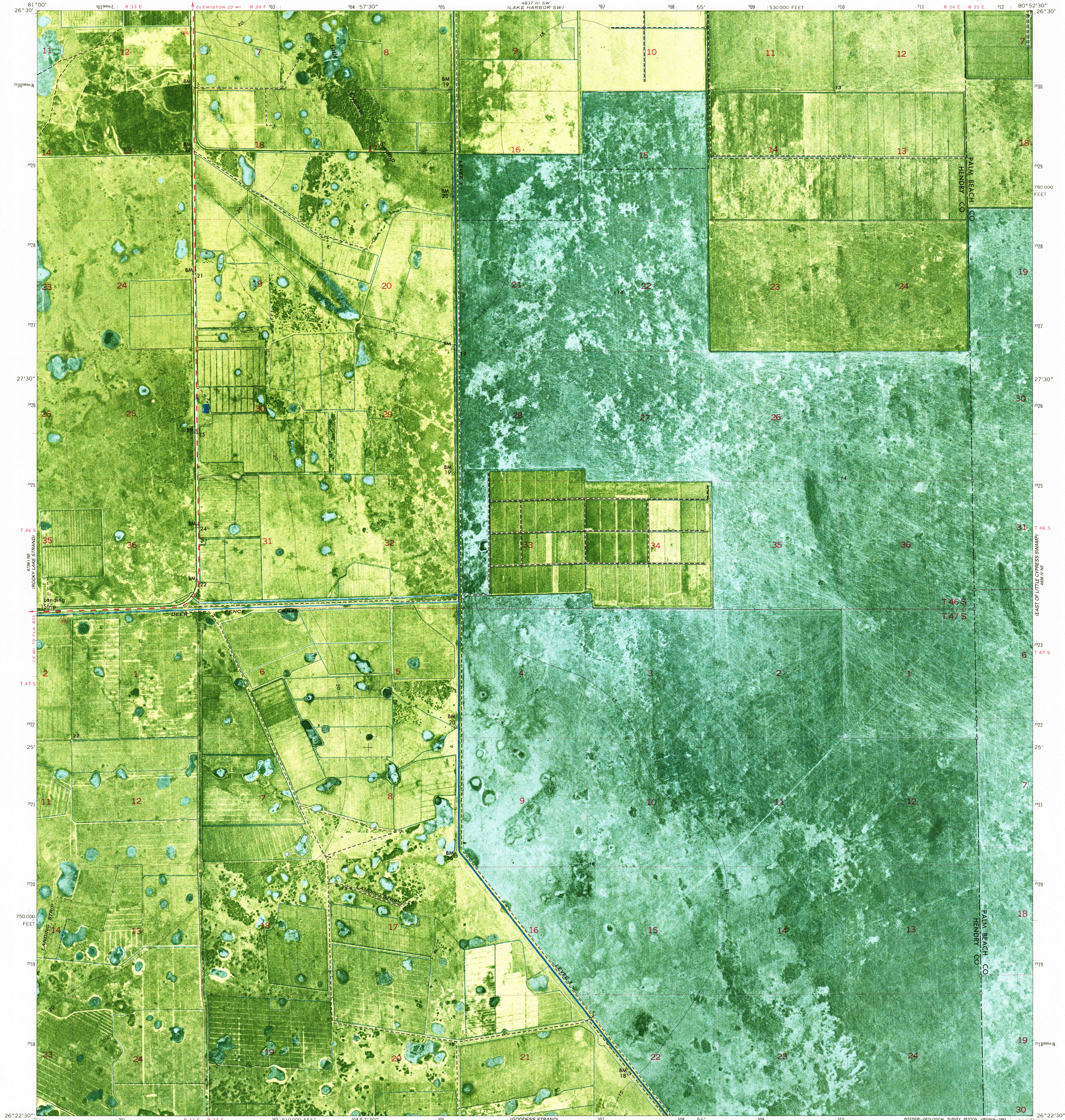
127°17'E
(POLARIS STAR)
STATION

UNITED STATES
DEPARTMENT OF THE INTERIOR
GEOLOGICAL SURVEY

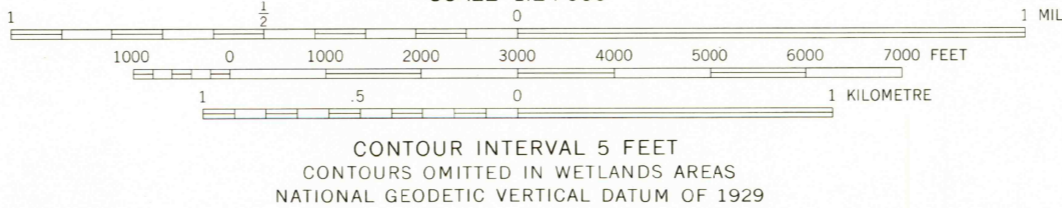
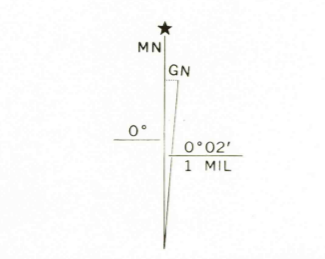
STATE OF FLORIDA

LITTLE CYPRESS SWAMP QUADRANGLE
FLORIDA
7.5 MINUTE SERIES ORTHOPHOTOMAP (TOPOGRAPHIC)

4837 III SE
(LAKE HARBOR SW)



Mapped, edited, and published by the Geological Survey
Control by USGS, NOS/NOAA, and USCE
Orthophotomap prepared from aerial photograph taken
January 16, 1971. Topography by planetable surveys 1974
Projection and 10,000-foot grid ticks: Florida coordinate
system, east zone (transverse Mercator)
1000-metre Universal Transverse Mercator grid ticks,
zone 17, shown in blue. 1927 North American datum
Dotted land lines established by private survey
The difference between 1927 North American Datum and North
American Datum of 1983 (NAD 83) for 7.5-minute intersections
is given in USGS Bulletin 1875. The NAD 83 is shown by
dashed corner ticks
Map photoinspected 1990
No major culture or drainage changes observed

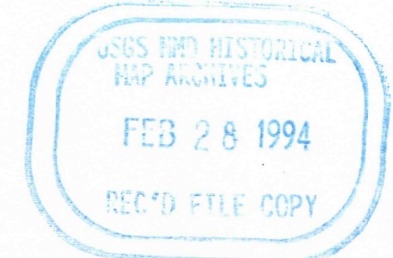


THIS MAP COMPLIES WITH NATIONAL MAP ACCURACY STANDARDS
FOR SALE BY U. S. GEOLOGICAL SURVEY
DENVER, COLORADO 80225, OR RESTON, VIRGINIA 22092
A FOLDER DESCRIBING TOPOGRAPHIC MAPS AND SYMBOLS IS AVAILABLE ON REQUEST



ROAD CLASSIFICATION

Primary highway, hard surface	Light-duty road, hard or improved surface
Secondary highway, hard surface	Unimproved road
Trails	
Interstate Route	U. S. Route
	State Route



LITTLE CYPRESS SWAMP, FLA.
(FORMERLY EVERGLADES 2 NW)
26080-D8-OM 024
1974
PHOTOINSPECTED 1990
DMA 4836 IV NW - SERIES V8470

(COW BONE ISLAND)
4781 IV SE

4837 III SE
(LAKE HARBOR SW)