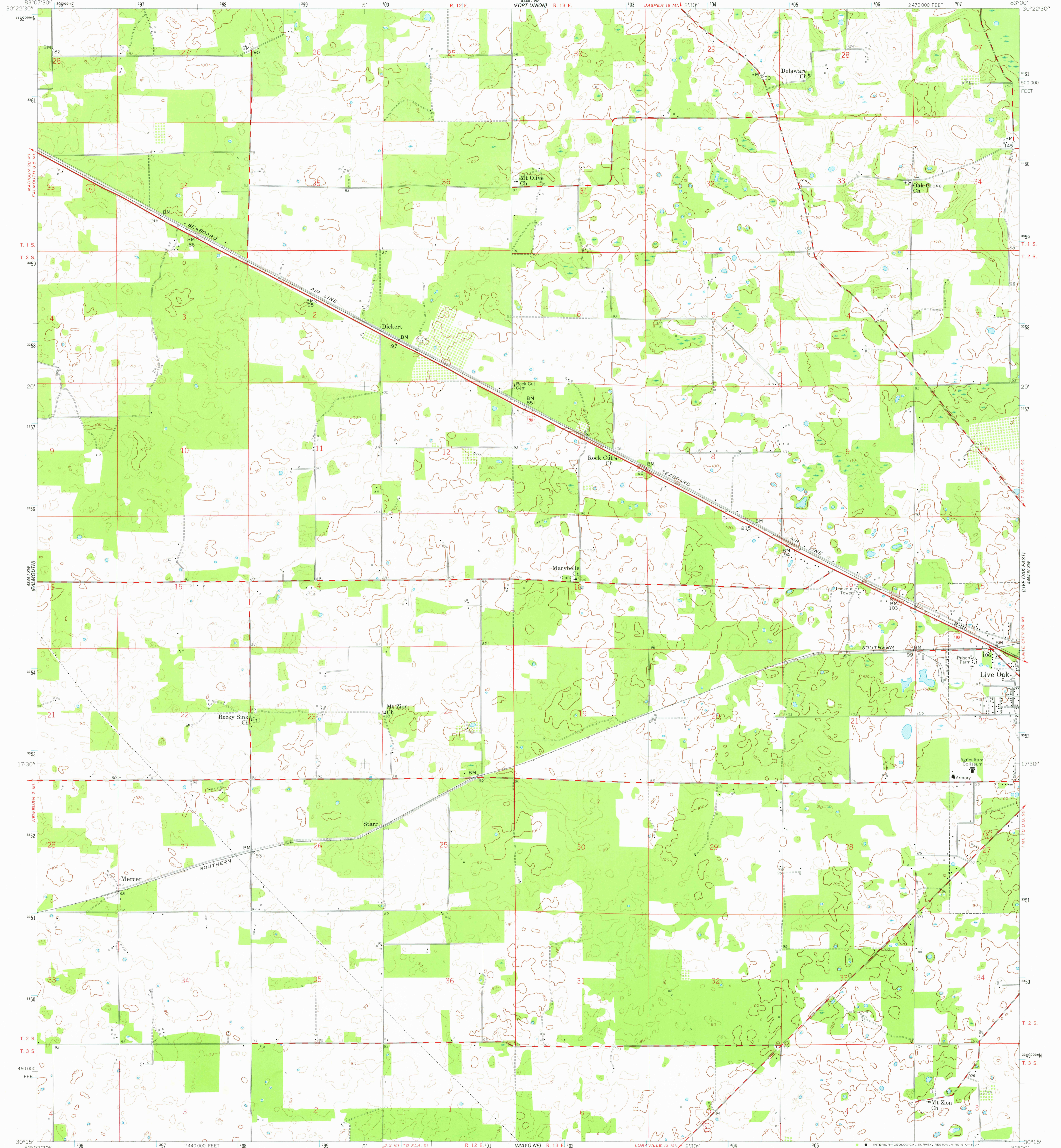
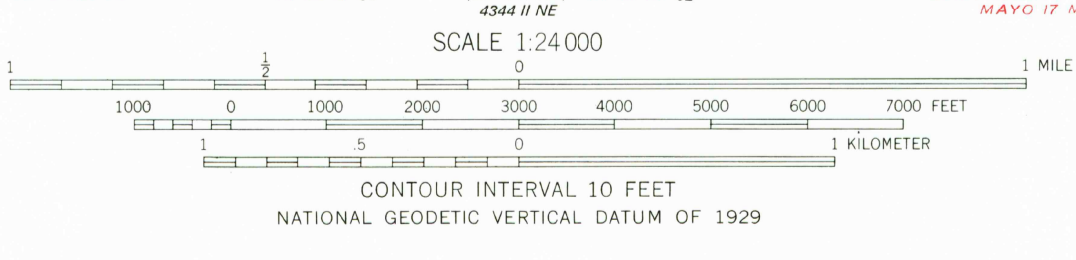
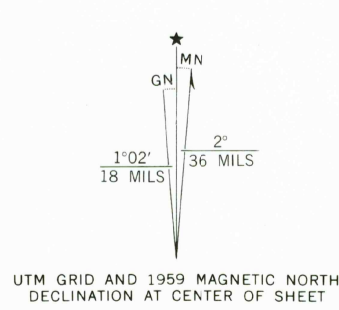


UNCLASSIFIED



Mapped, edited, and published by the Geological Survey  
Control by USGS and USC&GS  
Topography from aerial photographs by photogrammetric methods  
Aerial photographs taken 1952. Field check 1959  
Polyconic projection. 1927 North American datum  
10,000-foot grid based on Florida coordinate system, north zone  
1000-meter Universal Transverse Mercator grid ticks,  
zone 17, shown in blue  
Unchecked elevations are shown in brown



CONTOUR INTERVAL 10 FEET  
NATIONAL GEODETTIC VERTICAL DATUM OF 1929



ROAD CLASSIFICATION

Heavy-duty	Light-duty
Medium-duty	Unimproved dirt
U. S. Route	Slate Route

THIS MAP COMPLIES WITH NATIONAL MAP ACCURACY STANDARDS  
FOR SALE BY U. S. GEOLOGICAL SURVEY, RESTON, VIRGINIA 22092.  
A FOLDER DESCRIBING TOPOGRAPHIC MAPS AND SYMBOLS IS AVAILABLE ON REQUEST

USGS  
Historical File  
Topographic Division

LIVE OAK WEST, FLA.  
N 3015—W 8300/7.5  
1959 AUG 26 1977  
AMS 4344 1 SE—SERIES V847

1800