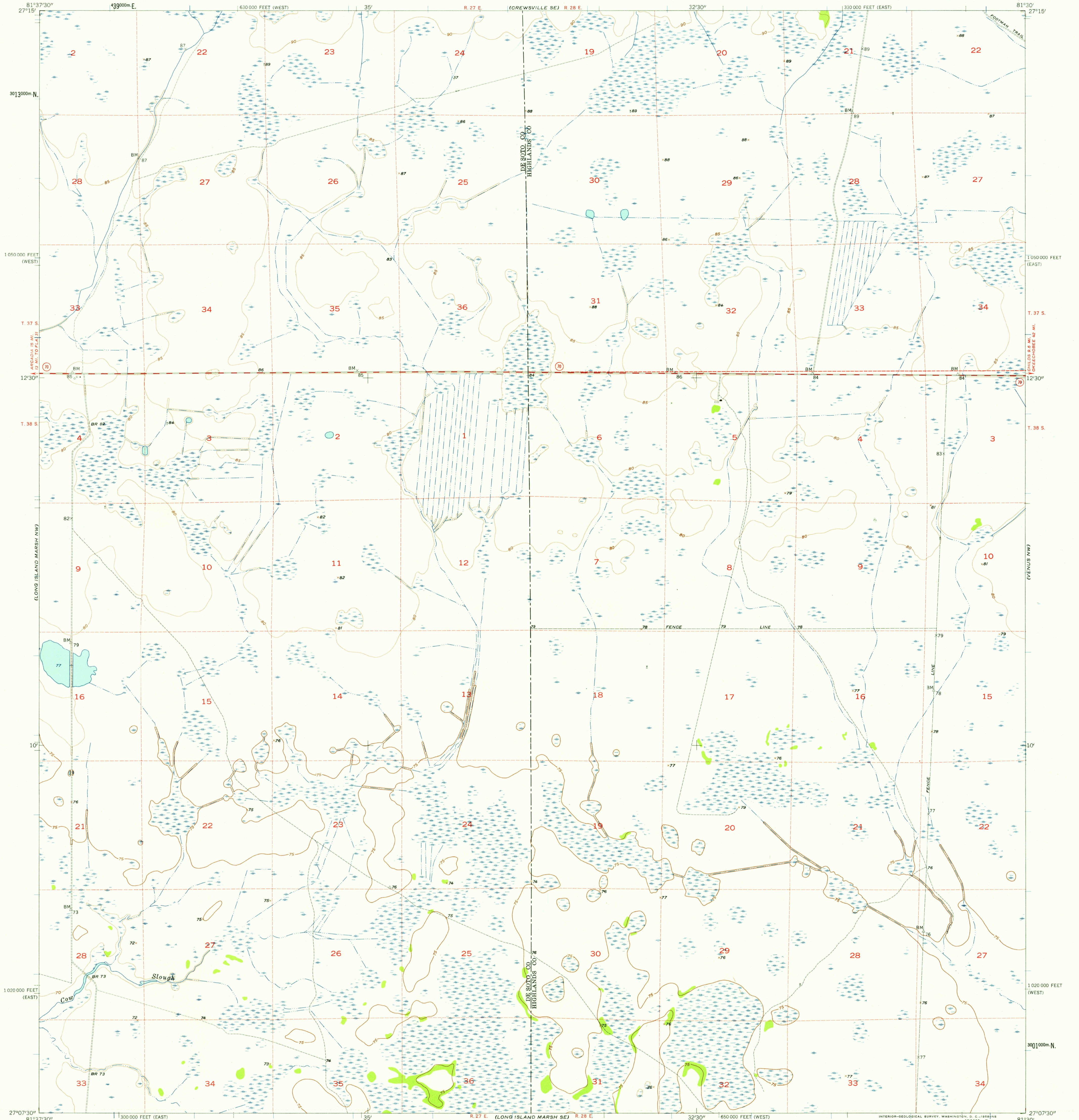


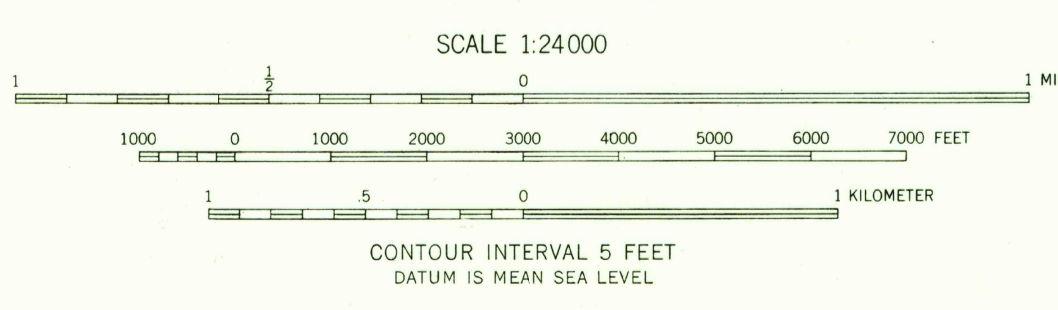
CREWVILLE SW

LAKE JUNE IN WINTER



Mapped, edited, and published by the Geological Survey
Control by USGS and USC&GS
Culture and drainage in part compiled from aerial photographs
taken 1952. Topography by planetable surveys 1957
Polyconic projection. 1927 North American datum
10,000-foot grids based on Florida coordinate system,
east and west zones
1000-meter Universal Transverse Mercator grid ticks,
zone 17, shown in blue
Dashed lend lines indicate approximate locations

15°
TRUE NORTH
MAGNETIC NORTH
APPROXIMATE MEAN
DECLINATION, 1957



USGS
Historical File
Topographic Division



U.S.G.S.
FILE COPY
TOPOGRAPHIC DIVISION

ROAD CLASSIFICATION
Medium-duty — Unimproved dirt —
State Route

LONG ISLAND MARSH NE, FLA.
N2707.5—W8130/7.5

1957

THIS MAP COMPLIES WITH NATIONAL MAP ACCURACY STANDARDS
FOR SALE BY U. S. GEOLOGICAL SURVEY, WASHINGTON 25, D. C.
A FOLDER DESCRIBING TOPOGRAPHIC MAPS AND SYMBOLS IS AVAILABLE ON REQUEST

JUN 20 1958
1895