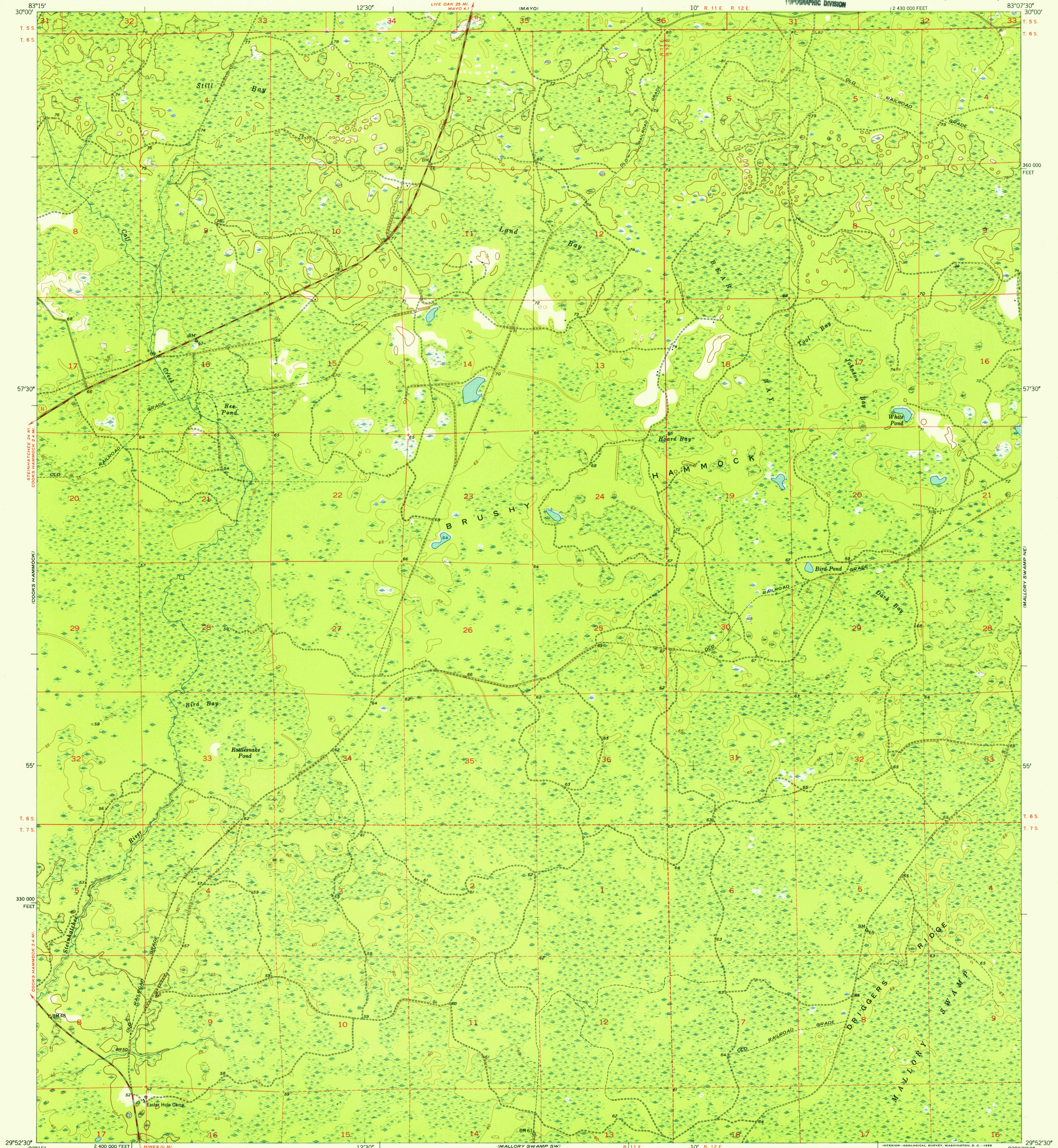
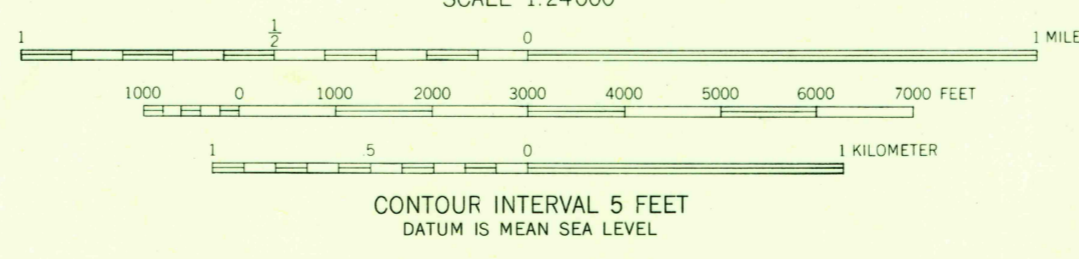
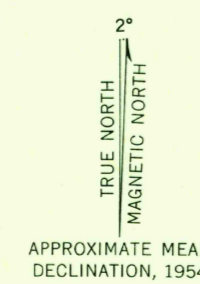


UNITED STATES
DEPARTMENT OF THE INTERIOR
GEOLOGICAL SURVEY

U.S.G.S. FILE COPY
TOPOGRAPHIC DIVISION
MALLORY SWAMP NW QUADRANGLE
FLORIDA-LAFAYETTE CO.
7.5 MINUTE SERIES (TOPOGRAPHIC)
1:243000 FEET



Mapped, edited, and published by the Geological Survey
Control by USGS and USC&GS
Culture and drainage in part compiled from aerial photographs taken 1951. Topography by plane-table surveys 1954
Polyconic projection. 1927 North American datum
10,000-foot grid based on Florida coordinate system, north zone
Dashed land lines indicate approximate locations



ROAD CLASSIFICATION

Heavy-duty	4 LANE 6 LANE	Light-duty	2 LANE 4 LANE
Medium-duty	4 LANE 6 LANE	Unimproved dirt	---
U.S. Route	⊠	State Route	⊙

THIS MAP COMPLIES WITH NATIONAL MAP ACCURACY STANDARDS
FOR SALE BY U.S. GEOLOGICAL SURVEY, WASHINGTON 25, D. C.
A FOLDER DESCRIBING TOPOGRAPHIC MAPS AND SYMBOLS IS AVAILABLE ON REQUEST

U.S.G.S. FILE COPY
TOPOGRAPHIC DIVISION

MALLORY SWAMP NW, FLA.
N2952.5-W8307.5/7.5

1954 NOV 2 1955