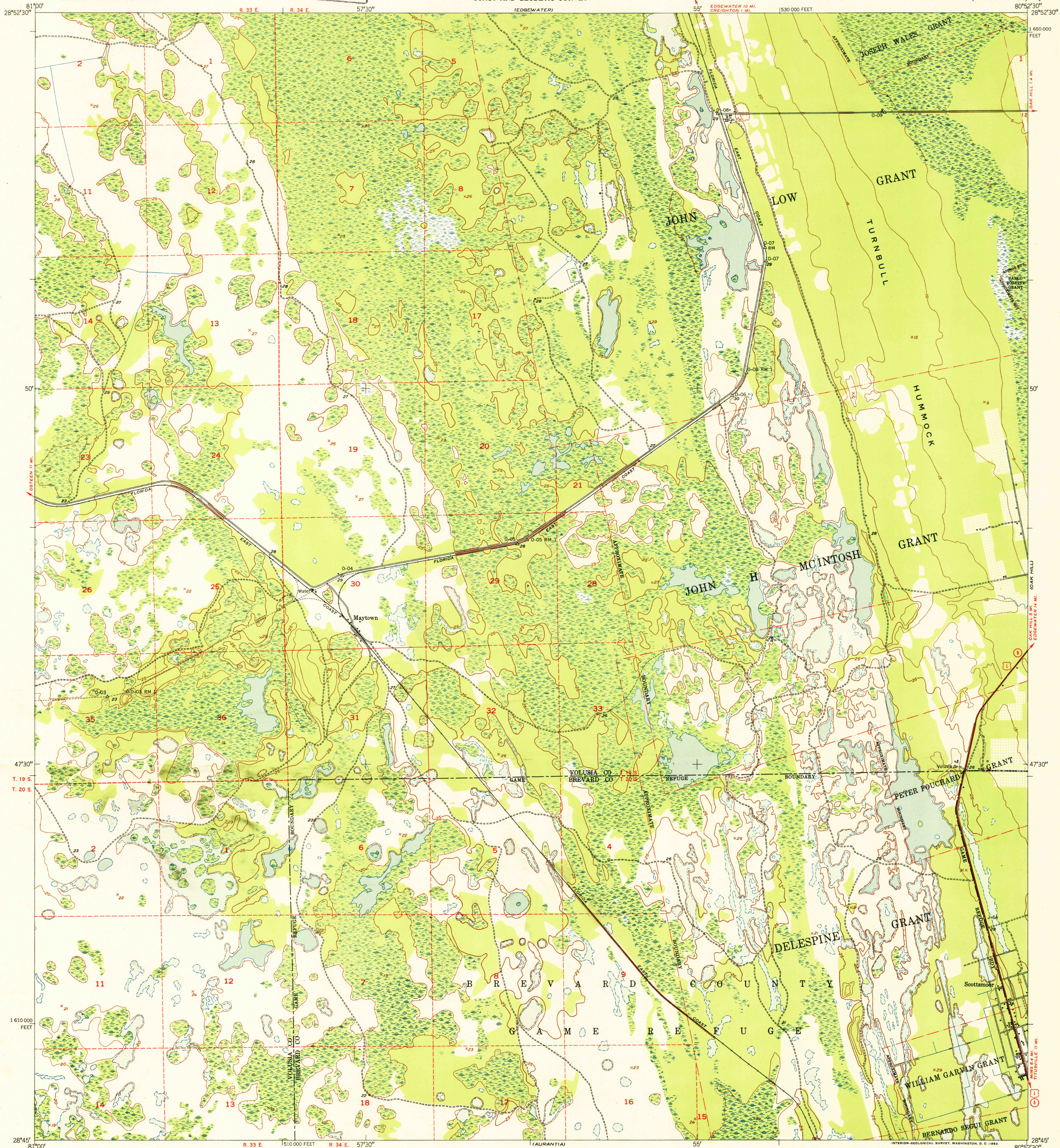


U.S.G.S.
FILE COPY
Inspection and Editing



Mapped by the U. S. Coast & Geodetic Survey
Edited and published by the Geological Survey

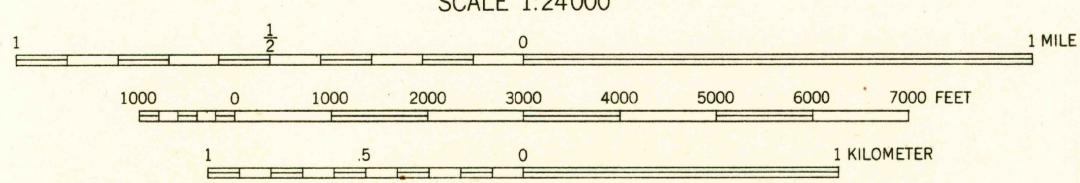
Control by USC&GS

Culture and drainage in part compiled from
aerial photographs taken 1948
Topography by plane-table methods 1949. Field check 1950

Polyconic projection. 1927 North American datum
10,000-foot grid based on Florida coordinate system,
east zone

Dashed land lines indicate approximate location

TRUE NORTH
MAGNETIC NORTH
APPROXIMATE MEAN
DECLINATION, 1950



SCALE 1:24000

CONTOUR INTERVAL 5 FEET
DATUM IS MEAN SEA LEVEL

USGS
Historical File
Topographic Division

ROAD CLASSIFICATION
Heavy-duty **4 LANE 16 LANE** Light-duty **2 LANE 16 LANE**
Medium-duty **4 LANE 16 LANE** Unimproved dirt **-----**
U. S. Route **○** State Route **○**

MAYTOWN, FLA.
N2845-W8052.5/7.5

1950

THIS MAP COMPLIES WITH NATIONAL MAP ACCURACY STANDARDS
FOR SALE BY U. S. GEOLOGICAL SURVEY, WASHINGTON 25, D. C.
A FOLDER DESCRIBING TOPOGRAPHIC MAPS AND SYMBOLS IS AVAILABLE ON REQUEST

U.S.G.S.
FILE COPY
Inspection and Editing