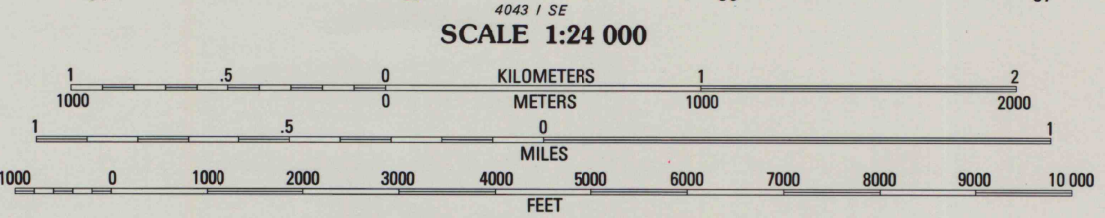
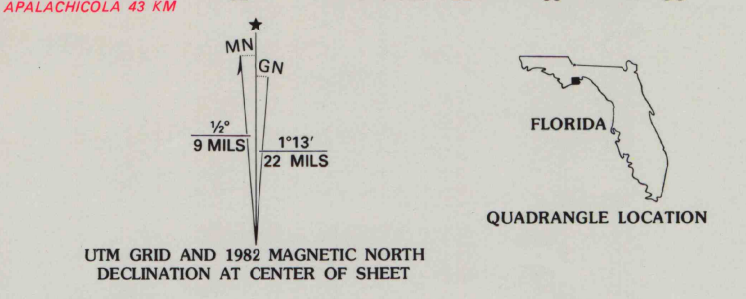
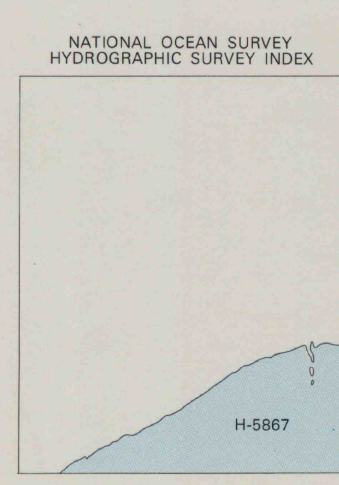


Produced by the Geological Survey and the National Ocean Survey
Control by USGS and NOS/NOAA
Orthophotomaps prepared from aerial photograph taken January 10, 1976. Topography by photogrammetric methods from aerial photographs taken January 1975. Field checked 1976. Map edited 1982.
Supersedes topographic map dated 1945.
Bathymetry compiled by the National Ocean Survey from tide-coordinated hydrographic surveys. Soundings compiled from NOS chart 11405.
This information is not intended for navigational purposes.
Mean low water (dotted) line and mean high water (solid) line compiled by NOS from tide-coordinated aerial photographs. Apparent shoreline (outer edge of vegetation) shown by photogrammetry.
Projection and 10,000-foot grid ticks: Florida coordinate system, north zone (Lambert conformal conic). 1000-meter Universal Transverse Mercator grid, zone 16 1927 North American Datum.
To place on the predicted North American Datum 1983 move the projection lines 20 meter south and 9 meters west as shown by dashed corner ticks.
Dotted land lines established by private subdivision of the Forbes Purchase.
There may be private inholdings within the boundaries of the National or State reservations shown on this map.



CONTOUR INTERVAL 2 METERS
SUPPLEMENTARY CONTOUR INTERVAL 1 METER
NATIONAL GEODETIC VERTICAL DATUM OF 1929
CONTROL ELEVATIONS SHOWN TO THE NEAREST 0.1 METER
OTHER ELEVATIONS SHOWN TO THE NEAREST 0.5 METER
BATHYMETRIC CONTOUR INTERVAL 1 METER WITH SUPPLEMENTARY 0.5 METER CONTOURS—GULF COAST LOW WATER DATUM
THE RELATIONSHIP BETWEEN THE TWO DATUMS IS VARIABLE
THE MEAN RANGE OF TIDE IS APPROXIMATELY 0.8 METERS

BASE MAP COMPLIES WITH NATIONAL MAP ACCURACY STANDARDS
BATHYMETRIC SURVEY DATA COMPLIES WITH INTERNATIONAL HYDROGRAPHIC ORGANIZATION (IHO) SPECIAL PUBLICATION 44 ACCURACY STANDARDS AND/OR STANDARDS USED AT THE DATE OF THE SURVEY
FOR SALE BY THE GEOLOGICAL SURVEY, RESTON, VIRGINIA 22092
AND NATIONAL OCEAN SURVEY, ROCKVILLE, MARYLAND 20852
A FOLDER DESCRIBING TOPOGRAPHIC MAPS AVAILABLE ON REQUEST



ROAD CLASSIFICATION

Primary highway, hard surface
Secondary highway, hard surface
Trails
Interstate Route
U. S. Route
State Route
County Route

Light-duty road, hard or improved surface
Unimproved road

CONTOURS AND ELEVATIONS IN METERS

MC INTYRE, FLA.
N2952.5-W8430.7.5
1982
DMA 4043 I NE-SERIES V8470