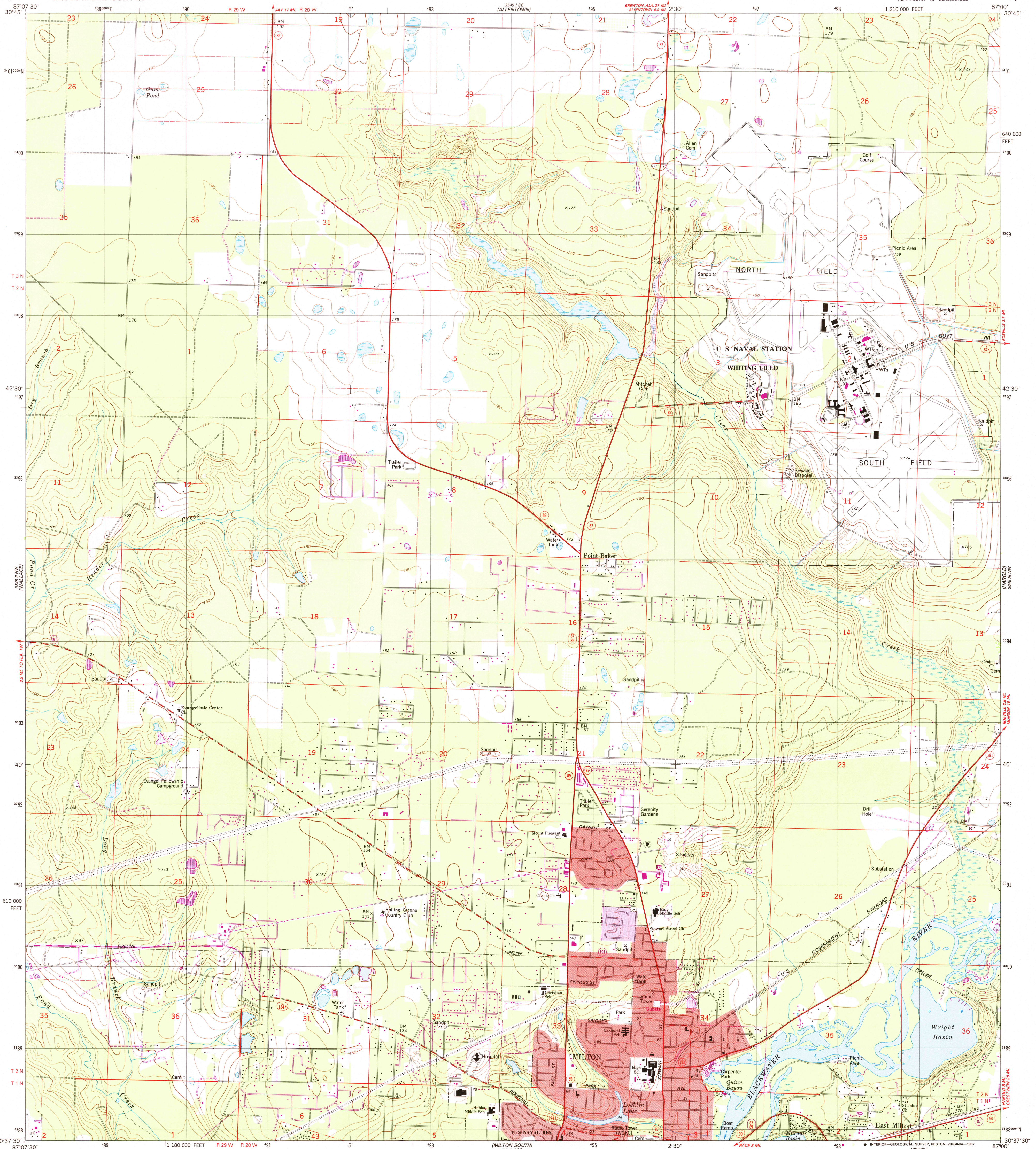
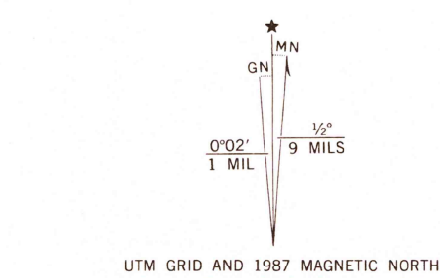


3545 15' NE (CONTOUR)



Mapped, edited, and published by the Geological Survey. Control by USGS, NOS/NOAA, and Florida Department of Transportation. Topography by photogrammetric methods from aerial photographs taken February 1974. Field checked 1974. Map edited 1978.



SCALE 1:24 000

CONTOUR INTERVAL 10 FEET NATIONAL GEODETIC VERTICAL DATUM OF 1929 SOUNDINGS IN FEET—DATUM IS MEAN LOW WATER THE RELATIONSHIP BETWEEN THE TWO DATUMS IS VARIABLE SHORELINE SHOWN REPRESENTS THE APPROXIMATE LINE OF MEAN HIGH WATER THE MEAN RANGE OF TIDE IS APPROXIMATELY 1.5 FEET

THIS MAP COMPLIES WITH NATIONAL MAP ACCURACY STANDARDS FOR SALE BY U.S. GEOLOGICAL SURVEY DENVER, COLORADO 80225, OR RESTON, VIRGINIA 22092 A FOLDER DESCRIBING TOPOGRAPHIC MAPS AND SYMBOLS IS AVAILABLE ON REQUEST

JUN 29 1988 REGD FILE COPY

Revisions shown in purple and woodland compiled in cooperation with State of Florida agencies from aerial photographs taken 1984 and other sources. This information not field checked. Map edited 1987. Purple tint indicates extension of urban area.

ROAD CLASSIFICATION table with symbols for Primary highway, Secondary highway, Interstate Route, U.S. Route, State Route, Light-duty road, and Unimproved road.

MILTON NORTH, FLA. NE/4 MILTON 15' QUADRANGLE 30087-F1-TF-024

1978 PHOTOREVISED 1987 DMA 3545 11 NE—SERIES 5847

3545 15' SW (ISOMERIC HILL)

3545 15' NW (HARDY)

3545 15' W (WINDY CASH)

3545 15' SW (WINDY CASH)

3545 15' SW (WINDY CASH)

3545 15' SW (WINDY CASH)

3545 15' SW (WINDY CASH)