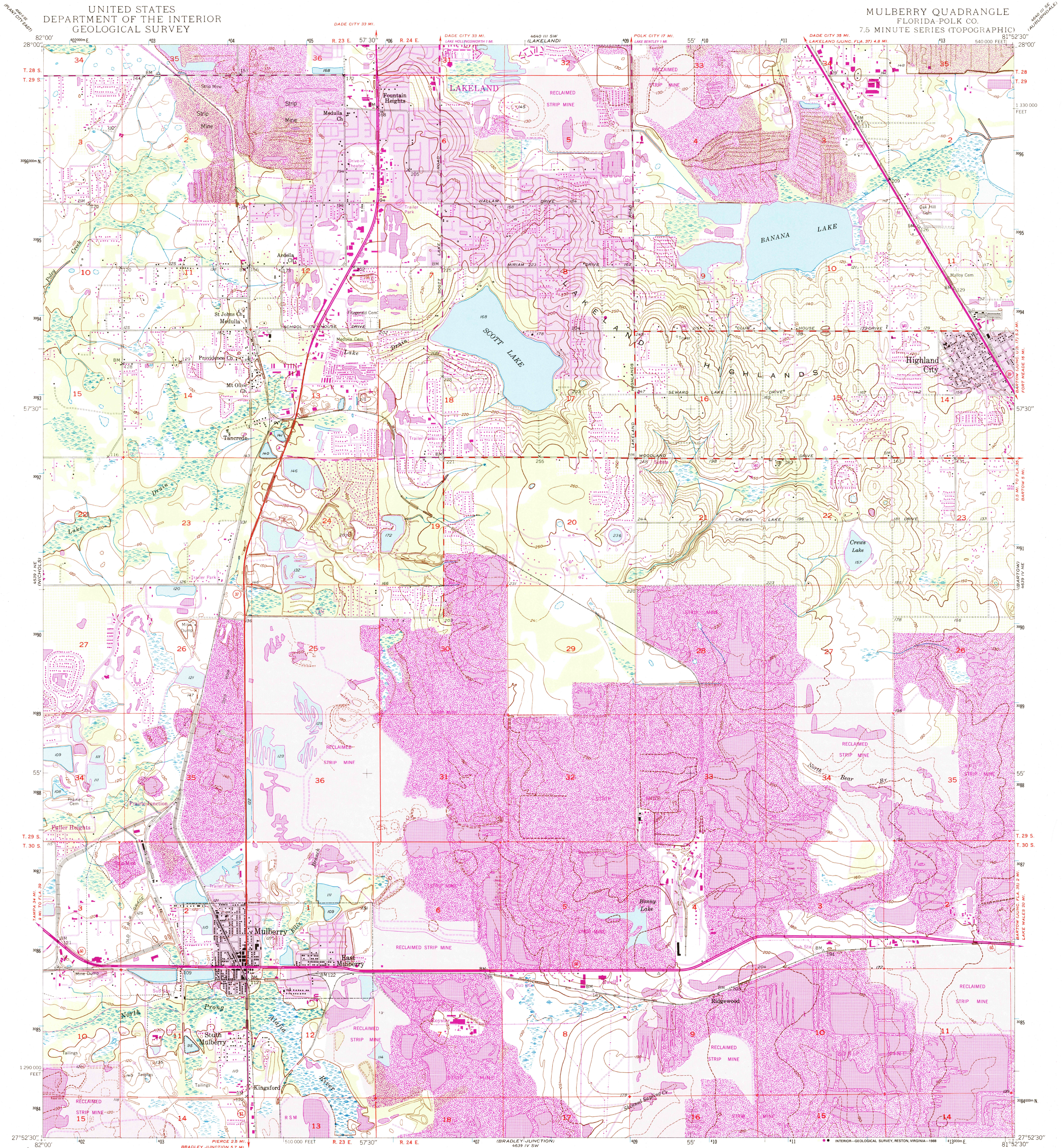


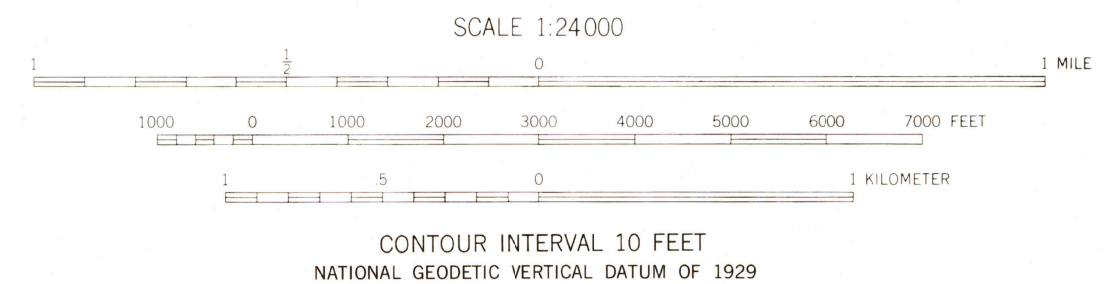
UNITED STATES
DEPARTMENT OF THE INTERIOR
GEOLOGICAL SURVEY

MULBERRY QUADRANGLE
FLORIDA-POLK CO.
7.5 MINUTE SERIES (TOPOGRAPHIC)



Maped, edited, and published by the Geological Survey
Control by USGS, USC&GS, and Florida Geodetic Survey
Culture and drainage in part compiled from
aerial photographs taken 1941
Topography by plane-table methods 1949
Polyconic projection. 1927 North American datum
10,000-foot grid based on Florida coordinate system,
west zone
1000-meter Universal Transverse Mercator grid ticks,
zone 17, shown in blue
To place on the predicted North American Datum 1983 move
the projection lines 29 meters south and 18 meters west
as shown by dashed corner ticks
Purple tint indicates extension of urban areas
Light purple tint indicates reclaimed strip mine areas
Dashed contours in strip mine areas represent
conditions before being mined

Revisions shown in purple and woodland compiled in cooperation
with State of Florida agencies from aerial photographs taken
1984 and other sources. This information not field checked
Map edited 1987



ROAD CLASSIFICATION

Primary highway, hard surface	Light-duty road, hard or improved surface
Secondary highway, hard surface	Unimproved road
Interstate Route	U. S. Route
	State Route

UTM GRID AND 1987 MAGNETIC NORTH
DECLINATION AT CENTER OF SHEET

THIS MAP COMPLIES WITH NATIONAL MAP ACCURACY STANDARDS
FOR SALE BY U. S. GEOLOGICAL SURVEY
DENVER, COLORADO 80225 OR RESTON, VIRGINIA 22092
A FOLDER DESCRIBING TOPOGRAPHIC MAPS AND SYMBOLS IS AVAILABLE ON REQUEST

QUADRANGLE LOCATION

FLORIDA

MAY 05 1989

REC'D FILE COPY

MULBERRY, FLA.
27081-H8-TF-024

1949
PHOTOREVISED 1987
DMA 4639 IV NW-SERIES V847