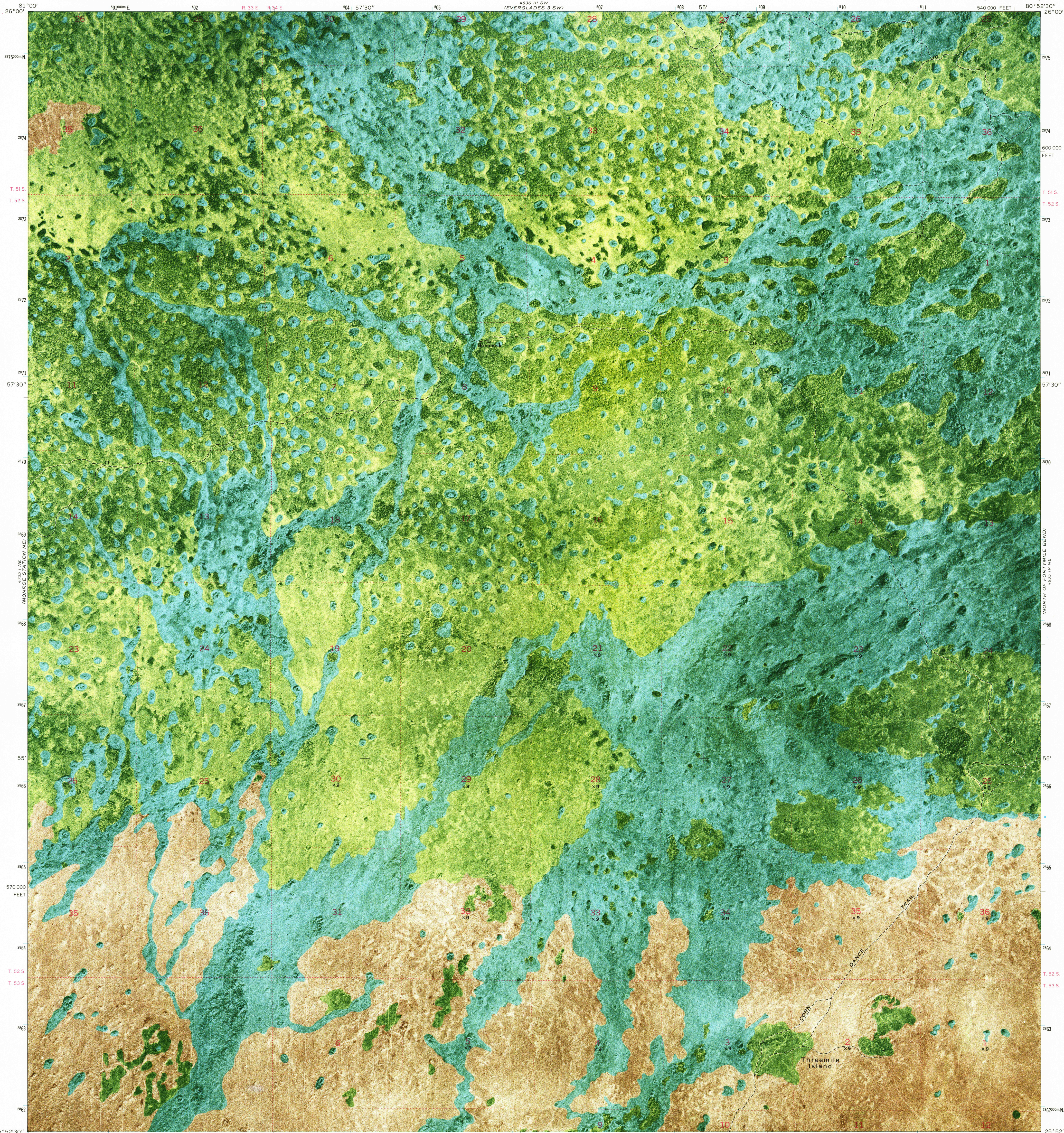
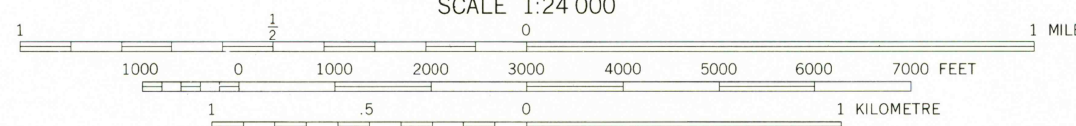
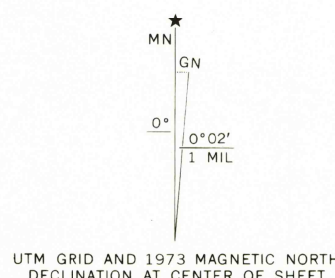


UNITED STATES
DEPARTMENT OF THE INTERIOR
GEOLOGICAL SURVEY

NORTH OF FIFTYMILE BEND QUADRANGLE
FLORIDA—COLLIER CO.
7.5 MINUTE SERIES ORTHOPHOTOMAP (TOPOGRAPHIC)



Mapped, edited, and published by the Geological Survey
Control by USGS and USC&GS
Orthophotomap prepared from aerial photograph taken
January 16, 1971. Topography by planetable surveys 1973
Projection and 10,000-foot grid ticks: Florida coordinate
system, east zone (transverse Mercator)
1000-metre Universal Transverse Mercator grid ticks,
zone 17, shown in blue. 1927 North American datum
Dotted land lines established by private survey



ROAD CLASSIFICATION
Primary highway, hard surface
Secondary highway, hard surface
Trails
Interstate Route
U. S. Route
State Route
Light-duty road, hard or improved surface
Unimproved road

NORTH OF FIFTYMILE BEND, FLA.
N2552.5—W8052.5/7.5

1973

AMS 4835 IV NW—SERIES V8470

THIS MAP COMPLIES WITH NATIONAL MAP ACCURACY STANDARDS
FOR SALE BY U. S. GEOLOGICAL SURVEY, RESTON, VIRGINIA 22092
A FOLDER DESCRIBING TOPOGRAPHIC MAPS AND SYMBOLS IS AVAILABLE ON REQUEST