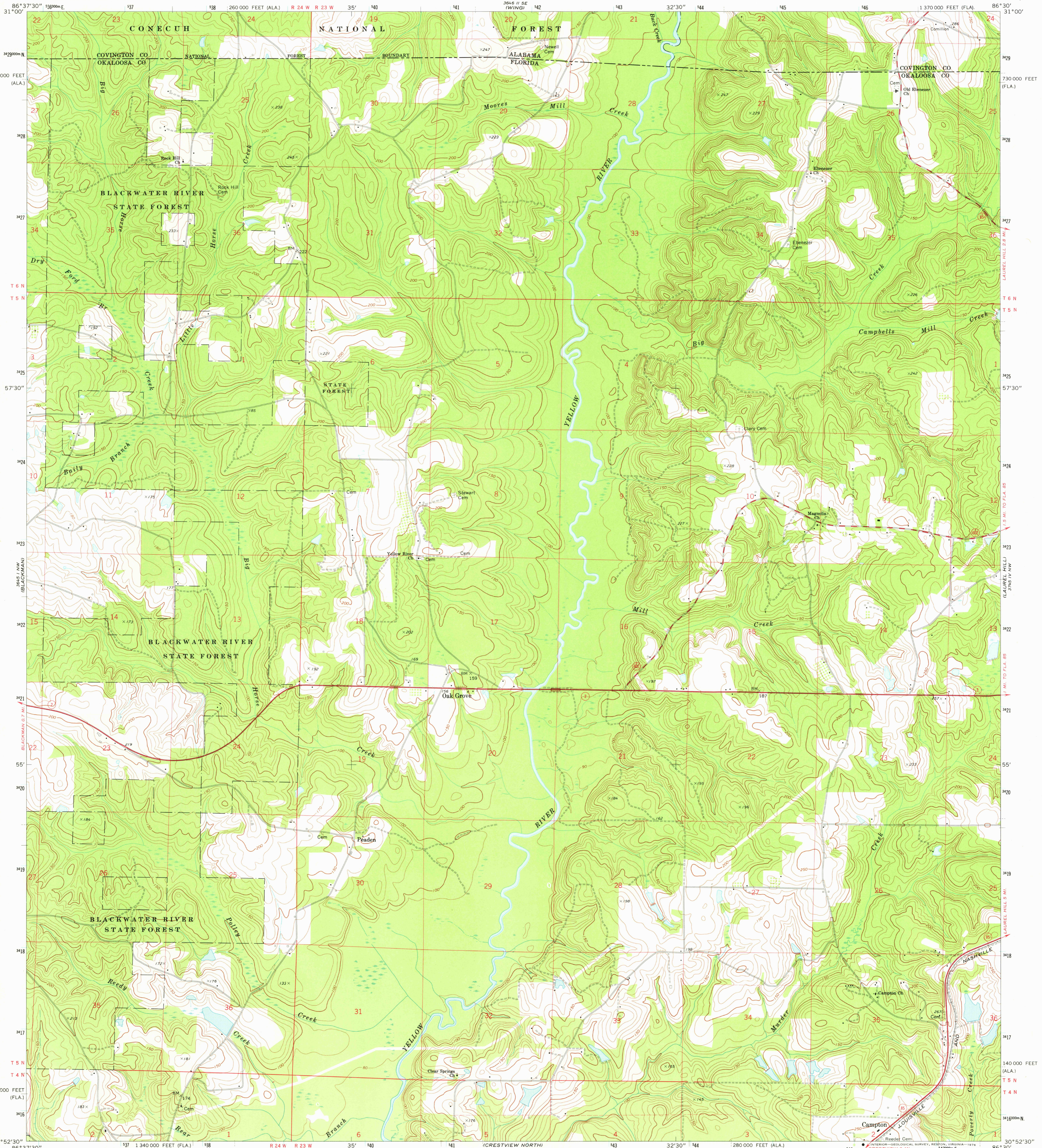
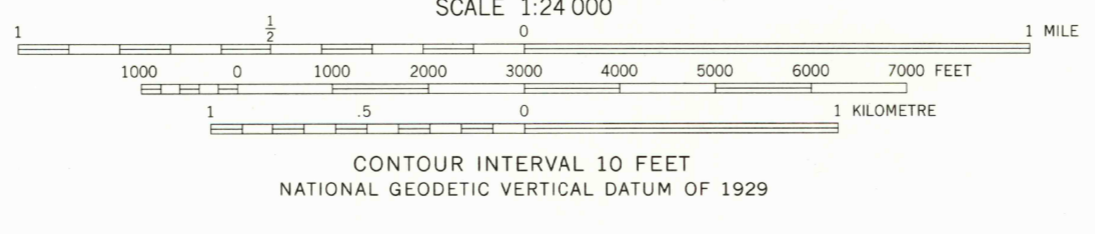
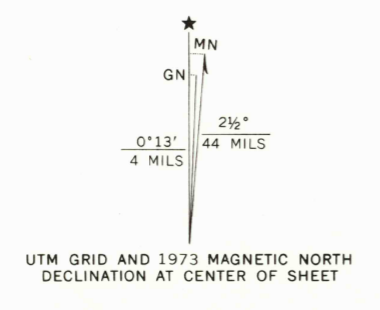


31° 52' 30" N  
86° 37' 30" W  
BRADLEY

31° 52' 30" N  
86° 37' 30" W  
GORDON



Mapped, edited, and published by the Geological Survey  
Control by USGS and NOS/NOAA  
Topography by photogrammetric methods from aerial photographs taken March 1973. Field checked 1973  
Projection: Florida coordinate system (Lambert conformal conic)  
10,000-foot grid ticks based on Florida coordinate system, north zone and Alabama coordinate system, east zone  
1000-metre Universal Transverse Mercator grid ticks, zone 16, shown in blue. 1927 North American datum  
Fine red dashed lines indicate selected fence and field lines where generally visible on aerial photographs. This information is unchecked



ROAD CLASSIFICATION

Primary highway, hard surface	Light-duty road, hard or improved surface
Secondary highway, hard surface	Unimproved road
Interstate Route	U. S. Route
	State Route

OAK GROVE, FLA. - ALA.  
NE/4 CRESTVIEW 15' QUADRANGLE  
N3052.5-W8630/7.5

THIS MAP COMPLIES WITH NATIONAL MAP ACCURACY STANDARDS  
FOR SALE BY U. S. GEOLOGICAL SURVEY, RESTON, VIRGINIA 22092  
A FOLDER DESCRIBING TOPOGRAPHIC MAPS AND SYMBOLS IS AVAILABLE ON REQUEST