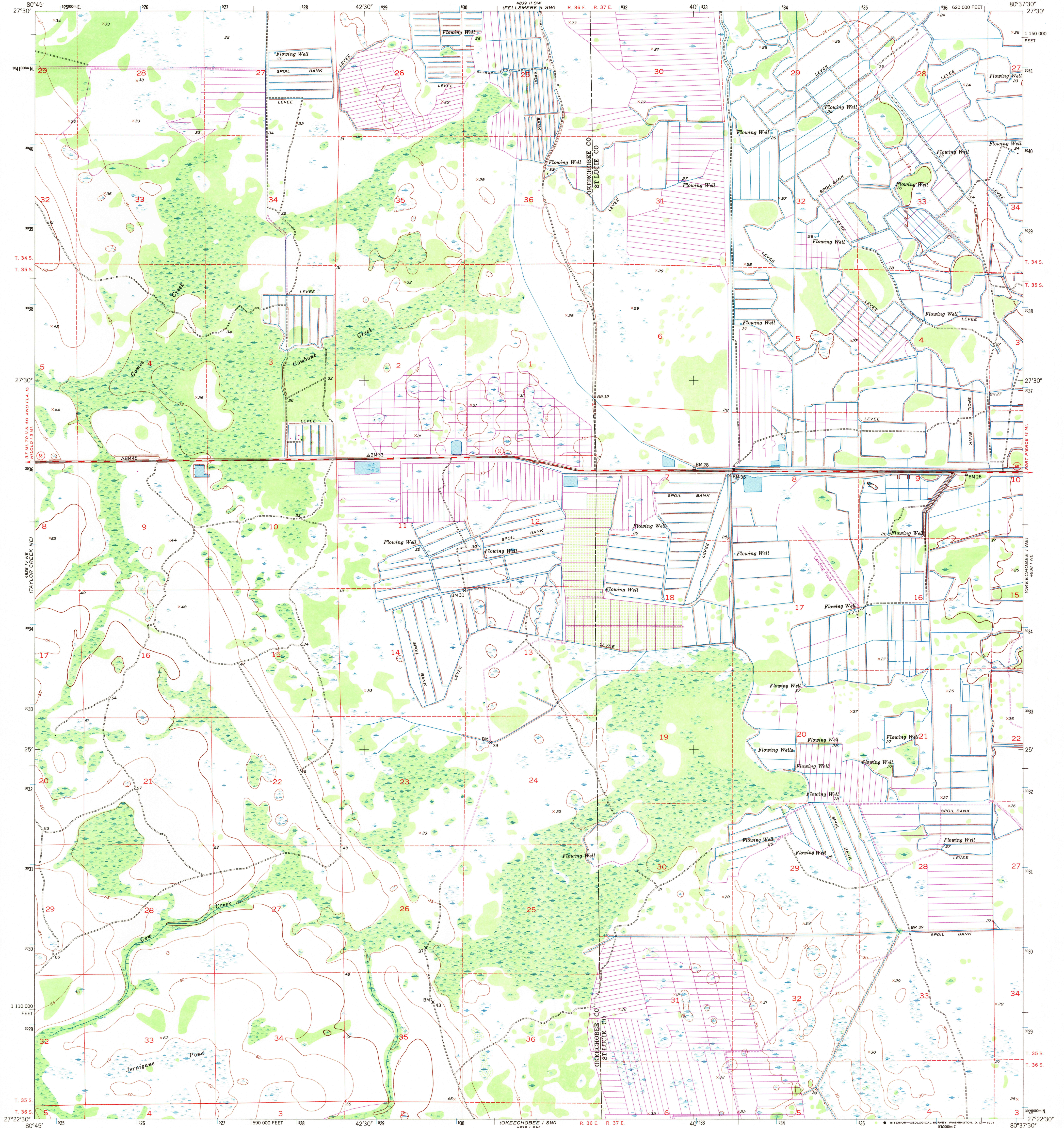
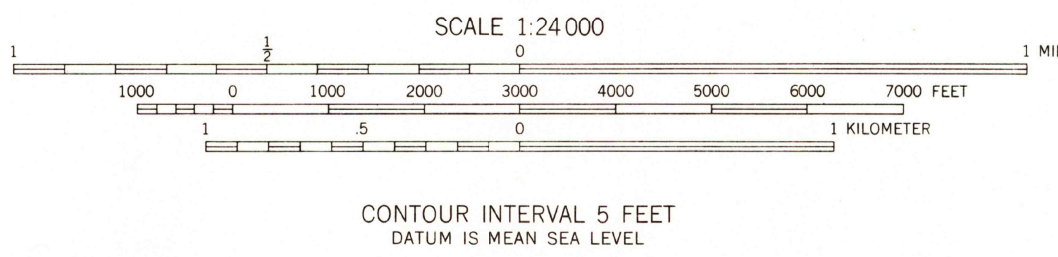
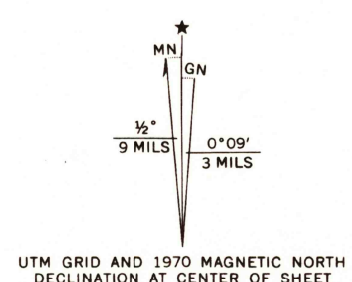


UNITED STATES  
DEPARTMENT OF THE INTERIOR  
GEOLOGICAL SURVEY

OKEECHOBEE 1 NW QUADRANGLE  
FLORIDA  
7.5 MINUTE SERIES (TOPOGRAPHIC)



Maped, edited, and published by the Geological Survey  
Control by USGS and USC&GS  
Culture and drainage in part compiled by  
U. S. Corps of Engineers and Geological Survey  
from aerial photographs taken 1951  
Topography by plane-table surveys 1953  
Polyconic projection. 1927 North American datum  
10,000-foot grid based on Florida coordinate system,  
east zone  
Dashed land lines indicate approximate locations  
1000-meter Universal Transverse Mercator grid ticks,  
zone 17, shown in blue  
Revisions shown in purple compiled from aerial photographs  
taken 1970. This information not field checked



ROAD CLASSIFICATION

Heavy-duty	4 LANE 16 LANE	Light-duty
Medium-duty	4 LANE 16 LANE	Unimproved dirt
U. S. Route		State Route

OKEECHOBEE 1 NW, FLA.  
N2722.5-W8037.5/7.5  
1953  
PHOTOREVISED 1970  
AMS 4838 1 NW-SERIES V847

SEP 16 1971