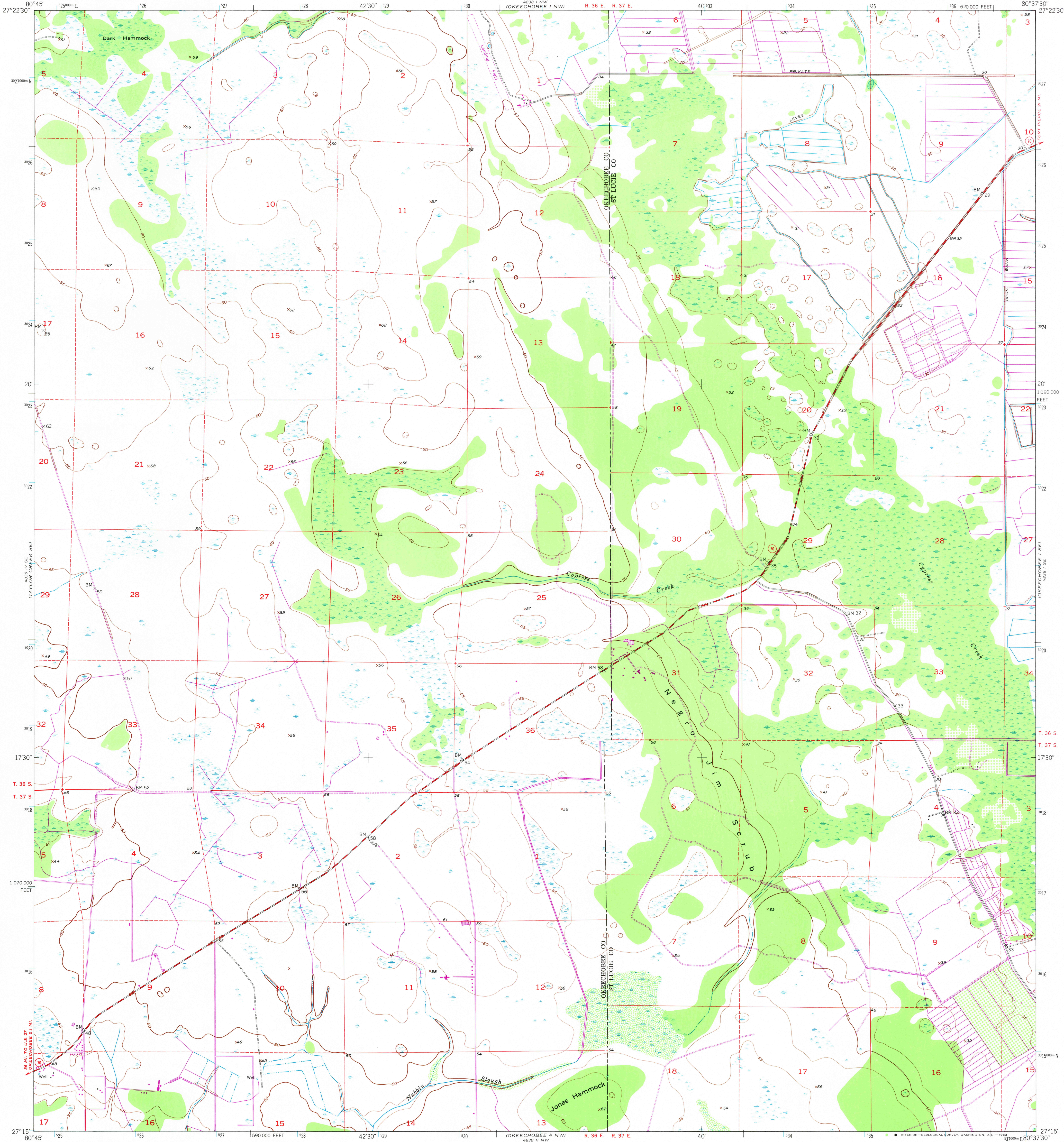


UNITED STATES  
DEPARTMENT OF THE INTERIOR  
GEOLOGICAL SURVEY

OKEECHOBEE 1 SW QUADRANGLE  
FLORIDA  
7.5 MINUTE SERIES (TOPOGRAPHIC)



Maped, edited, and published by the Geological Survey

Control by USGS, USC&GS, and USCE

Culture and drainage in part compiled by  
U. S. Corps of Engineers and Geological Survey  
from aerial photographs taken 1951  
Topography by plane-table surveys 1953

Polycratic projection. 1927 North American datum  
10,000-foot grid based on Florida coordinate system,  
east zone

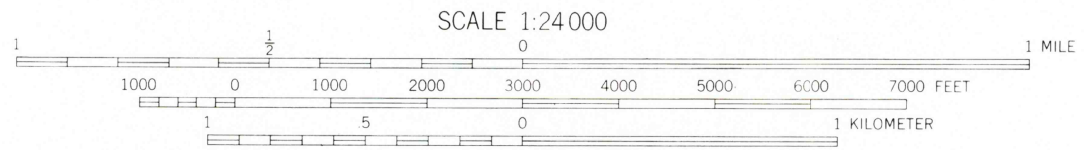
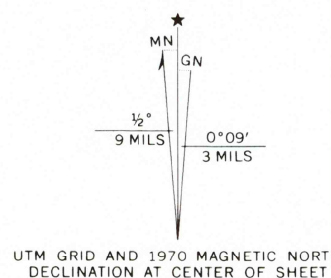
Dashed land lines indicate approximate locations

1000-meter Universal Transverse Mercator grid ticks,  
zone 17, shown in blue

Revisions shown in purple compiled from aerial photographs  
taken 1970. This information not field checked

Map photoinspected 1979

No major culture or drainage changes observed

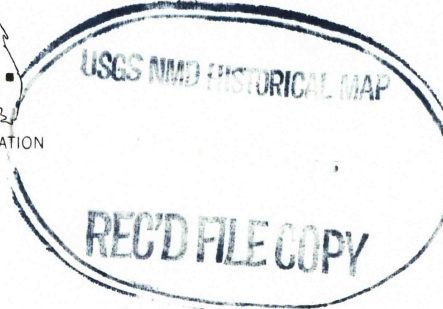


CONTOUR INTERVAL 5 FEET  
DATUM IS MEAN SEA LEVEL

THIS MAP COMPLIES WITH NATIONAL MAP ACCURACY STANDARDS  
FOR SALE BY U. S. GEOLOGICAL SURVEY, WASHINGTON, D. C. 20242  
A FOLDER DESCRIBING TOPOGRAPHIC MAPS AND SYMBOLS IS AVAILABLE ON REQUEST



QUADRANGLE LOCATION



ROAD CLASSIFICATION  
Heavy-duty 4 LANE 16 LANE Light-duty  
Medium-duty 4 LANE 16 LANE Unimproved dirt  
U. S. Route State Route

OKEECHOBEE 1 SW, FLA.

N2715-W8037 5/7.5  
PHOTOINSPECTED 1979  
1953  
PHOTOREVISED 1970  
AMS 4838 1 SW-SERIES V847

MAY 27 1963

2100