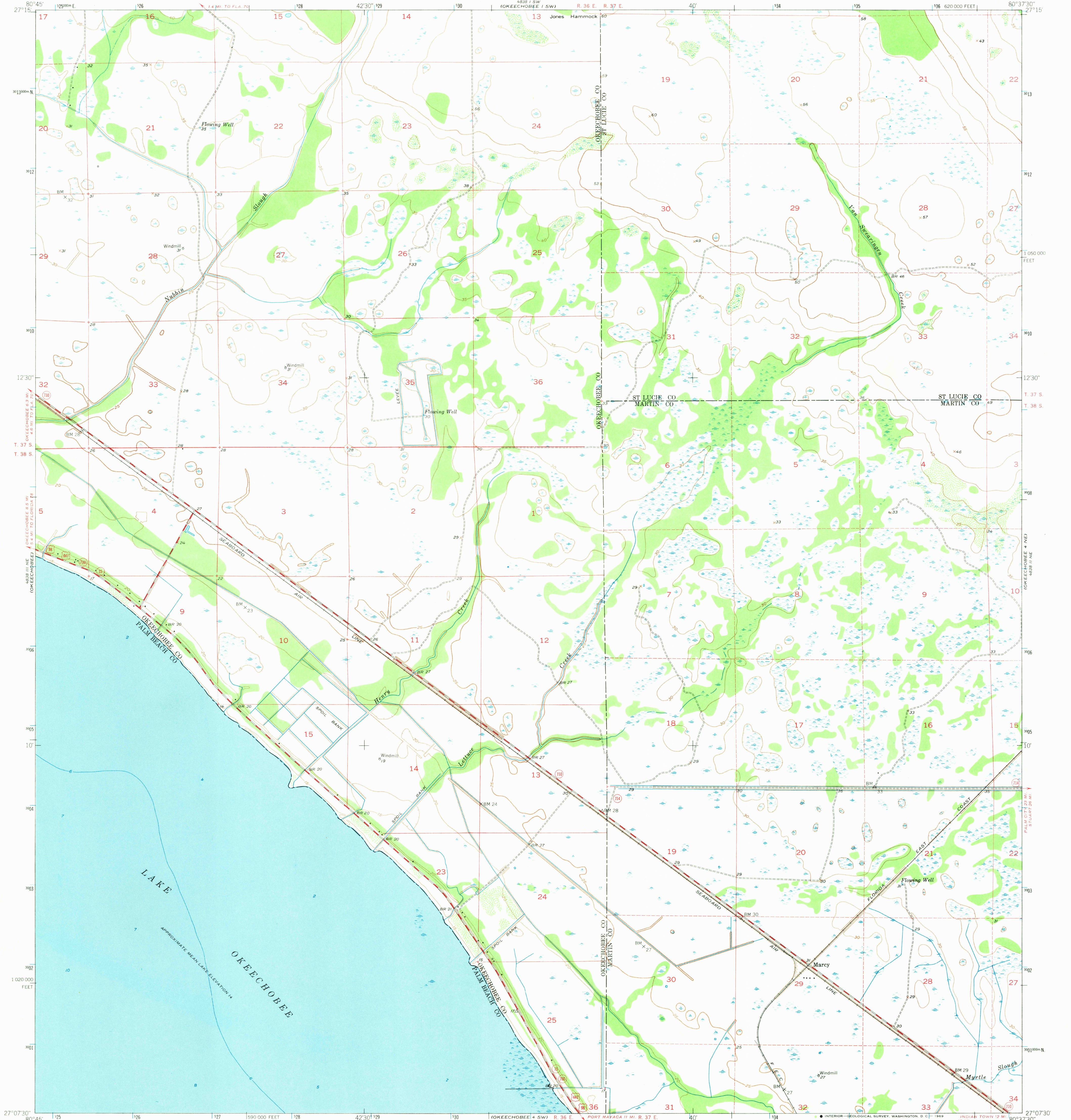


UNITED STATES
DEPARTMENT OF THE INTERIOR
GEOLOGICAL SURVEY

OKEECHOBEE 4 NW QUADRANGLE
FLORIDA
7.5 MINUTE SERIES (TOPOGRAPHIC)



Mapped, edited, and published by the Geological Survey

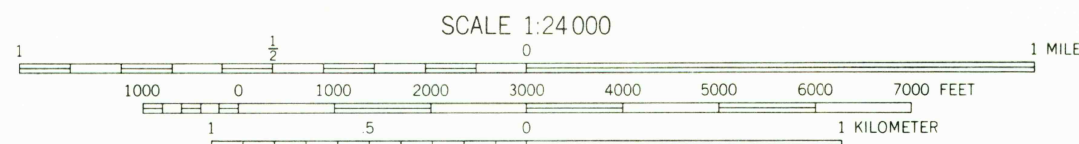
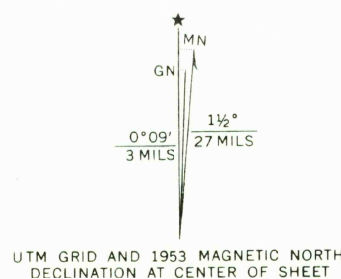
Control by USGS and USC&GS

Culture and drainage in part compiled from aerial photographs taken 1952. Topography by plane-table surveys 1953. Hydrography from USC&GS Chart 1289 (1:80,000).

Polyconic projection. 1927 North American datum. 10,000-foot grid based on Florida coordinate system, east zone.

Dotted land lines were established by private survey. Dashed land lines indicate approximate locations.

1000-meter Universal Transverse Mercator grid ticks zone 17, shown in blue.



CONTOUR INTERVAL 5 FEET
DATUM IS MEAN SEA LEVEL
DEPTH CURVES AND SOUNDINGS IN FEET-DATUM IS 12 1/2 FEET

THIS MAP COMPLIES WITH NATIONAL MAP ACCURACY STANDARDS
FOR SALE BY U.S. GEOLOGICAL SURVEY, WASHINGTON, D.C. 20242
A FOLDER DESCRIBING TOPOGRAPHIC MAPS AND SYMBOLS IS AVAILABLE ON REQUEST

USGS
Historical File
Topographic Division



U.S.G.S.
FILE COPY
TOPOGRAPHIC DIVISION

ROAD CLASSIFICATION
Heavy-duty... 4 LANE 16 LANE Light-duty...
Medium-duty... 4 LANE 16 LANE Unimproved dirt...
U.S. Route... State Route...

OKEECHOBEE 4 NW, FLA.
N2707.5-W8037.5/7.5

1953

AMS 4838 II NW-SERIES V847

MAR 2 1 1989
2045