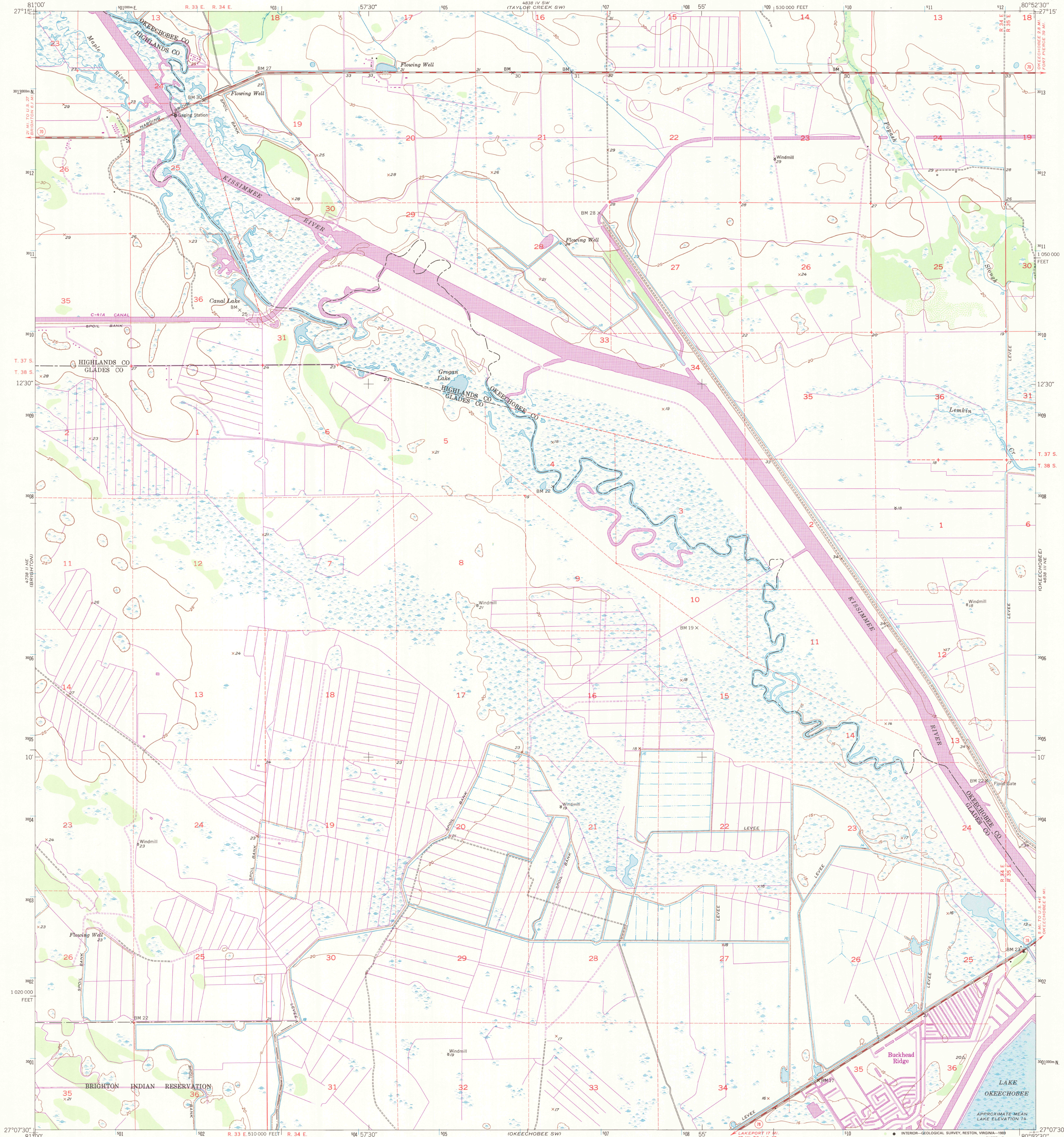


UNITED STATES  
DEPARTMENT OF THE INTERIOR  
GEOLOGICAL SURVEY

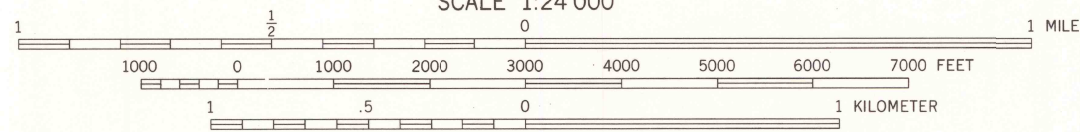
UNITED STATES  
DEPARTMENT OF THE ARMY  
CORPS OF ENGINEERS

OKEECHOBEE NW QUADRANGLE  
FLORIDA  
7.5 MINUTE SERIES (TOPOGRAPHIC)



Mapped by U. S. Corps of Engineers  
Edited and published by the Geological Survey  
Control by USGS, USC&GS, and USCE  
Culture and drainage in part compiled from aerial photographs  
taken 1950. Topography by plane-table surveys 1950-1951  
Field check by the Geological Survey 1952  
Polyconic projection. 1927 North American datum  
10,000-foot grid based on Florida coordinate system,  
east zone  
Dashed land lines indicate approximate locations  
Certain land lines unsurveyed in T. 37 S.-R. 34 E.  
and T. 38 S.-R. 35 E.  
1000-meter Universal Transverse Mercator grid ticks,  
zone 17, shown in blue

UTM GRID AND 1972 MAGNETIC NORTH  
DECLINATION AT CENTER OF SHEET  
Revisions shown in purple compiled by the Geological Survey from  
aerial photographs taken 1972. This information not field checked



CONTOUR INTERVAL 5 FEET  
NATIONAL GEODETIC VERTICAL DATUM OF 1929

THIS MAP COMPLIES WITH NATIONAL MAP ACCURACY STANDARDS  
FOR SALE BY U. S. GEOLOGICAL SURVEY, DENVER, COLORADO 80225  
OR RESTON, VIRGINIA 22092  
A FOLDER DESCRIBING TOPOGRAPHIC MAPS AND SYMBOLS IS AVAILABLE ON REQUEST



QUADRANGLE LOCATION

ROAD CLASSIFICATION  
Heavy-duty ——— 4 LANE, 6 LANE Light-duty ———  
Medium-duty ——— 4 LANE, 6 LANE Unimproved dirt ———  
U. S. Route ——— State Route ———  
U. S. GEOLOGICAL SURVEY  
RESTON, VA  
NOV 06 1989  
OKEECHOBEE NW, FLA.  
27080-B8-TF-024

1952  
PHOTOREVISED 1972  
DMA 4838 III NW—SERIES Y847