

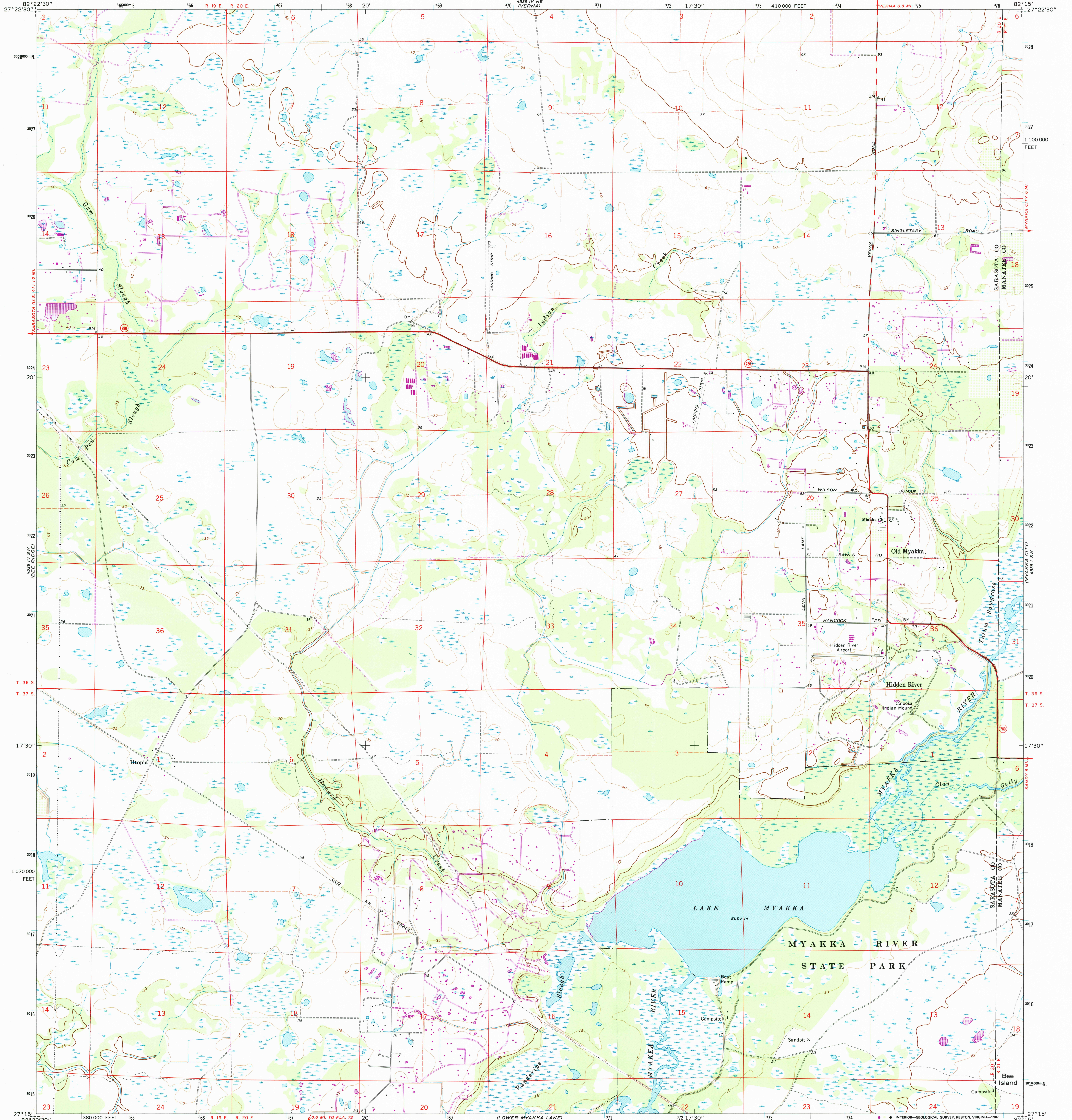
4538 IV NE
LOW-LANE

UNITED STATES
DEPARTMENT OF THE INTERIOR
GEOLOGICAL SURVEY

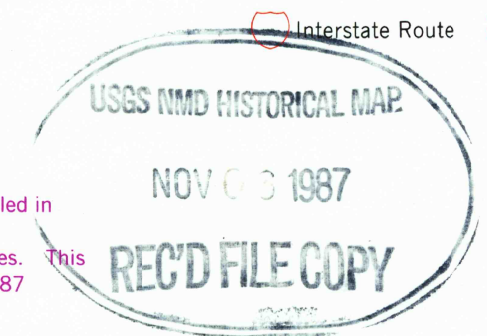
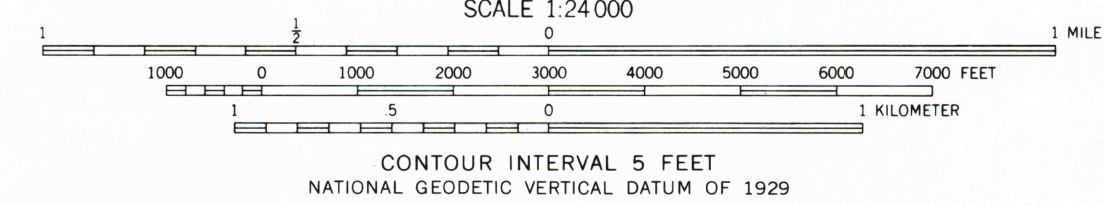
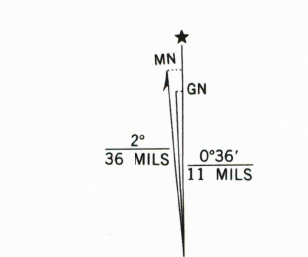
STATE OF FLORIDA

OLD MYAKKA QUADRANGLE
FLORIDA
7.5 MINUTE SERIES (TOPOGRAPHIC)

4538 IV NE
4538 NW NW
MYAKKA CITY



Mapped, edited, and published by the Geological Survey
Control by USGS and USC&GS
Topography by photogrammetric methods from aerial photographs
taken December 1971. Field checked 1973
Supersedes Army Map Service map dated 1944
Projection and 10,000-foot grid ticks: Florida coordinate
system, west zone (transverse Mercator)
1000-meter Universal Transverse Mercator grid ticks,
zone 17, shown in blue 1927 North American datum
To place on the predicted North American Datum 1983
move the projection lines 32 meters south and
17 meters west as shown by dashed corner ticks
Fine red dashed lines indicate selected fence and field lines where
generally visible on aerial photographs. This information is unchecked
There may be private inholdings within the boundaries of
the National or State reservations shown on this map



ROAD CLASSIFICATION

Primary highway, hard surface	Light-duty road, hard or improved surface
Secondary highway, hard surface	Unimproved road
Interstate Route	U. S. Route
	State Route

THIS MAP COMPLIES WITH NATIONAL MAP ACCURACY STANDARDS
FOR SALE BY U. S. GEOLOGICAL SURVEY
DENVER, COLORADO 80226 OR RESTON, VIRGINIA 22092
A FOLDER DESCRIBING TOPOGRAPHIC MAPS AND SYMBOLS IS AVAILABLE ON REQUEST

Revisions shown in purple and woodland compiled in
cooperation with State of Florida agencies from
aerial photographs taken 1984 and other sources. This
information not field checked. Map edited 1987

OLD MYAKKA, FLA.
27082-C3-TF-024
1973
PHOTOREVISED 1987
DMA 4538 IV SE-SERIES V847