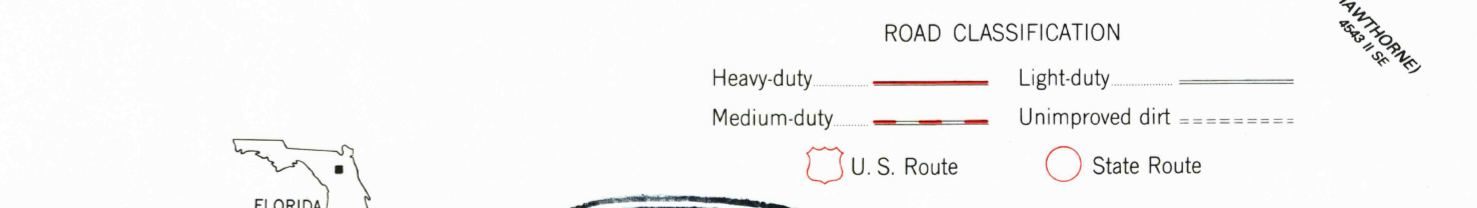
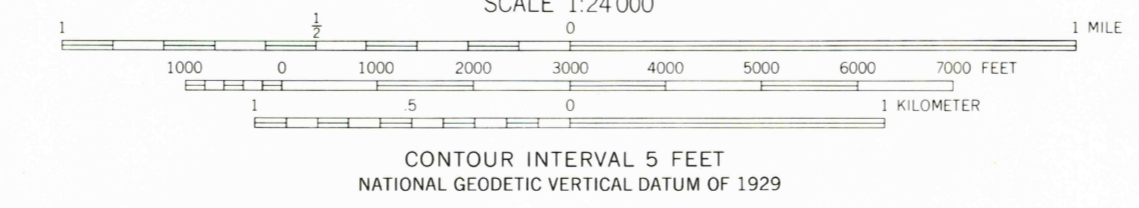
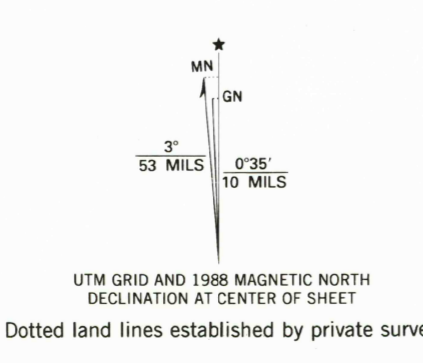


Mapped, edited, and published by the Geological Survey  
Control by USGS, USC&GS, and Florida Geodetic Survey  
Topography by photogrammetric methods from aerial  
photographs taken 1964. Field checked 1966  
Polyconic projection. 1927 North American datum  
10,000-foot grid based on Florida coordinate system, north zone  
1000-meter Universal Transverse Mercator grid ticks,  
zone 17, shown in blue  
To place on the predicted North American Datum 1983,  
move the projection lines 24 meters south and  
16 meters west as shown by dashed corner ticks  
There may be private inholdings within the boundaries of  
the National or State reservations shown on this map  
Fine red dashed lines indicate selected fence and field lines where  
generally visible on aerial photographs. This information is unchecked



THIS MAP COMPLIES WITH NATIONAL MAP ACCURACY STANDARDS  
FOR SALE BY U. S. GEOLOGICAL SURVEY, DENVER, COLORADO 80225, OR RESTON, VIRGINIA 22092  
A FOLDER DESCRIBING TOPOGRAPHIC MAPS AND SYMBOLS IS AVAILABLE ON REQUEST

Revisions shown in purple compiled from aerial photographs  
taken 1984 and other sources. This information not  
field checked. Map edited 1988  
USGS NMD HISTORICAL MAP  
ORANGE HEIGHTS, FLA.  
29082-F2-TF-024  
1966  
PHOTOREVISED 1988  
DMA 4543 II NW-SERIES V847  
DEC 09 1988  
REC'D FILE COPY