

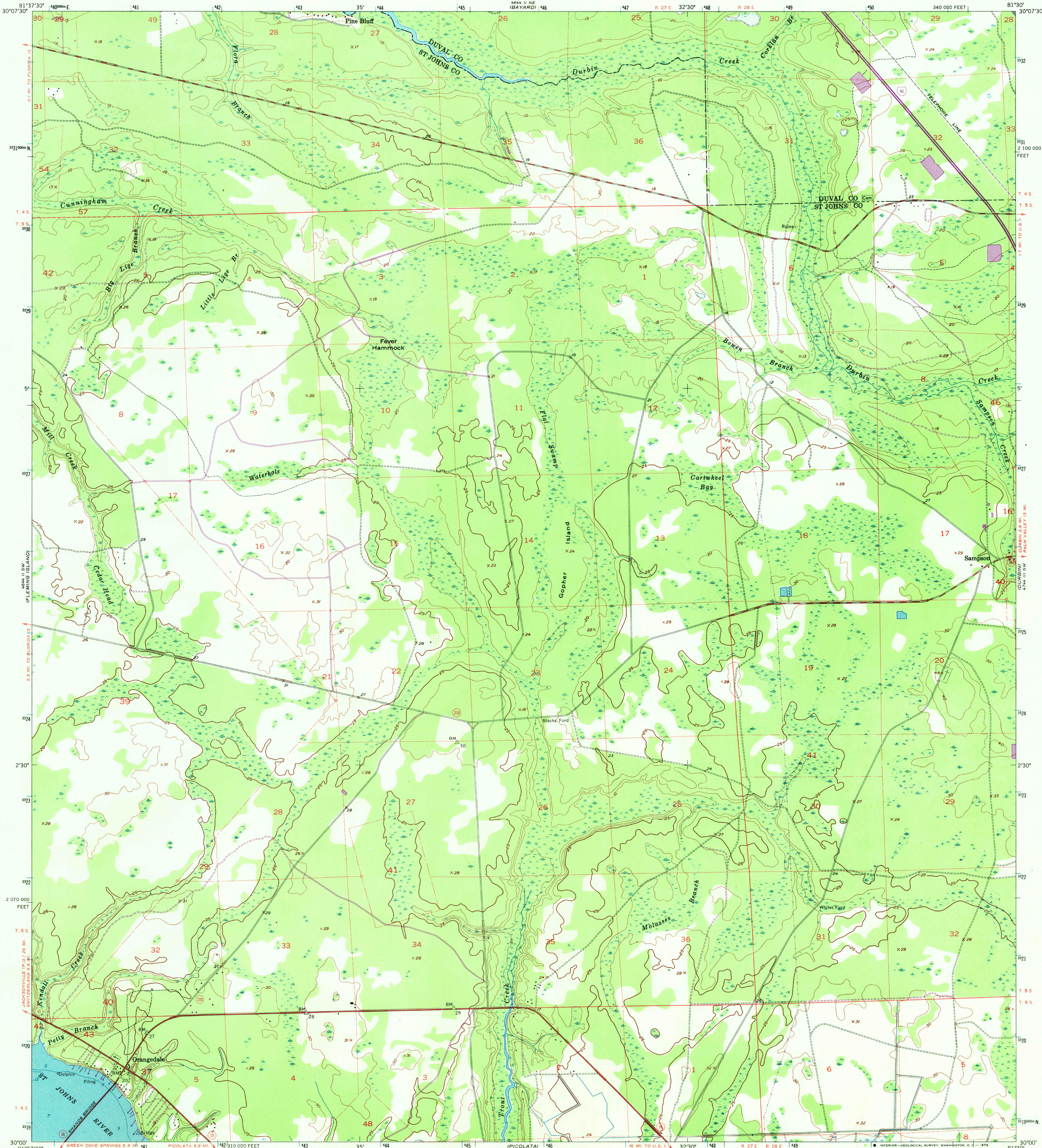
444 11 NW
ORANGE PARK

UNITED STATES
DEPARTMENT OF THE INTERIOR
GEOLOGICAL SURVEY

UNITED STATES
DEPARTMENT OF COMMERCE
COAST AND GEODETIC SURVEY

ORANGEDALE QUADRANGLE
FLORIDA
7.5 MINUTE SERIES (TOPOGRAPHIC)
SE/4 ORANGE PARK 15' QUADRANGLE

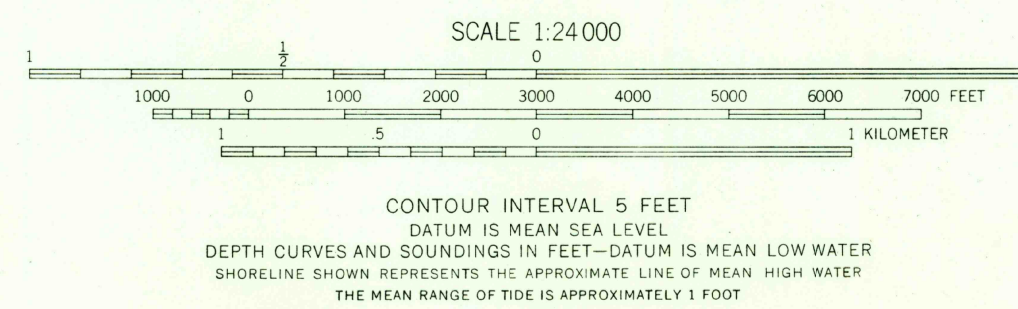
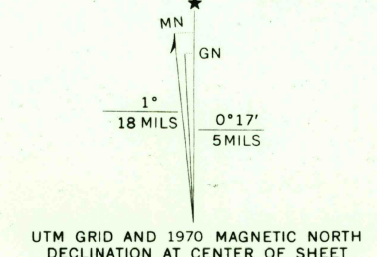
474 11 NW
(PALM VALLEY)



GREEN COVE SPRINGS
444 11 NW

Mapped by U. S. Coast and Geodetic Survey
Edited and published by the Geological Survey
Control by USGS, USC&GS, USCE, and Florida Geodetic Survey
Culture and drainage in part compiled from aerial photographs taken 1949
Topography by planetable surveys 1951. Field check 1952
Hydrography from USC&GS charts surveyed 1935 and 1946-1947
Polyconic projection. 1927 North American datum
10,000-foot grid based on Florida coordinate system,
east zone
Dashed land lines indicate approximate locations
Unchecked elevations are shown in brown
1000-meter Universal Transverse Mercator grid ticks,
zone 17, shown in blue

Revisions shown in purple and recompilation of woodland areas
compiled by the Geological Survey from aerial photographs taken 1970
This information not field checked



ROAD CLASSIFICATION
Heavy-duty 4 LANE 16 LANE Light-duty
Medium-duty 4 LANE 16 LANE Unimproved dirt
Interstate Route U.S. Route State Route

USGS
HISTORICAL FILE
TOPOGRAPHIC DIVISION

ORANGEDALE, FLA.
SE/4 ORANGE PARK 15' QUADRANGLE
N3000-W8130/7.5

1952
PHOTOREVISED 1970
AMS 4644 II SE--SERIES V847

FEB 11 1972

THIS MAP COMPLIES WITH NATIONAL MAP ACCURACY STANDARDS
FOR SALE BY U. S. GEOLOGICAL SURVEY, WASHINGTON, D. C. 20242
A FOLDER DESCRIBING TOPOGRAPHIC MAPS AND SYMBOLS IS AVAILABLE ON REQUEST