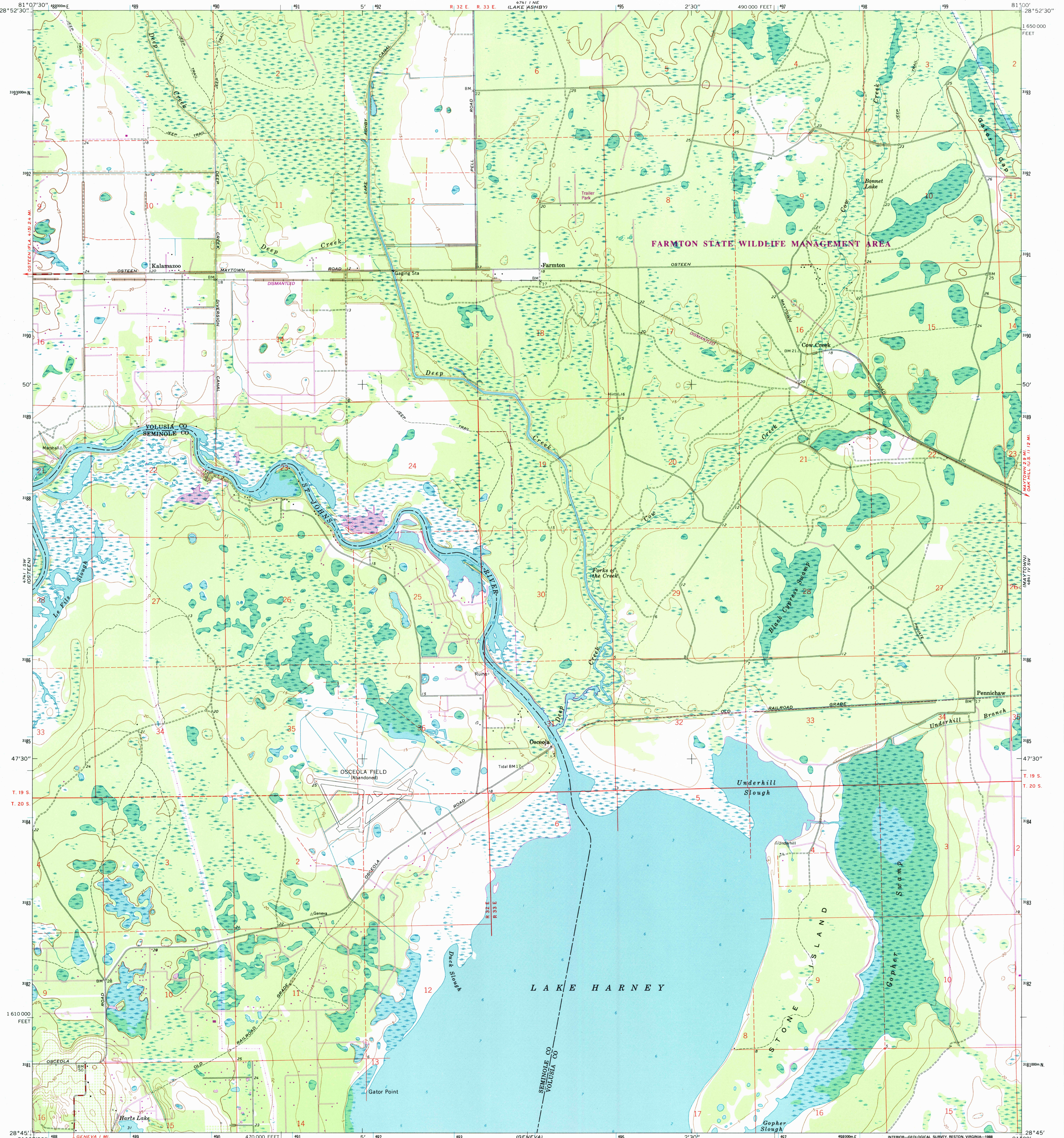


UNITED STATES
DEPARTMENT OF THE INTERIOR
GEOLOGICAL SURVEY

OSCEOLA QUADRANGLE
FLORIDA
7.5 MINUTE SERIES (TOPOGRAPHIC)



Mapped, edited, and published by the Geological Survey
Control by USGS, USC&GS, USOE, and Florida Geodetic Survey
Planimetry by photogrammetric methods from aerial photographs taken 1957. Topography by planetable surveys 1965 and 1966
Selected hydrographic data compiled from USC&GS Chart 688 (1964)
This information is not intended for navigational purposes
Polyconic projection. 1927 North American datum
10,000-foot grid based on Florida coordinate system, east zone
1000-meter Universal Transverse Mercator grid ticks, zone 17, shown in blue
To place on the predicted North American Datum 1983, move the projection lines 26 meters south and 20 meters west as shown by dashed corner ticks
There may be private inholdings within the boundaries of the National or State reservations shown on this map

UTM GRID AND 1988 MAGNETIC NORTH DECLINATION AT CENTER OF SHEET

SCALE 1:24,000

CONTOUR INTERVAL 5 FEET
NATIONAL GEODETIC VERTICAL DATUM OF 1929
DEPTH CURVES AND SOUNDINGS IN FEET—DATUM IS MEAN LOW WATER
SHORELINE SHOWN REPRESENTS THE APPROXIMATE LINE OF MEAN HIGH WATER
THE MEAN RANGE OF TIDE IS LESS THAN 0.5 FOOT

THIS MAP COMPLIES WITH NATIONAL MAP ACCURACY STANDARDS
FOR SALE BY U.S. GEOLOGICAL SURVEY
DENVER, COLORADO 80225, OR RESTON, VIRGINIA 22092
A FOLDER DESCRIBING TOPOGRAPHIC MAPS AND SYMBOLS IS AVAILABLE ON REQUEST

RECEIVED FEB 28 1999
USGS/ND
HISTORICAL MAP ARCHIVES

OSCEOLA, FLA.
28081-G1-TF-024
1966
PHOTO REVISSED 1988
DMA 4741 1 SE-SERIES V947

ROAD CLASSIFICATION
Medium-duty ——— Light-duty ———
Unimproved dirt - - - - -

FLORIDA
QUADRANGLE LOCATION

Revision shown in purple compiled from aerial photographs taken 1984 and other sources. This information not field checked. Map edited 1988

ISBN 0-607-14183-2