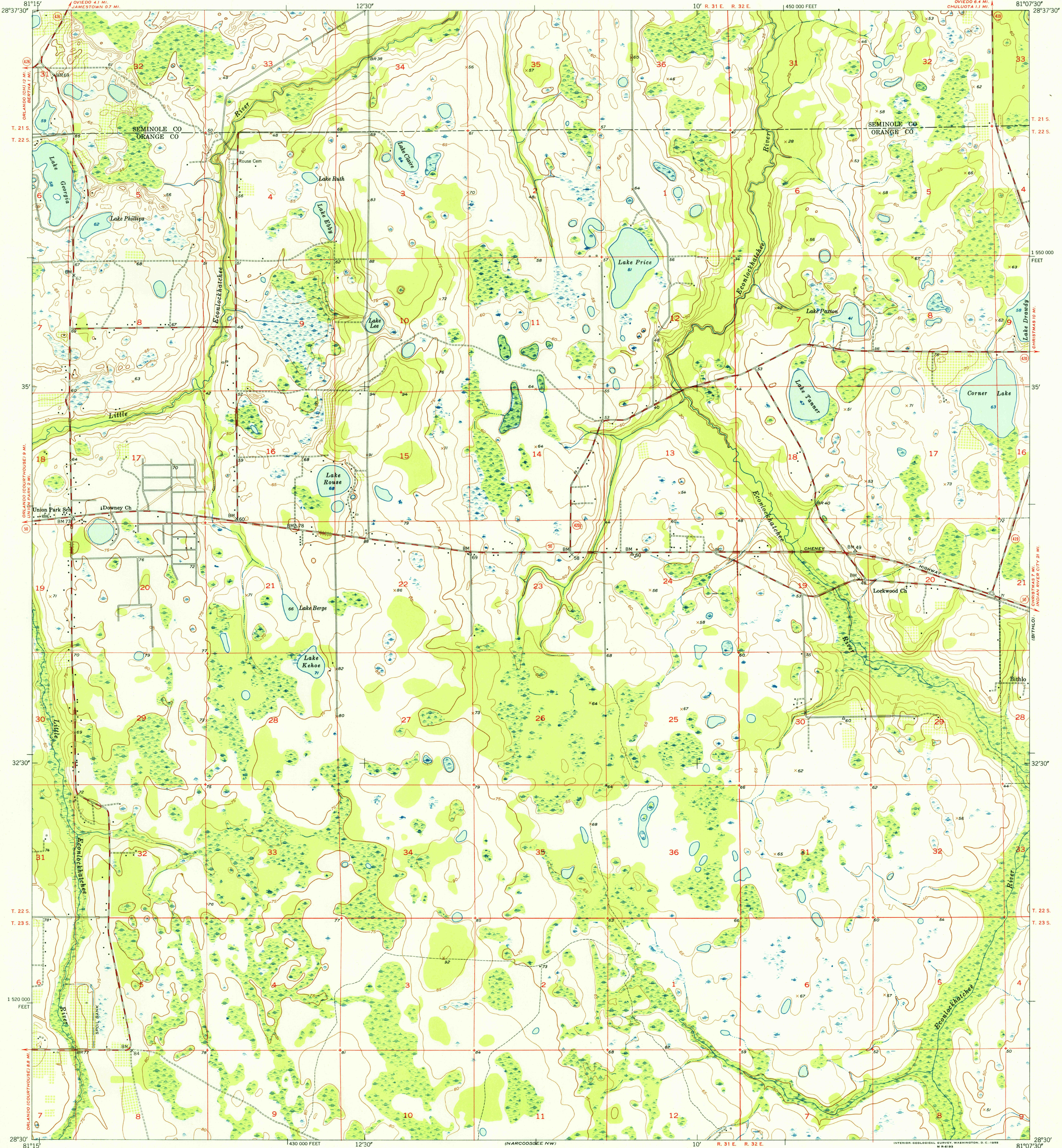


UNITED STATES
DEPARTMENT OF THE INTERIOR
GEOLOGICAL SURVEY

U.S.G.S.
FILE COPY
TOPOGRAPHIC DIVISION

OVIEDO SW QUADRANGLE
FLORIDA
7.5 MINUTE SERIES (TOPOGRAPHIC)
OVIEDO 6.4 MI.
CHULLUOTA 1.1 MI.



Mapped, edited, and published by the Geological Survey

Control by USGS and USCG&S

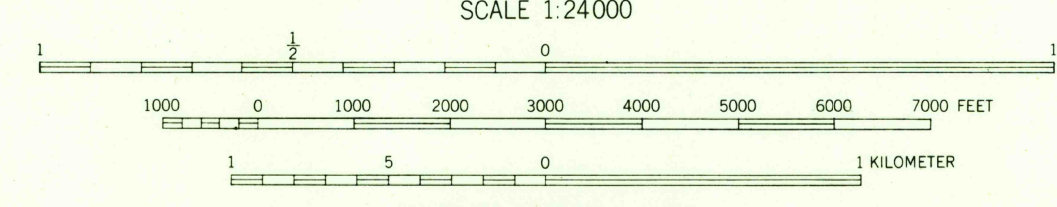
Culture and drainage in part compiled by U. S. Corps of Engineers and Geological Survey from aerial photographs taken 1951

Topography by plane-table surveys 1952-1953

Polycyclic projection. 1927 North American datum

10,000-foot grid based on Florida coordinate system, east zone

TRUE NORTH
MAGNETIC NORTH
APPROXIMATE MEAN DECLINATION, 1953



CONTOUR INTERVAL 5 FEET
DATUM IS MEAN SEA LEVEL



ROAD CLASSIFICATION
Heavy-duty 4 LANE 16 LANE Light-duty
Medium-duty 4 LANE 16 LANE Unimproved dirt
U. S. Route State Route

U.S.G.S.
FILE COPY
TOPOGRAPHIC DIVISION

OVIEDO SW, FLA.
N2830-W8107.5/7.5

1953

APR 1 1955

THIS MAP COMPLIES WITH NATIONAL MAP ACCURACY STANDARDS
FOR SALE BY U. S. GEOLOGICAL SURVEY, WASHINGTON 25, D. C.
A FOLDER DESCRIBING TOPOGRAPHIC MAPS AND SYMBOLS IS AVAILABLE ON REQUEST

2080